



East Smithfield, London, E1W

BUTLER  STAG



Enviably located one bedroom apartment, just moments from Tower Hill underground station, St Katharine Docks and iconic London landmarks such as the Tower of London and Tower Bridge.

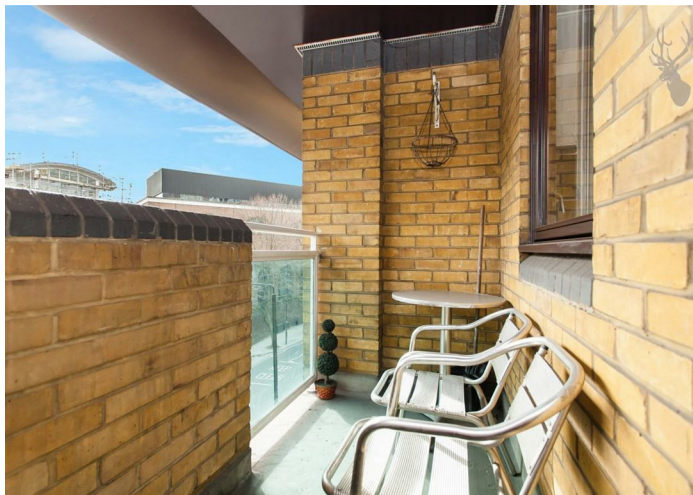


- Smart One Bedroom Apartment
- Tower Hill Location
- Dual-Aspect Reception
- Furnished
- Fourth Floor
- Private Balcony
- St Katharine Docks Moments Away
- Available from 5th December 2025

This smartly presented property is situated on the fourth floor of a well-maintained development and is ideally suited to a city professional or couple seeking a home in a historic pocket of London.

Comprising of a spacious dual-aspect living room with direct access to a private balcony, a separate kitchen, generous double bedroom and contemporary shower room, this excellent apartment is offered furnished from the 5th December.

EPC Rating C
Council Tax Band C

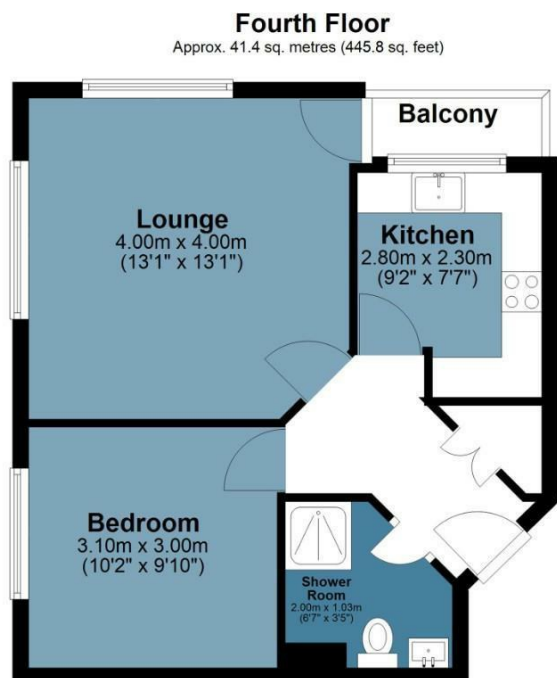




East Smithfield

Approx. Gross Internal Area 41.4 Sq M (445.8 Sq Ft)

BUTLER & STAG



Measurements are approximate and for illustration purposes only. While we do not doubt the accuracy and completeness, we advise you conduct a careful independent assessment of the property to determine monetary value.
© @modephoto.uk www.modephoto.co.uk

IMPORTANT NOTICE - These particulars have been prepared in good faith and they are not intended to constitute part of an offer or contract. We have not performed a structural survey on this property and the services, appliances and specific fittings have not been tested. All photographs, measurements, floor plans and distances referred to are given as a guide and should not be relied upon.

BUTLER & STAG

☎ 020 8102 1236

🏠 508 Roman Road, Bow, London, E3 5LU

✉ bow@butlerandstag.com

www.butlerandstag.uk