



Devas Street, London, E3

BUTLER  STAG



Guide Price £385,000 - £400,000
Welcome to Brimsdown House, a charming residence located on Devas Street in the vibrant city of London. This property boasts an impressive 925 square feet of living space, making it an ideal home for families or those seeking extra room, whether it be to work from home or investment purposes.



Leasehold

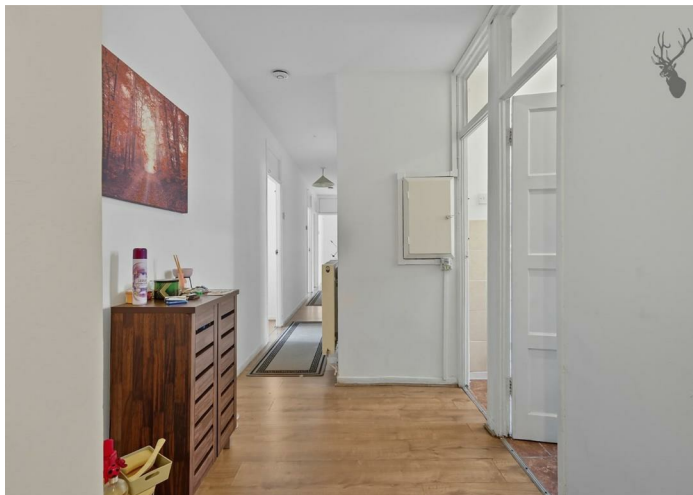
- Four Generous Sized Bedrooms
- Bright And Spacious Reception Room
- Bromley By Bow Tube Station A Moments Walk Away
- Fantastic Position For Schools
- Spanning Across 925 Sq Ft
- Resident On-Street Parking Available
- Great Buy-To-Let Investment
- Well Connected

Situated on the third floor is this four bedroom apartment just of Devas Street. As you enter, you are greeted by a spacious reception room that offers a warm and inviting atmosphere, perfect for entertaining guests or enjoying quiet evenings in. The house features four well-proportioned bedrooms, providing ample space for rest and relaxation. Each bedroom is designed to maximise comfort and privacy, ensuring that everyone in the household has their own sanctuary.

Brimsdown House itself boasts contemporary architecture and offers residents access to a range of amenities, including a communal garden areas, perfect for outdoor relaxation.

Transport links are excellent, with Bromley By Bow and Devon's Road stations nearby, offering swift connections to central London and beyond.

Whether you're looking for a convenient commute or a family seeking an urban lifestyle, this 925 Sq/ft apartment in Brimsdown House presents an excellent opportunity to enjoy all that Bow E3 has to offer.

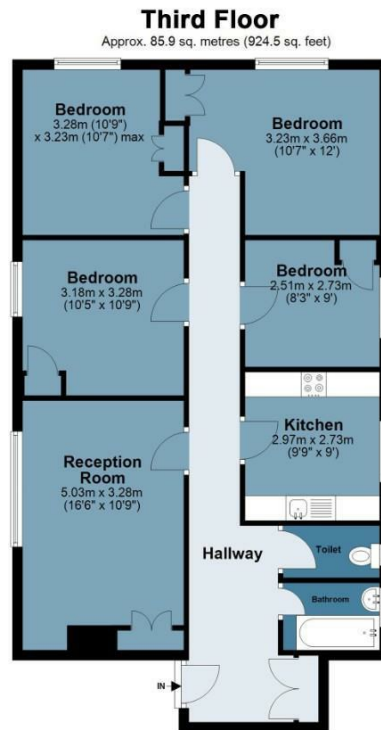




Devas Street

Approx. Gross Internal Area 85.9 Sq M (924.5 Sq Ft)

BUTLER & STAG



Measurements are approximate and for illustration purposes only. While we do not doubt the accuracy and completeness, we advise you conduct a careful independent assessment of the property to determine monetary value.
© @modephoto.uk www.modephoto.co.uk

IMPORTANT NOTICE - These particulars have been prepared in good faith and they are not intended to constitute part of an offer or contract. We have not performed a structural survey on this property and the services, appliances and specific fittings have not been tested. All photographs, measurements, floor plans and distances referred to are given as a guide and should not be relied upon.

BUTLER & STAG

☎ 020 8102 1236

🏠 508 Roman Road, Bow, London, E3 5LU

✉ bow@butlerandstag.com

www.butlerandstag.uk