



Athelstane Grove, London, E3

BUTLER & STAG





# Unique two bedroom mews house set behind private gates on a tree-lined residential road in the heart of popular Bow.



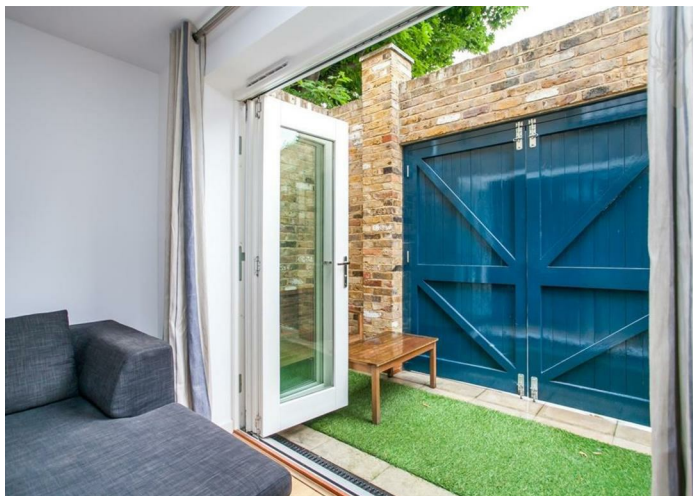
- Two Bedroom Gated Mews House
- Private Front and Rear Patio Areas
- Open-Plan Kitchen/Living Space
- Part Furnished
- Quiet Tree-Lined Residential Road
- Two Bathrooms
- Close to Roman Road and Victoria Park
- Available from 29th November 2025

This delightful house is located just moments from the historic Roman Road, the wonderful Victoria Park and is only a short distance from Mile End underground station. The pretty Selwyn Green provides a quiet green space at the end of the cul-de-sac.

Featuring an open-plan living space which opens out both front and back to private patio areas, the modern fitted kitchen, one double bedroom, a shower room and a utility room make up the ground floor accommodation. The spacious master bedroom with fitted wardrobes and an en-suite bathroom can be found on the first floor.

Perfectly suited to a professional couple seeking something a bit different in a trendy and well-connected pocket of East London, this property is offered part furnished and is available from 29th November 2025.

EPC Rating C  
Council Tax Band D



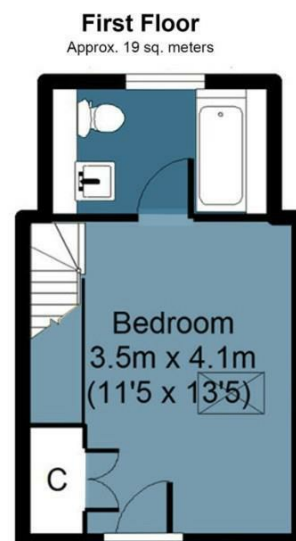
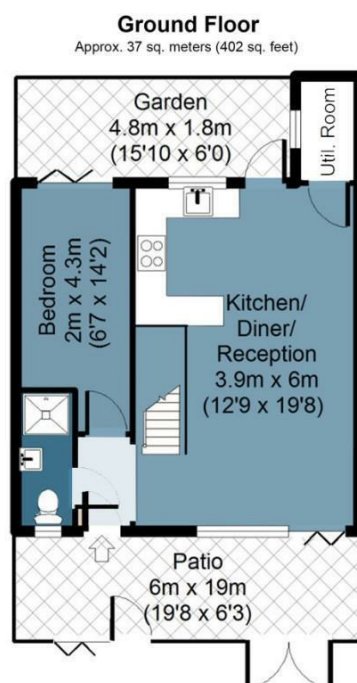




## Athelstane Grove

Approx. Gross Internal Area 56 Sq M ( 609 Sq Ft)

BUTLER & STAG



Measurements are approximate and for illustration purposes only. While we do not doubt the accuracy and completeness, we advise you conduct a careful independent assessment of the property to determine monetary value.  
© @modephotouk www.modephoto.co.uk

IMPORTANT NOTICE - These particulars have been prepared in good faith and they are not intended to constitute part of an offer or contract. We have not performed a structural survey on this property and the services, appliances and specific fittings have not been tested. All photographs, measurements, floor plans and distances referred to are given as a guide and should not be relied upon.

BUTLER & STAG

☎ 020 8102 1236

🏠 508 Roman Road, Bow, London, E3 5LU

✉ bow@butlerandstag.com

[www.butlerandstag.uk](http://www.butlerandstag.uk)