



Regent Square, London, E3

BUTLER & STAG



**Guide Price £300,000 -
£350,000**

**Located in the sought-after
Regent Square
development, this first-floor
one bedroom apartment
offers modern living in a
desirable residential setting.**



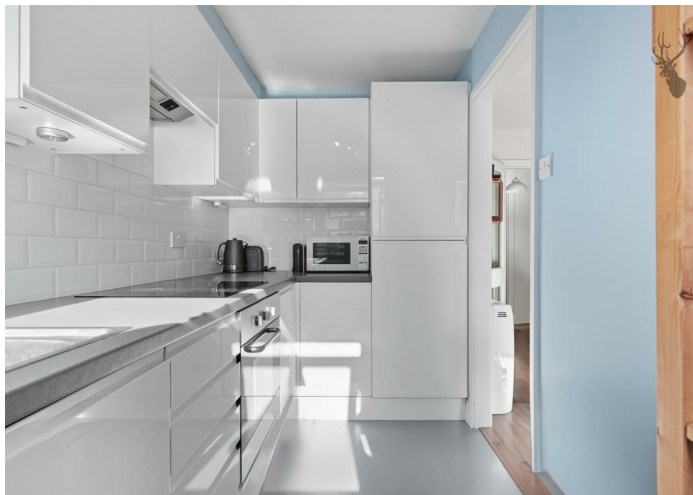
Leasehold

- First Floor Apartment
- Separate Garage
- Secure Gated Development
- Bromley By Bow Tube Station
Close By
- One Bedroom
- 972 Year Lease Length
- Chain Free
- Resident Parking

The property comprises a bright and well-proportioned reception room, a fitted kitchen, double bedroom and bathroom. Presented in good condition throughout, it provides a comfortable home ideal for first-time buyers, professionals or as an investment opportunity.

Further benefits include a private garage – a rare addition in this area – and access to the neatly maintained communal grounds of Regent Square.

Conveniently positioned within easy reach of Bow Road and Mile End stations, the apartment enjoys excellent transport links across London, as well as nearby amenities, parks, and vibrant local cafés.





Regent Square Bow

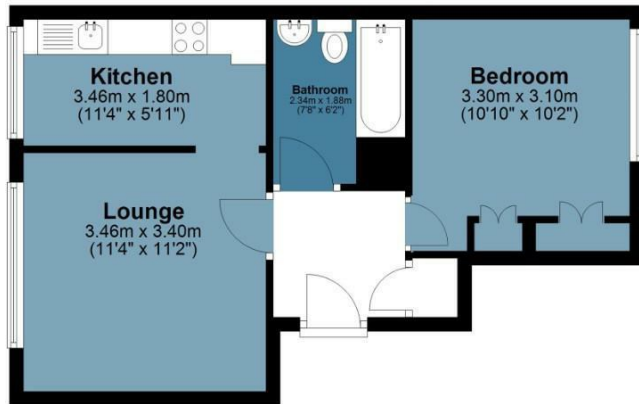
Approx. Gross Internal Area 50.2 Sq M (540.2 Sq Ft)

BUTLER & STAG



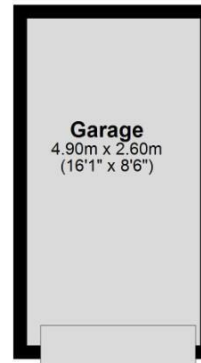
First Floor

Approx. 37.4 sq. metres (403.0 sq. feet)



Outbuilding

Approx. 12.7 sq. metres (137.1 sq. feet)



Measurements are approximate and for illustration purposes only. While we do not doubt the accuracy and completeness, we advise you conduct a careful independent assessment of the property to determine monetary value.
© @modephoto.uk www.modephoto.co.uk

BUTLER & STAG

☎ 020 8102 1236

🏠 508 Roman Road, Bow, London, E3 5LU

✉ bow@butlerandstag.com

www.butlerandstag.uk

IMPORTANT NOTICE - These particulars have been prepared in good faith and they are not intended to constitute part of an offer or contract. We have not performed a structural survey on this property and the services, appliances and specific fittings have not been tested. All photographs, measurements, floor plans and distances referred to are given as a guide and should not be relied upon.