



Menotti Street, London, E2

BUTLER  STAG



Nestled in a well-maintained purpose-built apartment block, this delightful two-bedroom home offers a peaceful retreat with stunning views across the leafy green expanse of Weavers Fields Park.



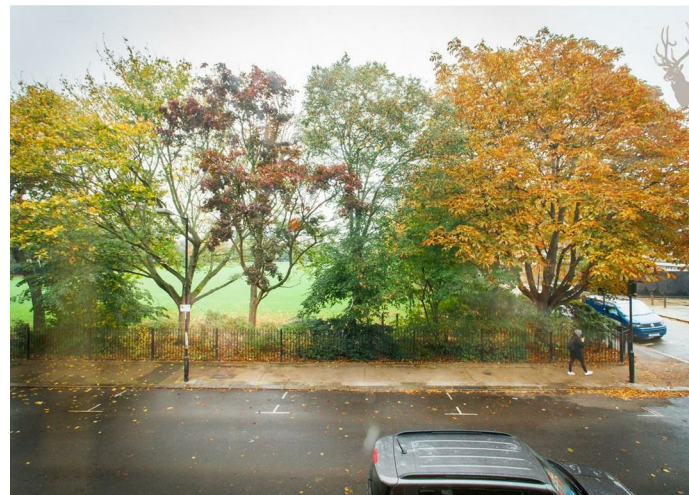
Leasehold

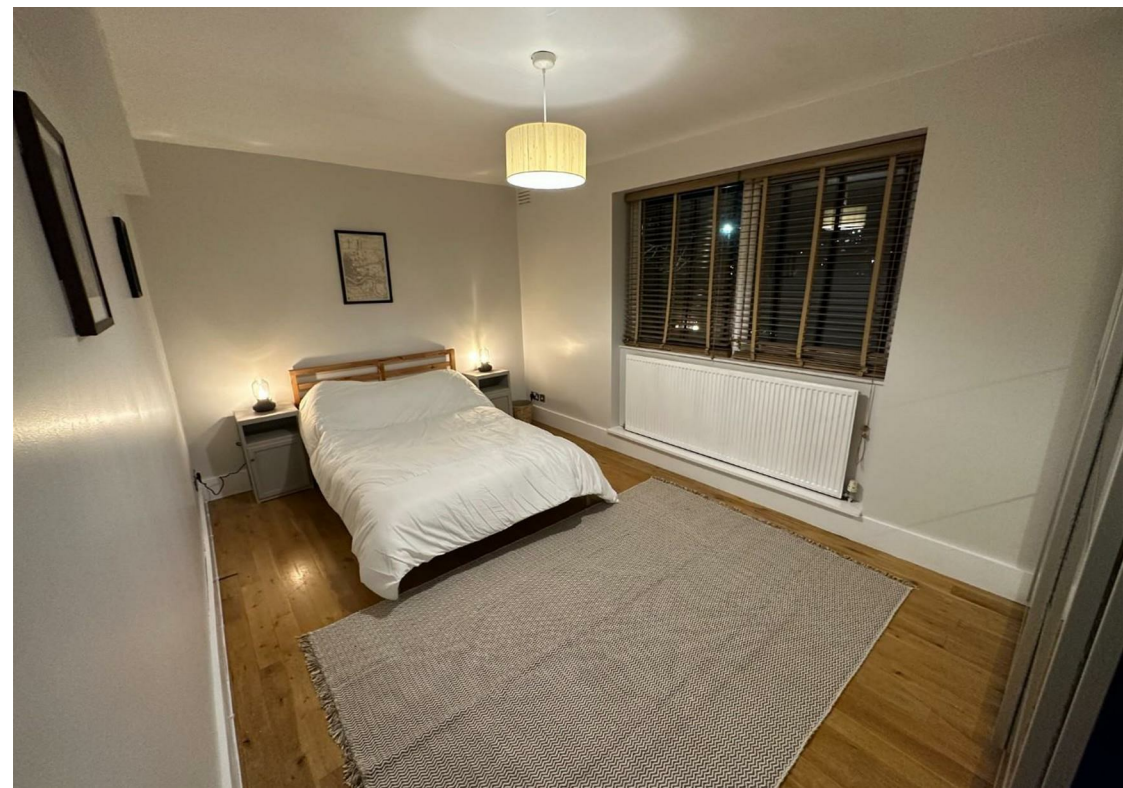
- First Floor Apartment
- Recently Extended Lease (215 Years)
- Chain Free
- Iconic Brick Lane and Shoreditch Close By
- Leafy Views Of Weavers Field Park
- Two Bedrooms
- Benthall Green Over Ground Station close by
- Ideal First Time Purchase or Buy To Let Investment

Evenly proportioned throughout, the apartment features a living area filled with natural light, a separate modern kitchen, two bedrooms, and a contemporary bathroom suite. Large windows frame tranquil parkland views, creating a calming backdrop to everyday living.

Situated on a quiet residential street yet moments from the vibrancy of Bethnal Green, Shoreditch, and Brick Lane, this property offers the best of both worlds—serene surroundings with excellent access to East London's cultural, dining, and transport hubs.

Ideal for first-time buyers, young professionals, or investors, this apartment presents a rare opportunity to live alongside one of East London's most cherished green spaces.

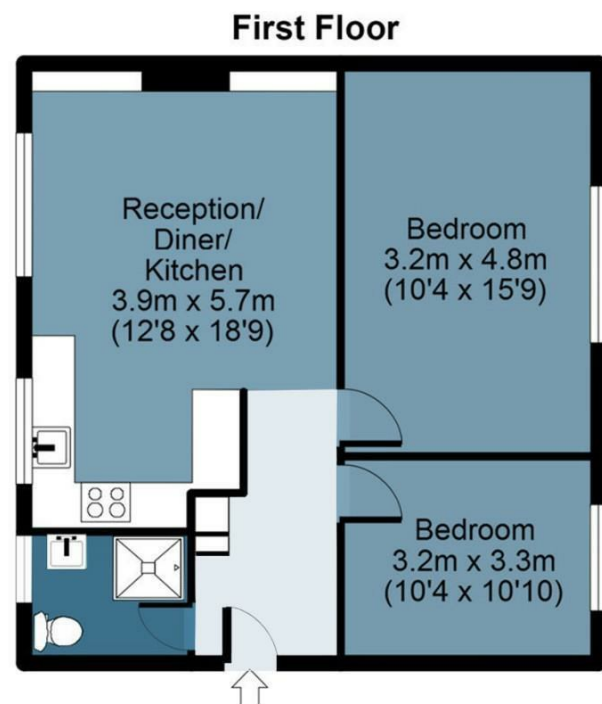




Menotti Street

Approx. Gross Internal Area 52 Sq M (560 Sq Ft)

BUTLER & STAG



Measurements are approximate and for illustration purposes only. While we do not doubt the accuracy and completeness, we advise you conduct a careful independent assessment of the property to determine monetary value.
© @modephoto.uk www.modephoto.co.uk

IMPORTANT NOTICE - These particulars have been prepared in good faith and they are not intended to constitute part of an offer or contract. We have not performed a structural survey on this property and the services, appliances and specific fittings have not been tested. All photographs, measurements, floor plans and distances referred to are given as a guide and should not be relied upon.

BUTLER & STAG

☎ 020 8102 1236

🏠 508 Roman Road, Bow, London, E3 5LU

✉ bow@butlerandstag.com

www.butlerandstag.uk