



Navigators Walk, London, E3

BUTLER  STAG





**Guide Price £425,000 - £450,000**  
**Located in the heart of vibrant Fish Island, this larger-than-average, stylish one-bedroom apartment is set on the first floor of the sought-after Lorimer House development. With a contemporary design and premium finish throughout, this impressive home combines modern comfort with an enviable riverside location along the banks of the River Lea.**



## Leasehold

- Larger Than Average One Bedroom Apartment (598 Sq/Ft)
- First Floor
- Waterside Development
- Stylish Interiors
- Lift Access To All Levels
- EWS1 Compliant
- Fitted Wardrobes / Floor To Ceiling Wardrobes
- High Specification Bathroom

The apartment features a generous open-plan living and dining area, flooded with natural light through floor-to-ceiling windows, and seamlessly connected to a sleek, fully integrated kitchen. The spacious double bedroom includes built-in wardrobes and ample room for a home workspace. A modern, high-spec bathroom and additional storage complete the interior.

Residents of Lorimer House benefit from secure entry, lift access, and lush landscaped garden areas. Just moments from the creative energy of Hackney Wick and a short walk to the green spaces of Victoria Park and the Olympic Park, this property offers the perfect balance of tranquility and city living. Excellent transport links, including nearby Hackney Wick Overground and Stratford stations, ensure easy access across London.

Whether you're a first-time buyer, a professional seeking a stylish city base, or an investor, this unique apartment offers an exceptional opportunity in one of East London's most exciting neighbourhoods.





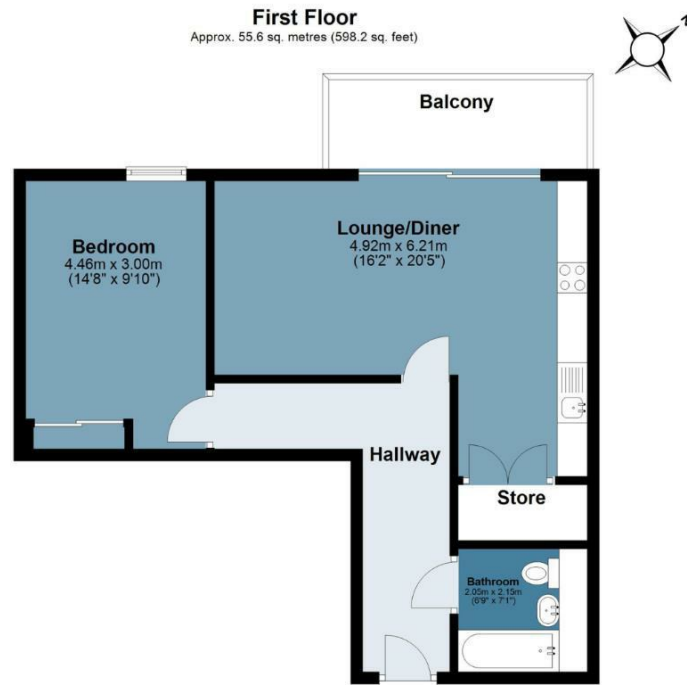




## Navigators Walk

Approx. Gross Internal Area 55.6 sq. metres (598.2 sq. feet)

BUTLER & STAG



Measurements are approximate and for illustration purposes only. While we do not doubt the accuracy and completeness, we advise you conduct a careful independent assessment of the property to determine monetary value  
© @modephoto.uk www.modephoto.co.uk

IMPORTANT NOTICE - These particulars have been prepared in good faith and they are not intended to constitute part of an offer or contract. We have not performed a structural survey on this property and the services, appliances and specific fittings have not been tested. All photographs, measurements, floor plans and distances referred to are given as a guide and should not be relied upon.

BUTLER & STAG

☎ 020 8102 1236

🏠 508 Roman Road, Bow, London, E3 5LU

✉ bow@butlerandstag.com

[www.butlerandstag.uk](http://www.butlerandstag.uk)