



Sidney Street, London, E1

BUTLER  STAG





**Guide Price £400,000 - £425,000**  
**Situated in the well-maintained Wexford House, Whitechapel, this bright and spacious three-bedroom apartment presents a fantastic buy-to-let opportunity in the heart of Whitechapel, one of East London's most dynamic and rapidly developing areas.**



## Leasehold

- Three Bedrooms
- Private Balcony
- Separate Kitchen
- Whitechapel Tube Station Close By
- Resident Parking Available
- 900 Sq/Ft Internal Living Space
- Great Buy To Let Option
- Chain Free
- Lift Access to All Levels

The property features a generous layout with three well-proportioned bedrooms, a large living and dining area, a separate kitchen, and a private balcony offering welcome outdoor space. Ideal for sharers or families, the apartment benefits from good natural light and functional interiors, with scope for cosmetic updates to further enhance rental yield.

Located just moments from Whitechapel Station (Crossrail, District, Hammersmith & City, and Overground lines), the property offers unbeatable connectivity across London. The vibrant local area includes an array of shops, cafes, and restaurants, as well as proximity to the Royal London Hospital, Queen Mary University, and the City.

With strong rental demand, excellent transport links, and future growth potential, this is a smart investment opportunity not to be missed.



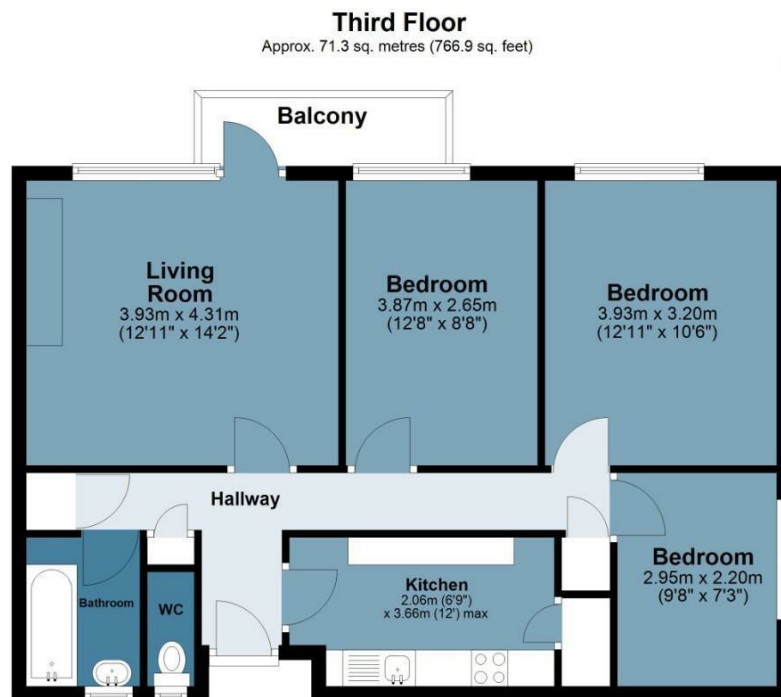




## Wexford House

Approx. Gross Internal 71.3 Area Sq M ( 766.9 Sq Ft )

BUTLER & STAG



Measurements are approximate and for illustration purposes only. While we do not doubt the accuracy and completeness, we advise you conduct a careful independent assessment of the property to determine monetary value.  
© @modephoto.uk www.modephoto.co.uk

IMPORTANT NOTICE - These particulars have been prepared in good faith and they are not intended to constitute part of an offer or contract. We have not performed a structural survey on this property and the services, appliances and specific fittings have not been tested. All photographs, measurements, floor plans and distances referred to are given as a guide and should not be relied upon.

BUTLER & STAG

☎ 020 8102 1236

🏠 508 Roman Road, Bow, London, E3 5LU

✉ bow@butlerandstag.com

[www.butlerandstag.uk](http://www.butlerandstag.uk)