



Nursery Lane, London, E2

BUTLER & STAG



An opportunity to own a bright and modern 2-bedroom apartment in the sought-after Amber Wharf development, located directly on the Regent's Canal in the heart of Haggerston. Spanning 681 Sq/Ft, this stylish home offers a perfect blend of water views, contemporary design and city convenience.



Leasehold

- Canal Side Complex
- Private Balcony With Serene Waterside Views
- Allocated Parking Space
- Two Bedrooms
- Second Floor Apartment
- Separate Kitchen / Diner
- Chain Free
- Haggerston Overground Station A Moments Walk Away

Situated on a peaceful stretch of the serene Regents canal, the apartment features a spacious living and dining area with French doors leading to a private balcony that offers picturesque water views. The separate kitchen offers space for an additional eating area and boasts plenty of counter top space for meal preparation, ideal for both entertaining and everyday living.

The property offers two well-proportioned bedrooms, with ample storage and large windows, as well as a modern bathroom with high-quality fittings. Additional highlights include secure entry, allocated parking and bicycle storage.

Amber Wharf is a secure, gated development ideally positioned just moments from Haggerston Overground Station, with easy access to Shoreditch, Dalston, and the City, this apartment offers a tranquil retreat with vibrant urban life on your doorstep.

Whether you're a first-time buyer or professional couple this canal-side gem offers an exceptional lifestyle opportunity in one of East London's most dynamic neighbourhoods.

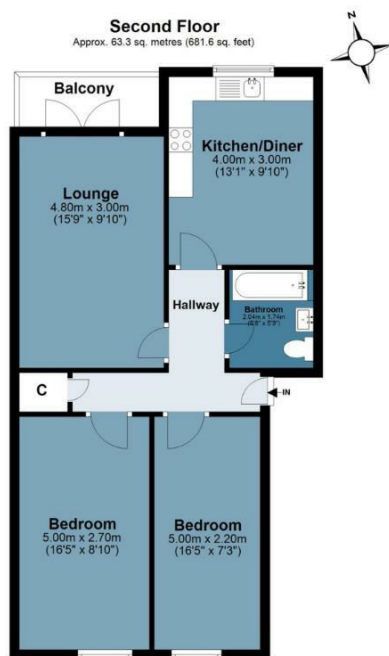




Amber Wharf

Approx. Gross Internal Area 63.3 sq. metres (681.6 sq. feet)

BUTLER & STAG



Measurements are approximate and for illustration purposes only. While we do not doubt the accuracy and completeness, we advise you conduct a careful independent assessment of the property to determine monetary value
© @modephotouk www.modephoto.co.uk

IMPORTANT NOTICE - These particulars have been prepared in good faith and they are not intended to constitute part of an offer or contract. We have not performed a structural survey on this property and the services, appliances and specific fittings have not been tested. All photographs, measurements, floor plans and distances referred to are given as a guide and should not be relied upon.

BUTLER & STAG

☎ 020 8102 1236

🏠 508 Roman Road, Bow, London, E3 5LU

✉ bow@butlerandstag.com

www.butlerandstag.uk