



Chestnut Avenue, London, E7

BUTLER & STAG





**Guide Price £550,000 - £585,000**  
**Nestled away in a private, gated development off a quiet one-way street, this three-bedroom contemporary mews house offers the perfect blend of modern living and tranquillity, all while being just moments from Wanstead Park Station.**



## Freehold

- Two Storey (Freehold) House Set Within A Gated Development
- Open Plan Concept Living Area
- Front Garden and Patio Area
- 976 Sq/Ft Internal Living Space
- Three Double Bedrooms
- Gated Parking
- First Floor Bathroom
- Down Stairs Toilet

Designed with style and functionality in mind, the property boasts a bright and spacious open-plan living area, featuring sleek finishes and high-quality fittings throughout. The modern kitchen is equipped with premium appliances, ample work surfaces and storage, ideal for both casual dining and entertaining.

The three well-proportioned bedrooms provide comfortable living spaces. Large windows ensure an abundance of natural light, while a modern bathroom features elegant fixtures and fittings.

Set within a secure and exclusive gated development, this home offers privacy and a sense of community, with well maintained communal areas adding to its appeal. Despite its peaceful setting, you're just a short walk from the green spaces of Wanstead Flats and have excellent transport links nearby, making this the ideal residence for professionals and families alike.







## Chestnut Avenue

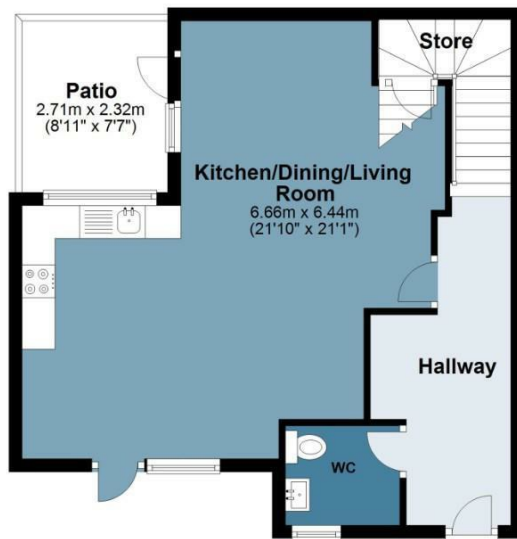
Approx. Gross Internal Area 90.9 Sq M ( 978.2 Sq Ft )

BUTLER & STAG



### Ground Floor

Approx. 46.2 sq. metres (497.0 sq. feet)



### First Floor

Approx. 44.7 sq. metres (481.1 sq. feet)



Measurements are approximate and for illustration purposes only. While we do not doubt the accuracy and completeness, we advise you conduct a careful independent assessment of the property to determine monetary value.  
© @modephoto.uk www.modephoto.co.uk

IMPORTANT NOTICE - These particulars have been prepared in good faith and they are not intended to constitute part of an offer or contract. We have not performed a structural survey on this property and the services, appliances and specific fittings have not been tested. All photographs, measurements, floor plans and distances referred to are given as a guide and should not be relied upon.

BUTLER & STAG

☎ 020 8102 1236

🏠 508 Roman Road, Bow, London, E3 5LU

✉ bow@butlerandstag.com

www.butlerandstag.uk