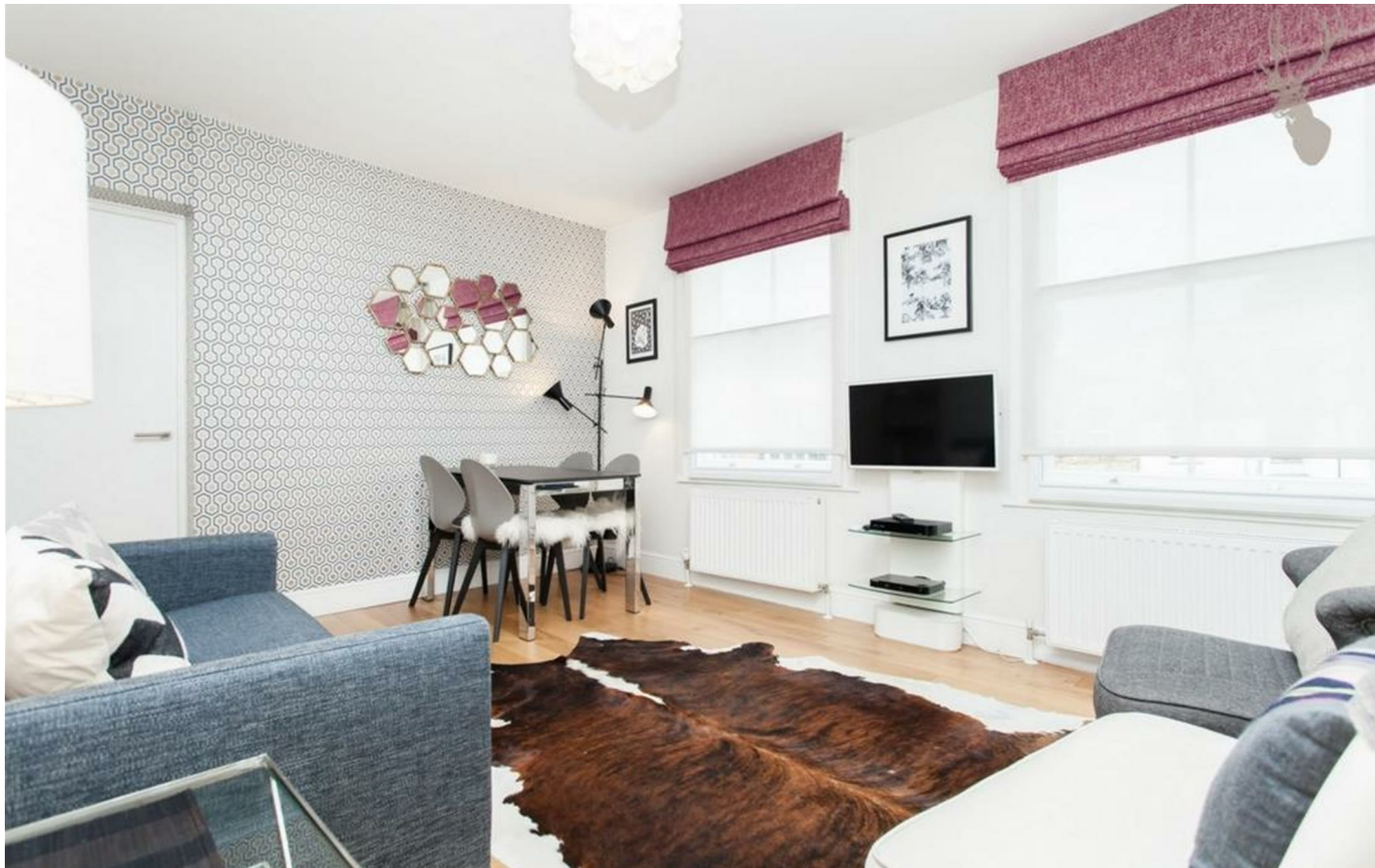




Columbia Road, London, E2

BUTLER & STAG



Gorgeous one bedroom apartment located on the iconic Columbia Road in the hub of vibrant Shoreditch.



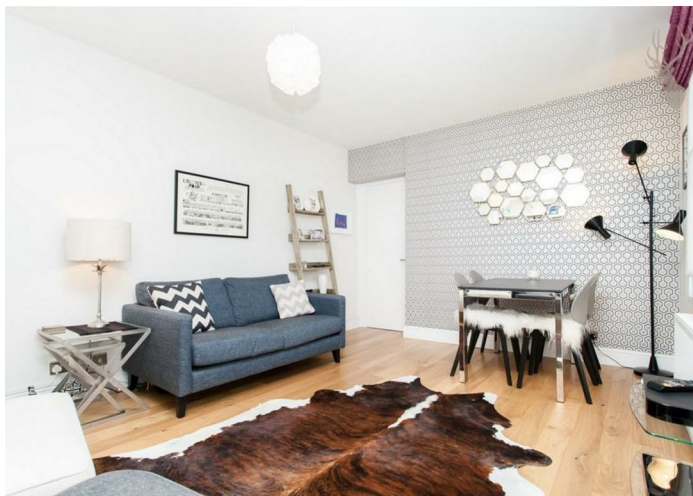
- One Bedroom Apartment
- Excellent Transport Links
- Second Floor
- Furnished
- Iconic Columbia Road Location
- Vibrant Social Hub
- Modern Fitted Kitchen
- Available from 8th July 2025

Featuring a bright reception room with space to dine and large original windows, a separate stylish fitted kitchen, a double bedroom with fitted wardrobes and a contemporary bathroom, this wonderful apartment is perfectly suited to a single professional looking for excellent transport links and a buzzing social scene.

The artisan eateries and Sunday flower market of Columbia Road are on your doorstep, with Hoxton overground station also only a short stroll away. Liverpool Street station is easily accessible as well, not to mention all that Shoreditch has to offer just moments away.

Offered furnished and available from 8th July 2025.

EPC Rating D
Council Tax Band B

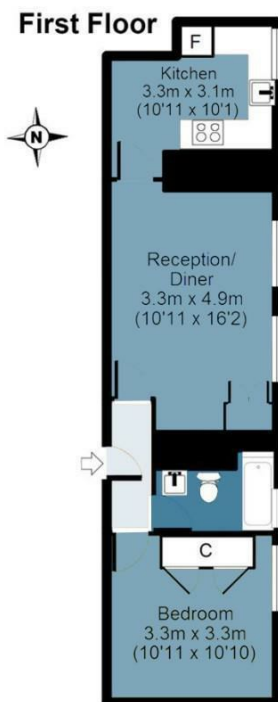




Columbia Road

Approx. Gross Internal Area 43 Sq M (467 Sq Ft)

BUTLER & STAG



Measurements are approximate and for illustration purposes only. While we do not doubt the accuracy and completeness, we advise you conduct a careful independent assessment of the property to determine monetary value.
© @modephoto.uk www.modephoto.co.uk

IMPORTANT NOTICE - These particulars have been prepared in good faith and they are not intended to constitute part of an offer or contract. We have not performed a structural survey on this property and the services, appliances and specific fittings have not been tested. All photographs, measurements, floor plans and distances referred to are given as a guide and should not be relied upon.

BUTLER & STAG

☎ 020 8102 1236

🏠 508 Roman Road, Bow, London, E3 5LU

✉ bow@butlerandstag.com

www.butlerandstag.uk