



Palmers Road, London, E2

BUTLER & STAG



This beautifully designed studio suite residence offers a sleek, modern living experience, ideal for individuals seeking both comfort and style. Perfectly suited for professionals or anyone looking for a well-connected, low-maintenance residence, this studio suite is a true gem in a desirable location.



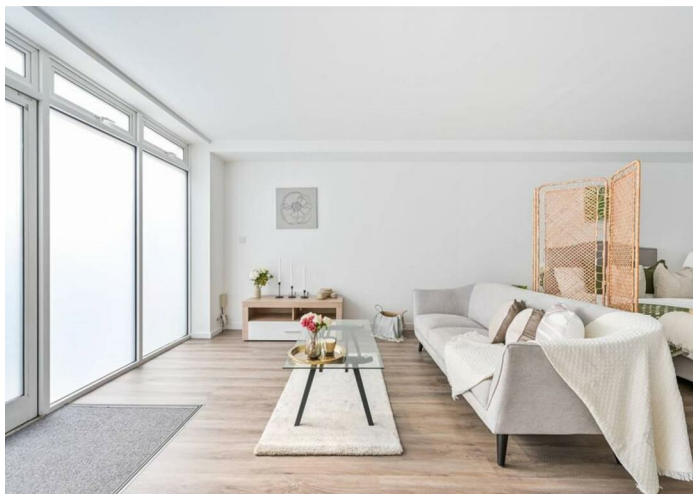
Leasehold

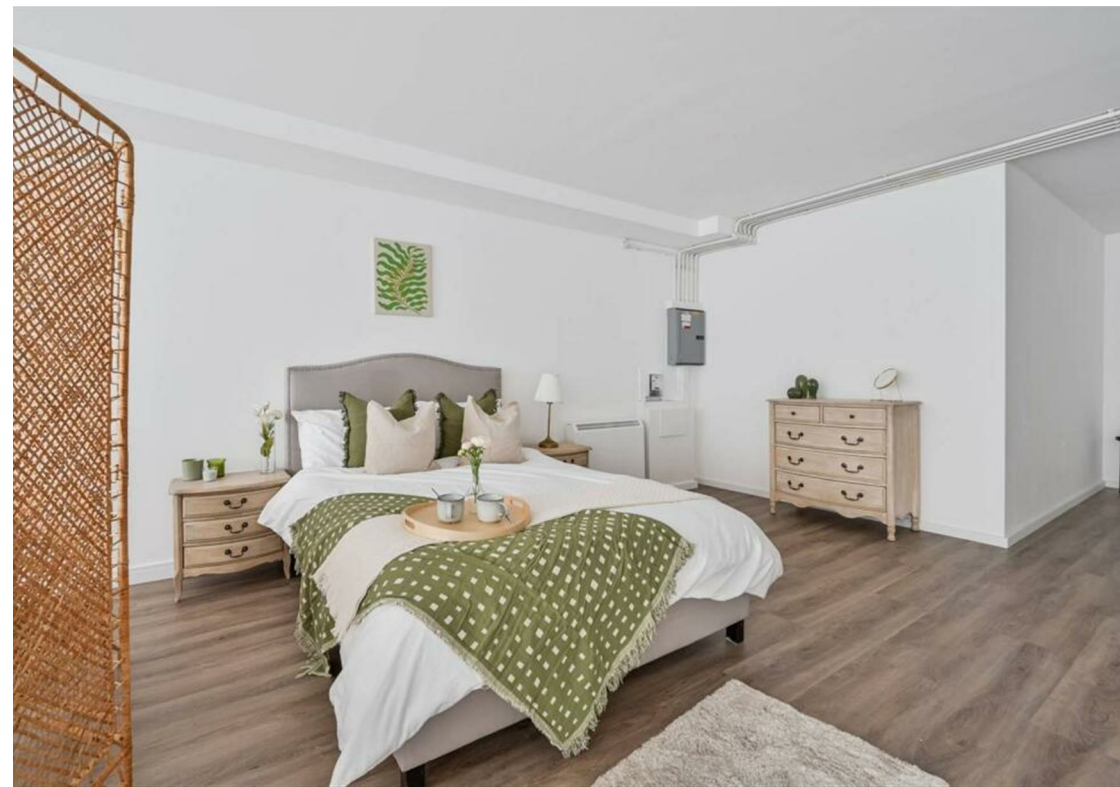
- Studio Suite Residence
- 709 Sq/Ft Internal Living Space
- Canal Walks Moments Away
- Chain Free
- Open-Concept Living Area
- Mile End Station & Bethnal Green Station Close By
- Fully Modernised Kitchen
- Short Walk To Victoria Park

This beautifully designed Studio Suite Residence offers the perfect blend of style and functionality. The apartment features an open-plan layout, with a spacious living area filled with natural light. The fully-equipped kitchen includes all the essentials for comfortable living, featuring modern appliances and ample storage space. The sleek, contemporary bathroom is complete with a walk-in shower and modern fixtures.

Conveniently located, the apartment is within walking distance of local amenities, transport links, and vibrant shops and restaurants, ensuring everything you need is just a stone's throw away. For those who enjoy the outdoors, scenic canal walks are just moments away, and the apartment is also a short walk to Victoria Park, providing a peaceful retreat right on your doorstep.

This property is ideal for anyone looking for an efficient yet sophisticated home in a prime location.





Palmers Road, London

Approx. Gross Internal Area 65.9 Sq M (709 Sq Ft)

BUTLER & STAG

GROUND FLOOR



Measurements are approximate and for illustration purposes only. While we do not doubt the accuracy and completeness, we advise you conduct a careful independent assessment of the property to determine monetary value.
© @modephotouk www.modephoto.co.uk

IMPORTANT NOTICE - These particulars have been prepared in good faith and they are not intended to constitute part of an offer or contract. We have not performed a structural survey on this property and the services, appliances and specific fittings have not been tested. All photographs, measurements, floor plans and distances referred to are given as a guide and should not be relied upon.

BUTLER & STAG

☎ 020 8102 1236

🏠 508 Roman Road, Bow, London, E3 5LU

✉ bow@butlerandstag.com

www.butlerandstag.uk