



Eastside Mews, London, E3





**Smartly presented two bedroom modern apartment, well located for transport links and with allocated parking included.**



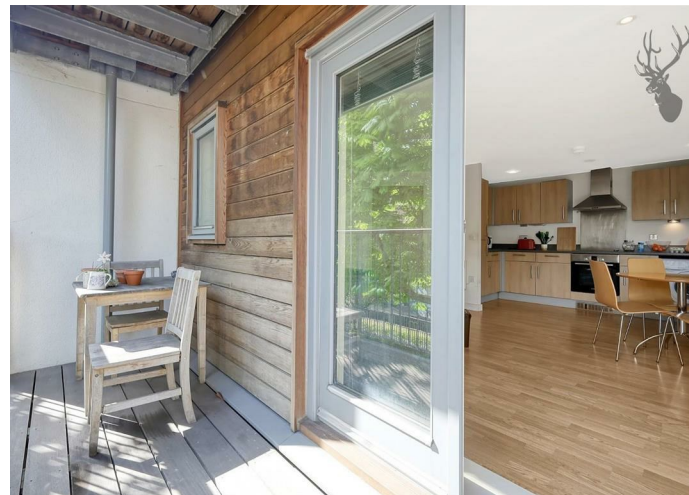
- Two Double Bedrooms
- Allocated Parking Space
- Excellent Transport Links
- Furnished
- Modern Bathroom
- Private Balcony
- Victoria Park and Roman Road Nearby
- Available Immediately!

Nestled in a popular Bow neighbourhood close to an array of stations (Bow Road, Bow Church and Mile End), Roman Road and Victoria Park, this contemporary property offers an ideal blend of comfort, convenience and style. Featuring a private balcony and an allocated parking space, this residence presents a coveted urban lifestyle with a touch of tranquillity.

Comprising of two double bedrooms, a modern bathroom and a spacious open-plan kitchen / living area, this apartment would make an ideal home for two sharing professionals or a couple seeking some additional space.

Available immediately and offered furnished.

EPC Rating B  
Council Tax Band D





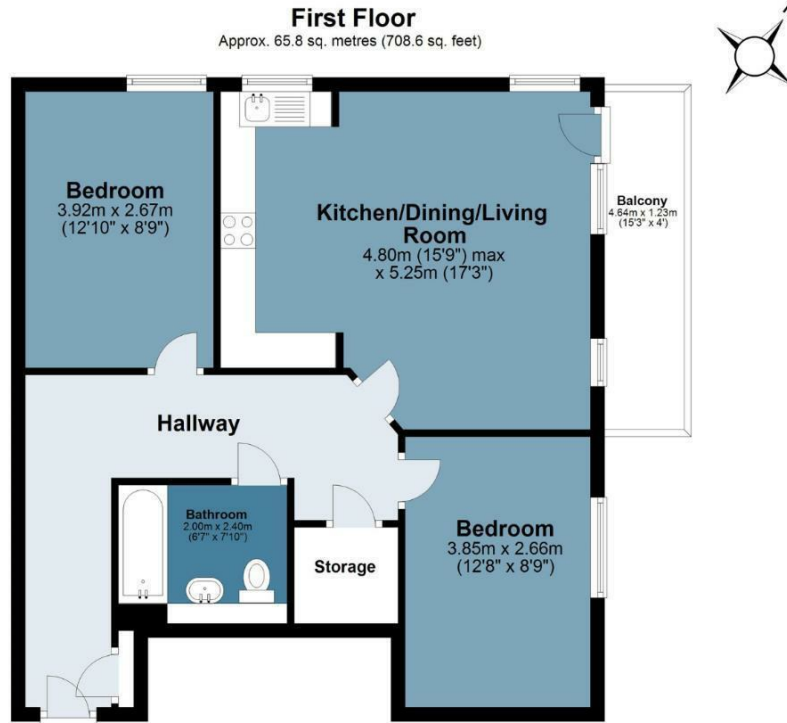




## Eastside Mews

Approx. Gross Internal Area 65.8 sq. metres (708.6 sq. feet)

BUTLER & STAG



Measurements are approximate and for illustration purposes only. While we do not doubt the accuracy and completeness, we advise you conduct a careful independent assessment of the property to determine monetary value  
© @modephotouk www.modephoto.co.uk

IMPORTANT NOTICE - These particulars have been prepared in good faith and they are not intended to constitute part of an offer or contract. We have not performed a structural survey on this property and the services, appliances and specific fittings have not been tested. All photographs, measurements, floor plans and distances referred to are given as a guide and should not be relied upon.

BUTLER & STAG

☎ 020 8102 1236

🏠 508 Roman Road, Bow, London, E3 5LU

✉ bow@butlerandstag.com

[www.butlerandstag.uk](http://www.butlerandstag.uk)