



Cadmium Square, London, E2

BUTLER  STAG





# Stunning two bedroom two bathroom apartment set on the tenth floor of a modern, canalside development in E2.



- Stunning Two Bedroom Apartment
- Two Bathrooms
- Modern Finish Throughout
- Part Furnished
- Tenth Floor with City Views
- Private Balcony
- Mile End Station Nearby
- Available 24th May 2025

Positioned on the Regents Canal, just moments from both Victoria Park and Mile End Park, also within easy reach of key transport links including Mile End and Bethnal Green underground stations, this contemporary property is the pinnacle of city living.

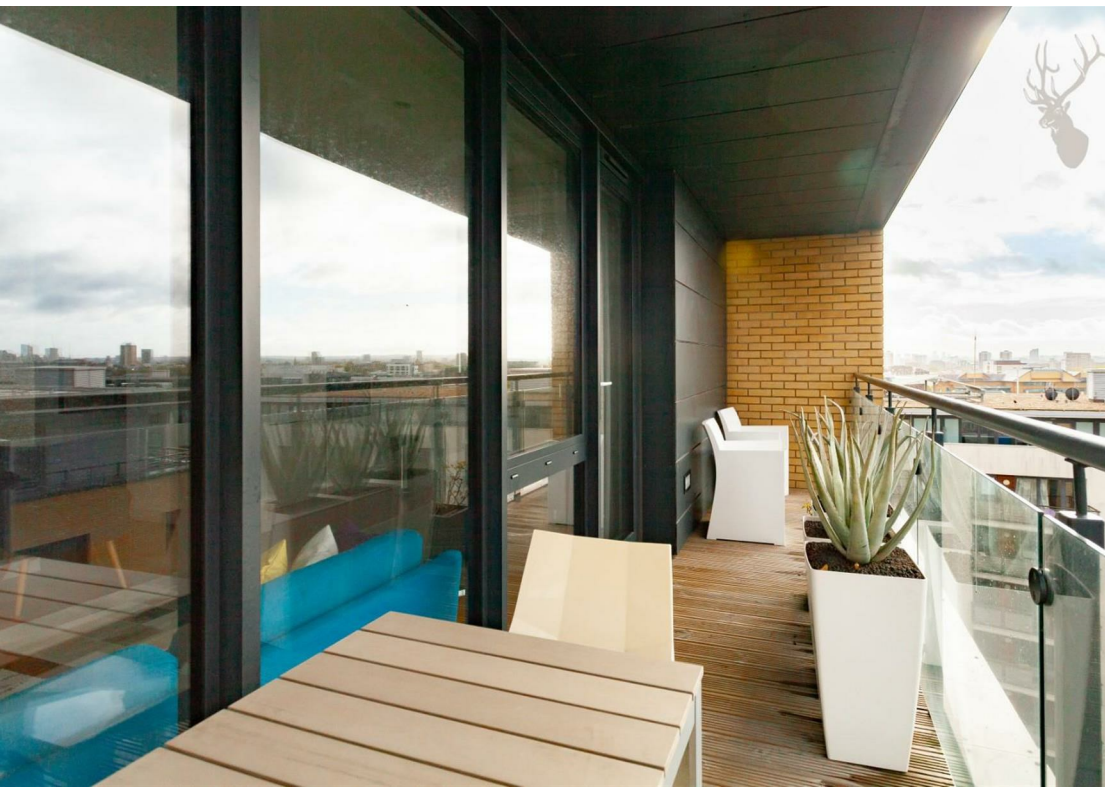
Finished to a high specification throughout, the accommodation comprises of a bright and spacious living area / integrated kitchen, two double bedrooms (one with an en-suite shower room), main bathroom and a large hallway storage cupboard. The real highlight though is the west-facing balcony, which provides uninterrupted views over the iconic city skyline.

Offered part furnished and available from 24th May 2025.

EPC Rating B  
Council Tax Band D







## Grand Regent Tower, Cadmium Square, E2

Approx. Gross Internal Area 731 Sq Ft - 67.91 Sq M  
Approx. Gross Balcony Area 90 Sq Ft - 8.36 Sq M

BUTLER & STAG



### Tenth Floor

Floor Area 731 Sq Ft - 67.91 Sq M



Measured according to RICS IPMS2. Floor plan is for illustrative purposes only and is not to scale. Every attempt has been made to ensure the accuracy of the floor plan shown, however all measurements, fixtures, fittings and data shown are an approximate interpretation for illustrative purposes only. 1 sq m = 10.76 sq feet.

lpaplus.com

Date: 02/11/2022

BUTLER & STAG

☎ 020 8102 1236

🏠 508 Roman Road, Bow, London, E3 5LU

✉ bow@butlerandstag.com

www.butlerandstag.uk

IMPORTANT NOTICE - These particulars have been prepared in good faith and they are not intended to constitute part of an offer or contract. We have not performed a structural survey on this property and the services, appliances and specific fittings have not been tested. All photographs, measurements, floor plans and distances referred to are given as a guide and should not be relied upon.