



Gathorne Street, London, E2

BUTLER  STAG



Beautiful two bedroom split-level apartment set within a handsome Victorian school conversion close to Victoria Park.



- Two Bedroom Split-Level Apartment
- Secure Gated Development
- Beautifully Finished Throughout
- Unfurnished
- Period School Conversion
- Allocated Off-Street Parking
- Fantastic Location
- Available Immediately

Newly redecorated and improved throughout, this unique apartment is situated on the second and third floors of this imposing building which is within a secure, gated development with a communal roof terrace. Allocated off-street parking for one car is also included.

Located in trendy Bethnal Green, the property is within easy reach of Bethnal Green and Mile End underground stations, is within touching distance of the ever-popular Victoria Park and benefits from the local amenities of Roman Road.

The apartment itself features a wonderfully spacious reception with views over the city skyline, a modern fitted kitchen, a large master bedroom, guest bedroom / study and a gorgeous bathroom. There is plenty of storage throughout and the high ceilings and period features really add to the ambience and aesthetic.

Perfect for a single professional or professional couple requiring work-from-home space, this must-see property is offered unfurnished and is available now!

EPC Rating C
Council Tax Band D





Bow Brook House

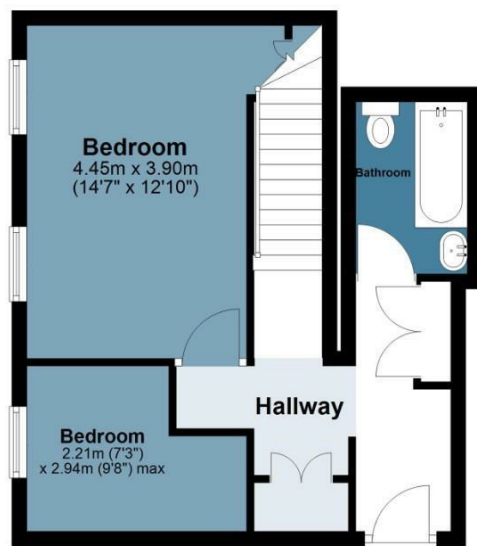
Approx. Gross Internal Area 73.2 Sq M (788.2 Sq Ft)

BUTLER & STAG



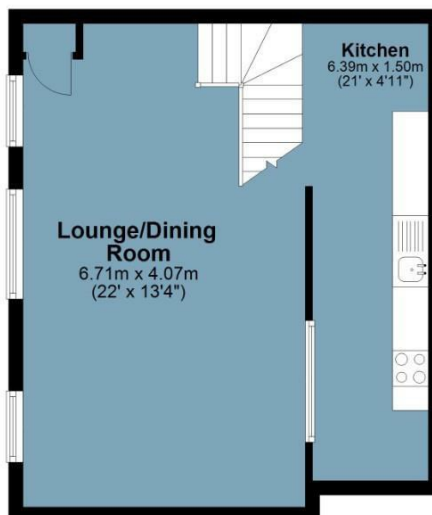
Second Floor

Approx. 35.7 sq. metres (384.2 sq. feet)



Third Floor

Approx. 37.5 sq. metres (404.0 sq. feet)



Measurements are approximate and for illustration purposes only. While we do not doubt the accuracy and completeness, we advise you conduct a careful independent assessment of the property to determine monetary value.
© @modephoto.uk www.modephoto.co.uk

IMPORTANT NOTICE - These particulars have been prepared in good faith and they are not intended to constitute part of an offer or contract. We have not performed a structural survey on this property and the services, appliances and specific fittings have not been tested. All photographs, measurements, floor plans and distances referred to are given as a guide and should not be relied upon.

BUTLER & STAG

☎ 020 8102 1236

🏠 508 Roman Road, Bow, London, E3 5LU

✉ bow@butlerandstag.com

www.butlerandstag.uk