



Tredegar Road, London, E3

BUTLER  STAG





**\*Short Let 3-6 Months\***  
**Set within one of East London's historical conservation areas, this modern two bedroom, two bathroom apartment offers 810 sq. ft. of contemporary living space in the heart of Bow.**



- Short Let of 3-6 Months
- 810 Sq/Ft Internal Living Space
- Victoria Park and Westfield Shopping Centre Close By
- Unfurnished or Part Furnished
- Two Bedrooms and Two Bathrooms
- Full-Width South-Facing Private Terrace
- Bow Church and Bow Road Stations Also Nearby
- Available from 7th May 2025

Accessed via secure entrance, this property features a well-presented open-plan living and kitchen area with ample space for dining and doors that open out onto a south-facing, full-width terrace which overlooks the characterful and pretty tree lined Douro Street, one of very few remaining cobbled streets in Bow.

Further comprising of two double bedrooms and two smart bathrooms (one en-suite), there is the added bonus of access to a tranquil communal roof-top terrace with views across the city of London and towards Canary Wharf.

Fortius Apartments is an established residential development with easy access to Victoria Park, Westfield Shopping centre and strong transport links, including Hackney Wick overground, Bow Church DLR and Bow Road underground stations.

Offered unfurnished or part furnished, this property is available from 7th May 2025.

EPC Rating B  
 Council Tax Band D





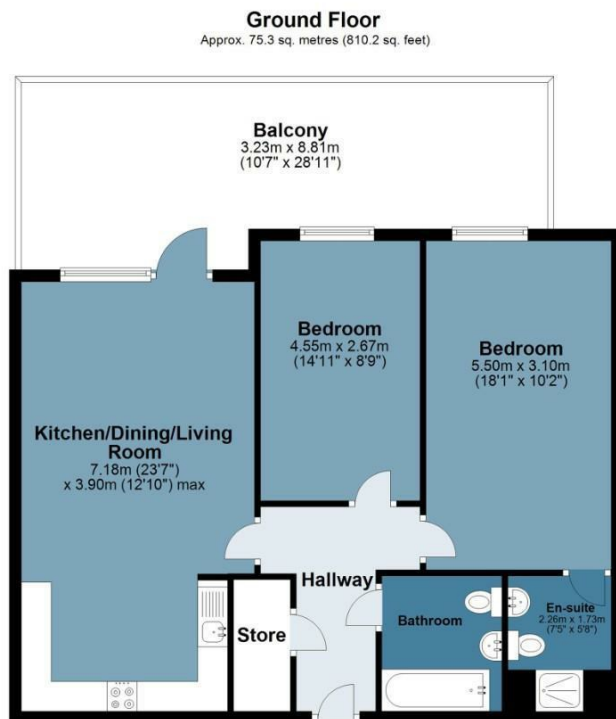




## Fortius Apartments

Approx. Gross Internal Area 75.3 Sq M ( 810.2 Sq Ft )

BUTLER & STAG



Measurements are approximate and for illustration purposes only. While we do not doubt the accuracy and completeness, we advise you conduct a careful independent assessment of the property to determine monetary value.  
© @modephoto.uk www.modephoto.co.uk

IMPORTANT NOTICE - These particulars have been prepared in good faith and they are not intended to constitute part of an offer or contract. We have not performed a structural survey on this property and the services, appliances and specific fittings have not been tested. All photographs, measurements, floor plans and distances referred to are given as a guide and should not be relied upon.

BUTLER & STAG

☎ 020 8102 1236

🏠 508 Roman Road, Bow, London, E3 5LU

✉ bow@butlerandstag.com

[www.butlerandstag.uk](http://www.butlerandstag.uk)