



Arbour Square, London, E1

BUTLER  STAG



PRICE GUIDE £375,000 - £400,000

Nestled away in the heart of Stepney Green is this well-presented two-bedroom apartment which is situated adjacent to the leafy Arbour Square Gardens. Established in 1819 as a Garden enclosure this desirable Georgian square has restored its classic East London Charm offering a blend of historical architecture and modern amenities.



Leasehold

- Two-Bedrooms
- First Floor Apartment
- Limehouse Station A Moments Walk Away
- Albert Gardens Conservation Area
- Seperate Kitchen
- Stunning Location
- Great First Time Purchase / B2L Investment
- Balcony

Retaining charming character features, the property seamlessly blends its mid-century origins with modern styling, offering a unique and comfortable living space. The flat boasts generously sized rooms, ideal for relaxing or entertaining, and a layout designed to maximize space and functionality.

Located just a short stroll from Stepney Green Station, the property is well-connected, offering convenient access to the City, Canary Wharf, and beyond. The surrounding area is alive with local amenities, green spaces, and a vibrant community spirit.

This is an exceptional opportunity to own a piece of Stepney Green's rich architectural history, perfect for first-time buyers, investors, or those seeking a stylish urban retreat.

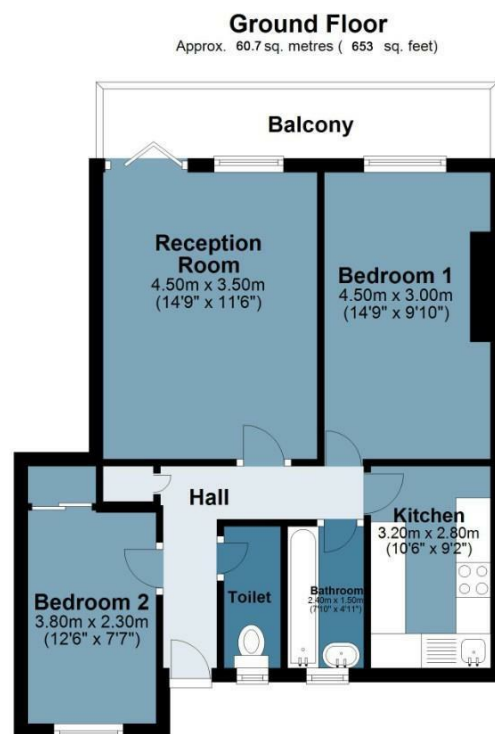




Arbour Square

Approx. Gross Internal Area 60.7 Sq M (653 Sq Ft)

BUTLER & STAG



Measurements are approximate and for illustration purposes only. While we do not doubt the accuracy and completeness, we advise you conduct a careful independent assessment of the property to determine monetary value.
© @modephoto.uk www.modephoto.co.uk

IMPORTANT NOTICE - These particulars have been prepared in good faith and they are not intended to constitute part of an offer or contract. We have not performed a structural survey on this property and the services, appliances and specific fittings have not been tested. All photographs, measurements, floor plans and distances referred to are given as a guide and should not be relied upon.

BUTLER & STAG

☎ 020 8102 1236

🏠 508 Roman Road, Bow, London, E3 5LU

✉ bow@butlerandstag.com

www.butlerandstag.uk