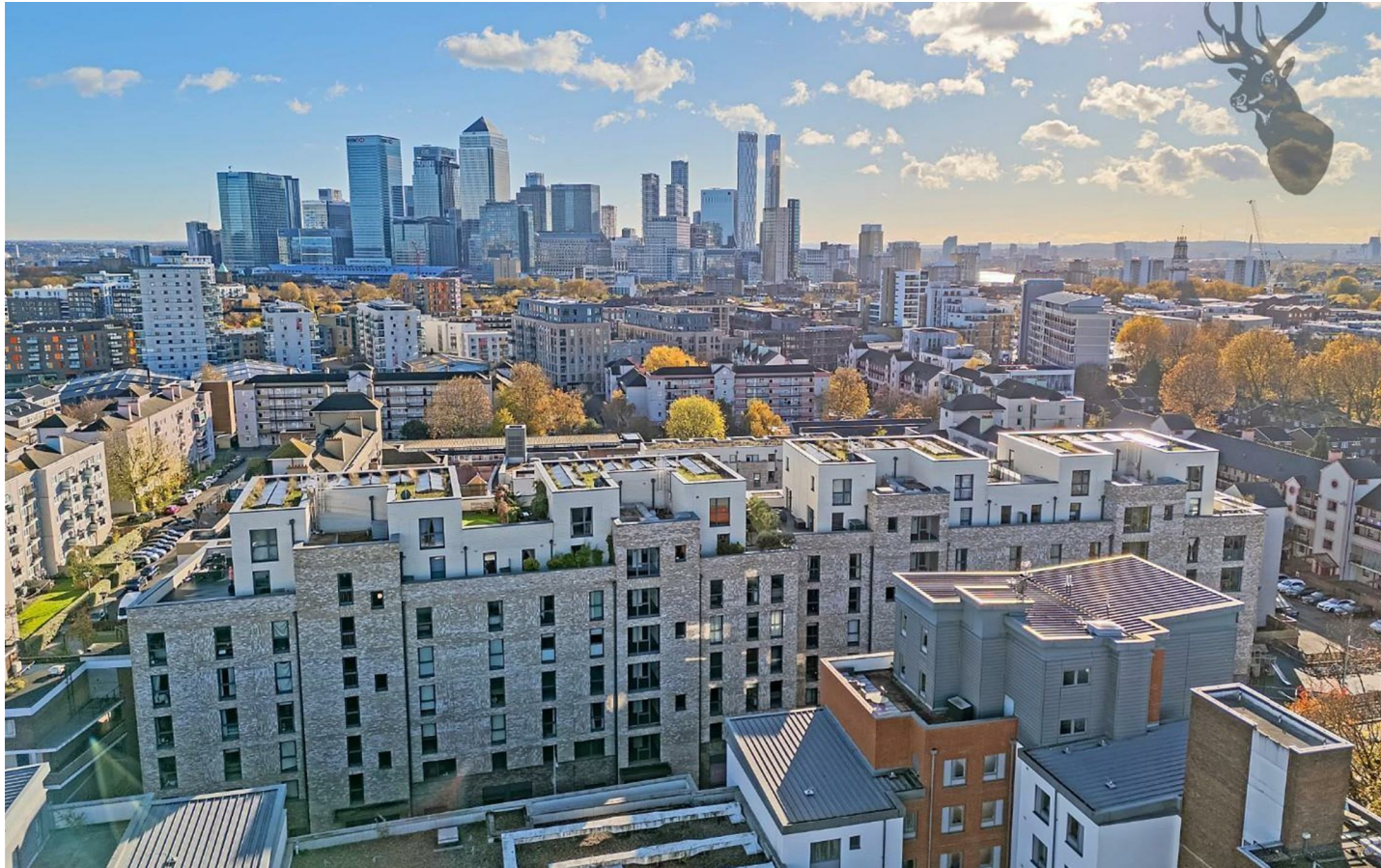




St. Pauls Way, London, E3

BUTLER & STAG



Guide Price £350,000 - £375,000
Nestled within the contemporary Bow Garden Square development, this stylish one bedroom apartment in Duesbury House seamlessly blends modern design with urban convenience.



Leasehold

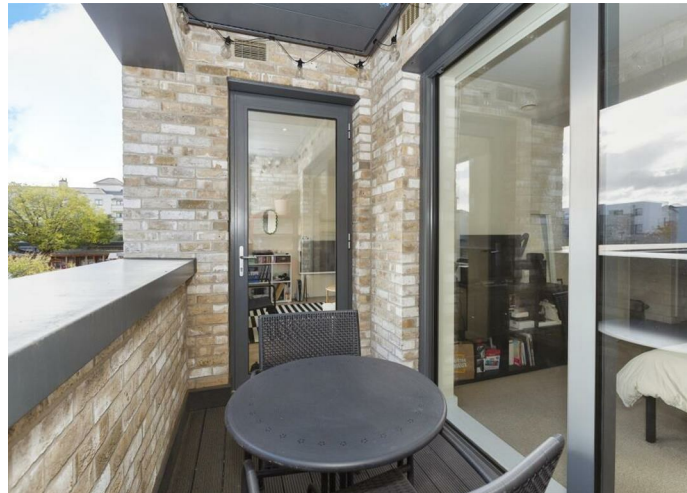
- Private South Facing Balcony
- One Bedroom
- Open Concept Living
- Bicycle Storage
- First Floor Apartment
- Lift Access To All Levels
- Mile End Park & Regents Canal A Moments Walk Away
- Chain Free

This residence features an open-plan living area complemented by a sleek, fully-fitted kitchen equipped with integrated appliances. The interiors are adorned with engineered wood flooring and benefit from underfloor heating, ensuring a warm and inviting atmosphere throughout.

The spacious bedroom comes with built-in storage solutions, while the modern bathroom is designed with both bath and shower facilities to cater to diverse preferences.

A standout feature of these apartments is the private balcony, offering residents stunning south-facing views towards the iconic Canary Wharf skyline.

Residents of Duesbury House also have access to secure bicycle storage, catering to those who prefer cycling as their mode of transport. The development's prime location ensures that essential amenities are within easy reach. Devons Road DLR station is a short walk away, providing swift connections to Canary Wharf and the City. Additionally, Mile End Underground Station, serving the Central, District, and Hammersmith & City lines, is approximately 0.8 miles from the property. For leisure and recreation, nearby green spaces such as Mile End Park, Victoria Park, and the Limehouse Cut Canal offer ample opportunities for outdoor activities.

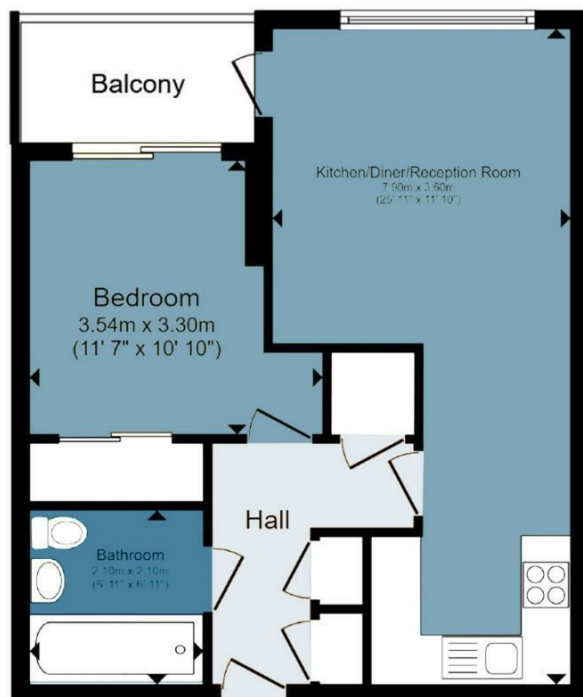




Duesbury House, E3

Approx. Gross Internal Area 46.9 sq. metres (505 sq. feet)

BUTLER & STAG



Measurements are approximate and for illustration purposes only. While we do not doubt the accuracy and completeness, we advise you conduct a careful independent assessment of the property to determine monetary value
© @modephoto.uk www.modephoto.co.uk

IMPORTANT NOTICE - These particulars have been prepared in good faith and they are not intended to constitute part of an offer or contract. We have not performed a structural survey on this property and the services, appliances and specific fittings have not been tested. All photographs, measurements, floor plans and distances referred to are given as a guide and should not be relied upon.

BUTLER & STAG

☎ 020 8102 1236

🏠 508 Roman Road, Bow, London, E3 5LU

✉ bow@butlerandstag.com

www.butlerandstag.uk