



Voss Street, London, E2

BUTLER  STAG



Guide Price £850,000 - £900,000
Nestled on one of only a few remaining cobbled streets in Bethnal Green (Voss Street), this exceptional townhouse offers versatile accommodation across four floors. The property features three generously proportioned bedrooms and an array of flexible living spaces to suit a variety of lifestyles.



Freehold

- Four Storey (Freehold) Townhouse
- Three Bedrooms
- Chain Free
- Resident Parking Permit Available
- Private Full Width Terrace
- Two Bathrooms
- 1087 Sq/Ft Internal Living Space
- Weavers Field and Victoria Park A Moments Walk Away

Located in the heart of Bethnal Green, a thriving, cultural creative hub comprising independent cafes, bars and warehouse pop-up art galleries, this energetic neighbourhood will be a truly inspiring place to live. Ideal for both budding entrepreneurs and anyone looking to embrace the creative vibe of this wonderful location.

The award winning Victoria Park one of east London's most spacious alfresco-eating spots, with two lakes, a boating pond, playgrounds, and a scattering of other Instagram-worthy delights are close by.

The convenience of having Bethnal Green and Shoreditch High Street Station a moments' walk away is ideal for swift access to Canary Wharf or Liverpool Street. Brick Lane, Columbia Road, Spitalfields and Shoreditch have some of East London's best restaurants, shops and bars, making this an ideal location from which to enjoy all the local amenities.





Voss Sreet

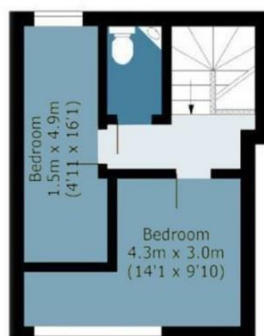
Approx. Gross Internal Area 101 Sq M (1087 Sq Ft)

BUTLER & STAG



First Floor

Approx. 27 Sq. meters (291 Sq. feet)



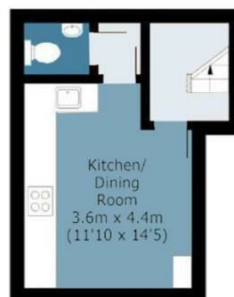
Second Floor

Approx. 24 Sq. meters (258 Sq. feet)



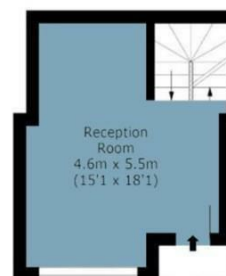
Basement

Approx. 22 Sq. meters (237 Sq. feet)



Ground Floor

Approx. 24 Sq. meters (258 Sq. feet)



Measurements are approximate and for illustration purposes only. While we do not doubt the accuracy and completeness, we advise you conduct a careful independent assessment of the property to determine monetary value.
© @modephotouk www.modephoto.co.uk

IMPORTANT NOTICE - These particulars have been prepared in good faith and they are not intended to constitute part of an offer or contract. We have not performed a structural survey on this property and the services, appliances and specific fittings have not been tested. All photographs, measurements, floor plans and distances referred to are given as a guide and should not be relied upon.

BUTLER & STAG

☎ 020 8102 1236

🏠 508 Roman Road, Bow, London, E3 5LU

✉ bow@butlerandstag.com

www.butlerandstag.uk