



Aston Street, London, E14

BUTLER & STAG



Guide Price - £600,000 to £650,000

This exceptional two-bedroom, two-bathroom modern apartment offers a perfect blend of style, comfort, and outdoor living, ideally situated on the 11th floor of a contemporary development near White Horse Road Park.



Leasehold

- Two Double Bedrooms
- Stunning City Views
- Ample Storage Throughout.
- EWS1 Compliant
- Large Private Terrace
- 11th Floor
- Beautifully Well Presented
- Close Proximity To Limehouse DLR Station

The standout feature of this home is the huge private terrace, providing breathtaking panoramic views of the city skyline—a true urban oasis, perfect for entertaining, relaxing, or enjoying al fresco dining.

Inside, the apartment is thoughtfully designed with a spacious open-plan living area that seamlessly integrates with the modern kitchen, creating a bright and functional space for everyday living. Both bedrooms are generously sized, with the principal bedroom benefiting from an en-suite bathroom, complemented by an additional well-appointed family bathroom.

Nestled in a vibrant and green setting next to White Horse Road Park, this property enjoys the best of both worlds: tranquil surroundings and close proximity to excellent transport links and local amenities.

Key Features:

Spacious two-bedroom, two-bathroom apartment on the second-to-top floor
 Expansive private terrace with stunning city views
 Bright and modern open-plan living and kitchen area
 Principal bedroom with en-suite plus an additional bathroom
 Convenient location near White Horse Road Park and transport links

This rare find is perfect for professionals, couples, or investors looking for a home with incredible outdoor space and unbeatable views. Arrange a viewing today to experience it for yourself!

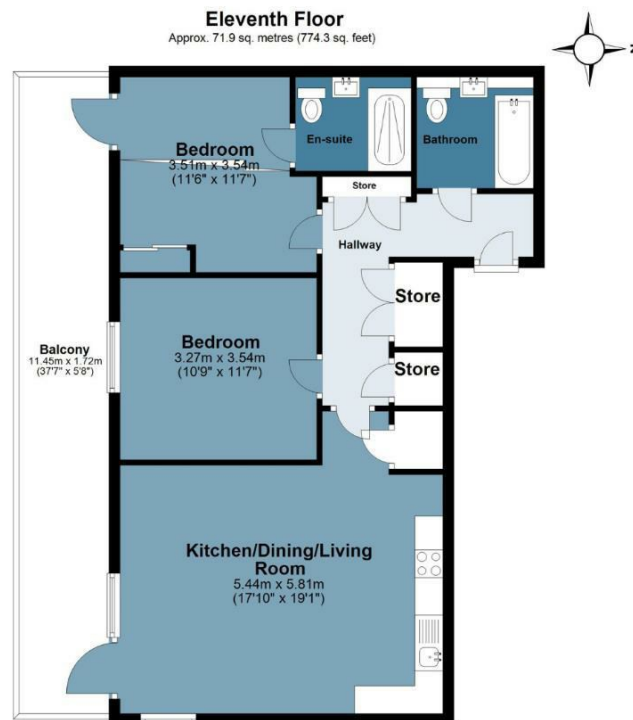




Vespucci Court

Approx. Gross Internal Area 71.9 sq. metres (774.3 sq. feet)

BUTLER & STAG



Measurements are approximate and for illustration purposes only. While we do not doubt the accuracy and completeness, we advise you conduct a careful independent assessment of the property to determine monetary value
© @modephoto.uk www.modephoto.co.uk

IMPORTANT NOTICE - These particulars have been prepared in good faith and they are not intended to constitute part of an offer or contract. We have not performed a structural survey on this property and the services, appliances and specific fittings have not been tested. All photographs, measurements, floor plans and distances referred to are given as a guide and should not be relied upon.

BUTLER & STAG

☎ 020 8102 1236

🏠 508 Roman Road, Bow, London, E3 5LU

✉ bow@butlerandstag.com

www.butlerandstag.uk