



Maltings Close, London, E3

BUTLER & STAG



Two bedroom two bathroom apartment situated on the banks of the River Lea in a popular development close to Bromley-by-Bow station.



- Two Double Bedroom Apartment
- Two Bathrooms
- Spacious Open-Plan Kitchen/Reception
- Close to Bromley-by-Bow Station
- Allocated Car Parking Space
- Sixth Floor
- Part Furnished
- Available from 49th July 2025

This spacious sixth floor property complete with an allocated car parking space, comprises of a large open-plan fitted kitchen / reception with plenty of space for living and dining, two double bedrooms, two bathrooms (one en-suite) and ample internal storage.

Just moments from Bromley-by-Bow underground station, Maltings Close is also well positioned for local supermarkets and riverside walks towards Hackney Wick / the Queen Elizabeth Olympic Park in one direction and Docklands in the other.

Offered part furnished, this property is available from 9th July 2025.

EPC Rating C
Council Tax Band D

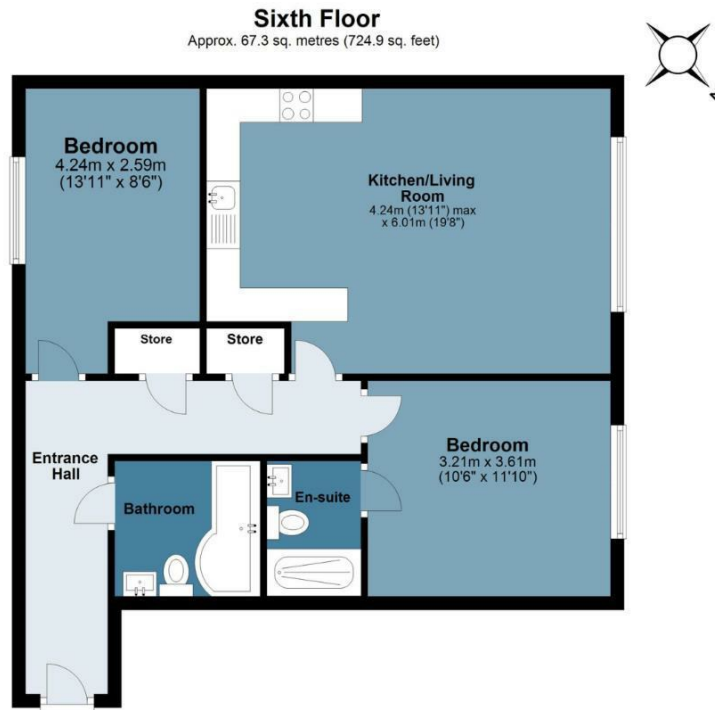




Maltings Close

BUTLER & STAG

Approx. Gross Internal Area 67.3 sq. metres (724.9 sq. feet)



Measurements are approximate and for illustration purposes only. While we do not doubt the accuracy and completeness, we advise you conduct a careful independent assessment of the property to determine monetary value
© @modephoto.uk www.modephoto.co.uk

IMPORTANT NOTICE - These particulars have been prepared in good faith and they are not intended to constitute part of an offer or contract. We have not performed a structural survey on this property and the services, appliances and specific fittings have not been tested. All photographs, measurements, floor plans and distances referred to are given as a guide and should not be relied upon.

BUTLER & STAG

☎ 020 8102 1236

🏠 508 Roman Road, Bow, London, E3 5LU

✉ bow@butlerandstag.com

www.butlerandstag.uk