



Lockhart Street, London, E3

BUTLER & STAG



**This stunning Neo-Victorian house, situated on the picturesque Lockhart Street in the heart of Bow, E3, offers modern luxury. Boasting 1,124 Sq/Ft of beautifully designed living space, this two-bedroom, two-bathroom home is ideal for those seeking a unique property that combines classic architecture with contemporary comforts.**



## Freehold

- Neo Victorian Freehold House
- 1124 Sq/Ft Internal Living Space
- Open Plan Concept Living Area
- Large Rear Garden
- Chain Free
- Two Bathrooms
- Two Bedrooms
- Down Stairs Toilet
- Mile End Tube Station Close By
- Conservatory

Retaining a classic double bayed Victorian style facade, this home demonstrates striking features of a period property.

The ground floor welcomes you into a large open-plan living and dining area, ideal for entertaining and everyday living. High ceilings, wooden flooring, and oversized windows create an airy and light-filled space.

To the rear, the stylish kitchen blends modern design. Fully equipped with high-quality integrated appliances, sleek cabinetry, and ample counter space, it opens onto a delightful conservatory.

The first floor is home to two spacious bedrooms, each with abundant natural light and ample storage. The principal bedroom offers a peaceful retreat, complete with an en-suite bathroom for added privacy and convenience. The second bedroom is ideal for guests, or as a home office and also boasts the added feature of an en-suite bathroom.

The house features a generously sized private rear garden, offering a tranquil outdoor space perfect for summer barbecues or gardening..

Located on a quiet residential street, this home offers the perfect balance of peace and connectivity. Bow Road and Mile End Underground stations are within walking distance, providing easy access to the City, Canary Wharf, and the West End. The vibrant Victoria Park, Roman Road Market, and nearby cafés, restaurants, and boutiques further enhance the area's appeal.

This rare Neo-Victorian gem in Bow offers 1,200 sq. ft. of meticulously maintained and thoughtfully designed living space. A perfect opportunity for those seeking a stylish and distinctive home.

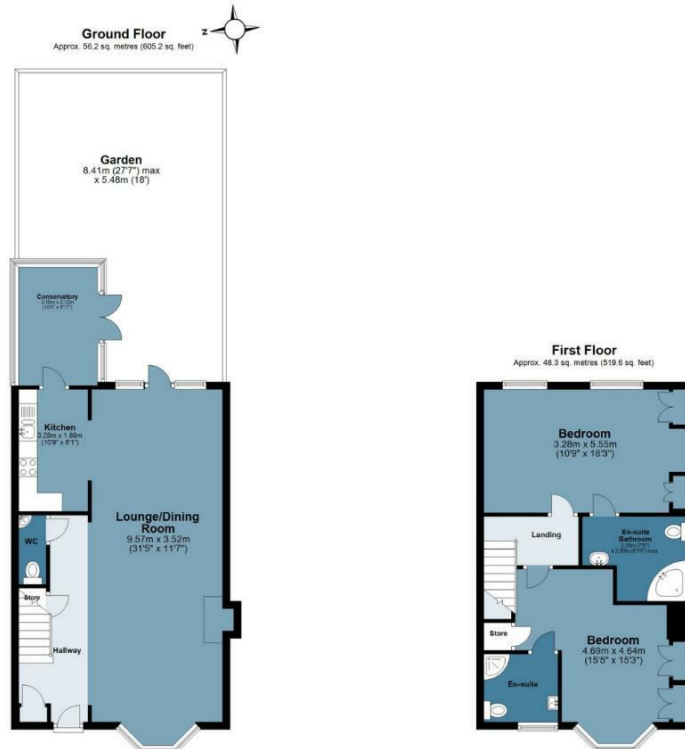




## Lockhart Street

**BUTLER & STAG**

Approx. Gross Internal Area 104.5 sq. metres 1124.8 sq. feet)



Measurements are approximate and for illustration purposes only. While we do not doubt the accuracy and completeness, we advise you conduct a careful independent assessment of the property to determine monetary value  
© @modephoto.uk www.modephoto.co.uk

**BUTLER & STAG**

☎ 020 8102 1236

🏠 508 Roman Road, Bow, London, E3 5LU

✉ bow@butlerandstag.com

IMPORTANT NOTICE - These particulars have been prepared in good faith and they are not intended to constitute part of an offer or contract. We have not performed a structural survey on this property and the services, appliances and specific fittings have not been tested. All photographs, measurements, floor plans and distances referred to are given as a guide and should not be relied upon.

[www.butlerandstag.uk](http://www.butlerandstag.uk)