



Hamstel Road, Southend-On-Sea, SS2

BUTLER & STAG





**Fantastic three-bedroom semi-detached house which has been completely refurbished to an excellent standard.**



## Freehold

- Newly Refurbished
- No Chain
- Close to Sea-Front
- West Facing Rear Garden
- Semi-Detached House
- Double Glazed Windows
- Open-Plan Kitchen
- Good Transport Links

Accommodation includes bay fronted living room with feature fireplace, open-plan kitchen/Dining room with breakfast bar, and double doors leading to the rear garden. Upstairs there are two double bedrooms, single third bedroom and a smart, modern bathroom.

Hamstel Road is well placed for the seafront, with a host of cafes and restaurants easily accessible. Southend East is the nearest rail station with trains into London Fenchurch Street in under 60 minutes.

The Property is offered with no onward chain.

P.S - The Directors of Butler & Stag have an interest in this property.



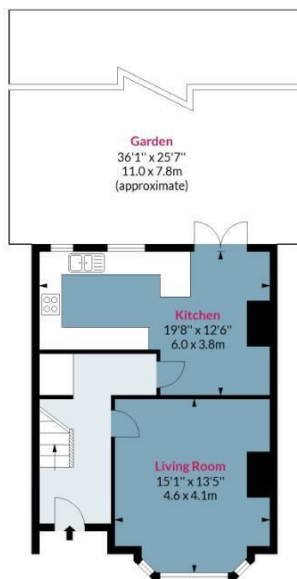




## Hamstel Road, SS2 4NF

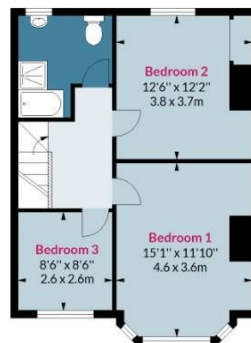
Approx. Gross Internal Area 1059 Sq Ft - 98.38 Sq M

BUTLER & STAG



**Ground Floor**

Floor Area 519 Sq Ft - 48.22 Sq M



**First Floor**

Floor Area 540 Sq Ft - 50.17 Sq M



Measured according to RICS IPMS2. Floor plan is for illustrative purposes only and is not to scale. Every attempt has been made to ensure the accuracy of the floor plan shown, however all measurements, fixtures, fittings and data shown are an approximate interpretation for illustrative purposes only. 1 sq m = 10.76 sq feet.

lpaplus.com

Date: 8/9/2022

IMPORTANT NOTICE - These particulars have been prepared in good faith and they are not intended to constitute part of an offer or contract. We have not performed a structural survey on this property and the services, appliances and specific fittings have not been tested. All photographs, measurements, floor plans and distances referred to are given as a guide and should not be relied upon.

BUTLER & STAG

☎ 020 8102 1236

🏠 508 Roman Road, Bow, London, E3 5LU

✉ bow@butlerandstag.com

www.butlerandstag.uk