



Lovelace Street, London, E8

BUTLER & STAG



Spanning over 800 Sq/Ft, this two double bedroom two bathroom apartment situated on the third floor of a fabulous modern development in Haggerston, is just a stone's throw from Stonebridge Gardens.



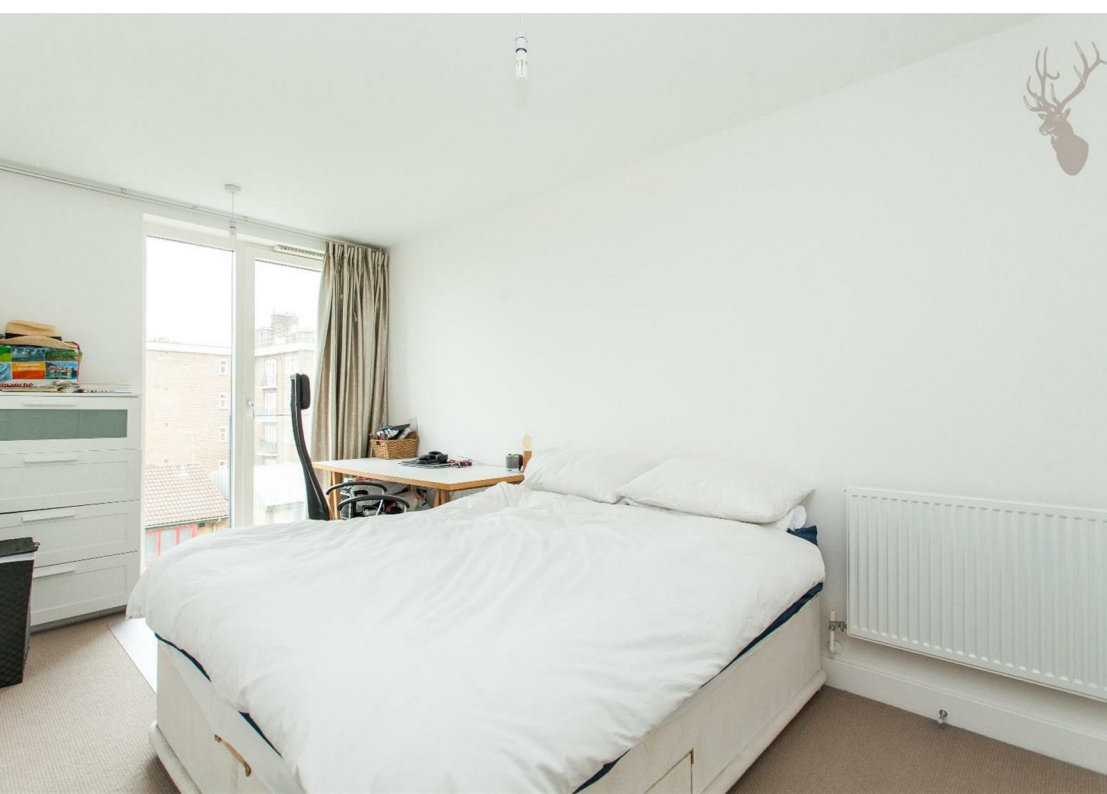
- Two Double Bedrooms
- Over 800 Sq/Ft
- Private Balcony
- Furnished
- Two Bathrooms
- Open-Plan Kitchen/Living
- Walking Distance to Haggerston Station
- Available 17th December

Superbly located for the popular bars and eateries that Dalston has to offer and just a few minutes' walk from both Haggerston and Dalston Junction train stations, this spacious open-plan style apartment comes fully furnished and features a spacious kitchen/living space, two double bedrooms, two stylish bathrooms (one en-suite) and a private balcony.

This furnished property also benefits from secure underground bicycle storage and is available from 17th December 2024.

EPC Rating B
Council Tax Band D

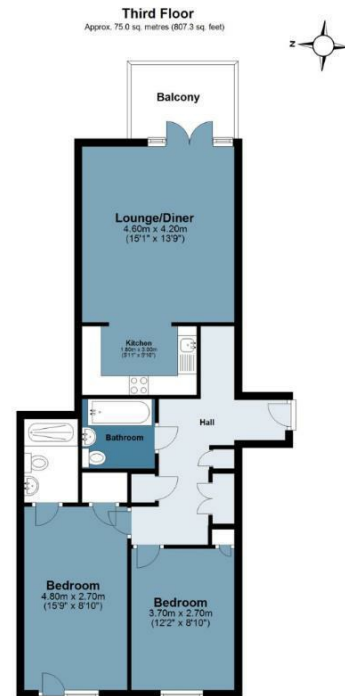




Lovelace Street

BUTLER & STAG

Approx. Gross Internal Area 75.0 sq. metres (807.3 sq. feet)



Measurements are approximate and for illustration purposes only. While we do not doubt the accuracy and completeness, we advise you conduct a careful independent assessment of the property to determine monetary value
© @modephotouk www.modephotouk.co.uk

BUTLER & STAG

☎ 020 8102 1236

🏠 508 Roman Road, Bow, London, E3 5LU

✉ bow@butlerandstag.com

www.butlerandstag.uk

IMPORTANT NOTICE - These particulars have been prepared in good faith and they are not intended to constitute part of an offer or contract. We have not performed a structural survey on this property and the services, appliances and specific fittings have not been tested. All photographs, measurements, floor plans and distances referred to are given as a guide and should not be relied upon.