



**Gunmakers Lane, London, E3**

**BUTLER & STAG**





Enjoying an attractive canal side setting on the banks of the Hertford Union Canal, Armoury House presents an unparalleled opportunity for those seeking refined urban living. Overlooking the picturesque Victoria Park, this newly constructed 2-bedroom apartment combines modern comfort with breath-taking views, promising a lifestyle of both tranquillity and convenience.



## Leasehold

- Attractive Canal Side Setting Development
- Duel Aspect Apartment
- Modern Design / High End Finishes
- Two bedrooms
- Picturesque Views of Victoria Park And The Hertford Union Canal
- 999 Year Lease
- Kitchen Diner
- 729 Sq/Ft Internal Living Space

Situated adjacent to Victoria Park, residents enjoy direct access to lush greenery, jogging trails, and recreational facilities, offering a serene retreat amidst the bustling city.

The apartment features a sleek, modern design with high-end finishes and spacious interiors, curated to enhance both comfort and style.

Dual aspect windows offer stunning vistas of Victoria Park and the surrounding skyline, providing a constant connection to nature and urban life.

With convenient access to public transportation, Armoury House connects you effortlessly to the city's cultural, dining, and entertainment hubs.

Whether relaxing in the comfort of your private balcony overlooking the park or exploring the vibrant neighborhood, Armoury House sets a new standard for luxurious city living.



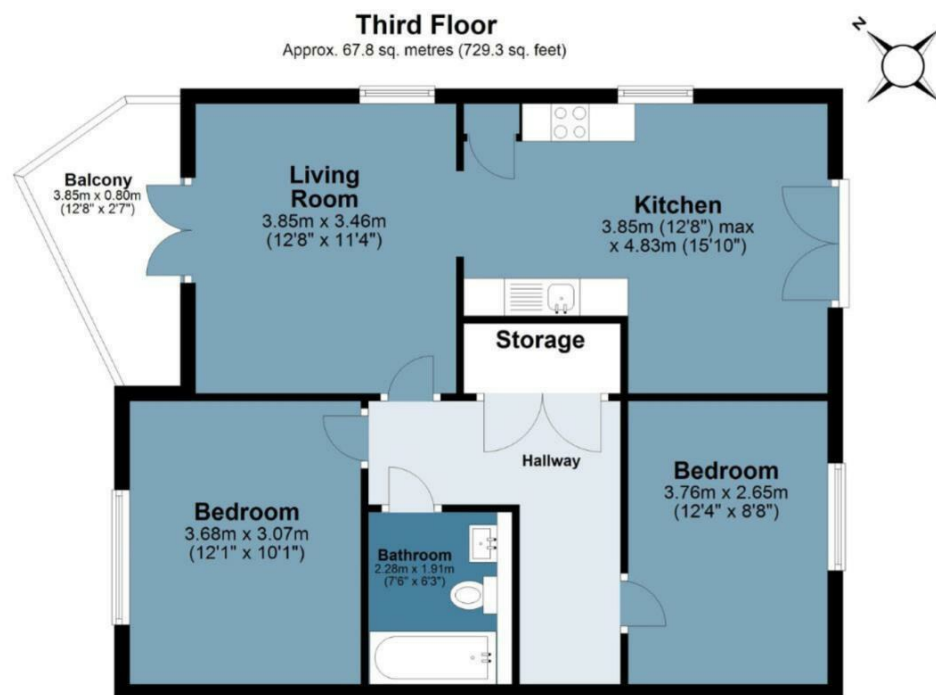




## Armoury House

Approx. Gross Internal Area 67.8 sq. metres (729.3 sq. feet)

BUTLER & STAG



Measurements are approximate and for illustration purposes only. While we do not doubt the accuracy and completeness, we advise you conduct a careful independent assessment of the property to determine monetary value  
© @modephoto.uk www.modephoto.co.uk

IMPORTANT NOTICE - These particulars have been prepared in good faith and they are not intended to constitute part of an offer or contract. We have not performed a structural survey on this property and the services, appliances and specific fittings have not been tested. All photographs, measurements, floor plans and distances referred to are given as a guide and should not be relied upon.

BUTLER & STAG

☎ 020 8102 1236

🏠 508 Roman Road, Bow, London, E3 5LU

✉ bow@butlerandstag.com

[www.butlerandstag.uk](http://www.butlerandstag.uk)