



Polydamas Close, London, E3

BUTLER & STAG



**A beautifully presented and spacious two-bedroom, two bathroom top floor (5th) apartment set within this secure gated development just moments from Bow Road station.**



## Leasehold

- Two Double Bedrooms, Two Bathrooms
- 800 Sq. Ft.
- Full-Width Balcony
- Top Floor (5th) With Lift Access
- Secure Gated Development
- 30% Shared Ownership / Rent £516 pcm
- Bike Storage & Communal Roof Terrace
- Close To Victoria Pk & Olympic Village

Measuring approximately 800 sq. ft. the property boasts well proportioned accommodation, a full-width private balcony and floor to ceiling windows allowing for a wealth of natural light.

Entering via a large hallway entrance with storage spaces, the property comprises a semi-open plan modern kitchen and reception space that flows out to the balcony with far reaching views. Both bedrooms are generous doubles with the master further benefiting from a fitted wardrobe and en-suite shower room. A contemporary family bathroom completes the property.

Diagoras House is part of a nearly new gated development with access to a communal roof terrace, video-entry system and secure bike storage.

Located within easy reach of Victoria Park, the Olympic Village and amenities of Roman Road. Multiple transport links are easily accessible including bus routes from Fairfield Road and Bow Road, whilst Bow Road (District and Hammersmith & City), Bow Church DLR and Mile End underground (Central, District and Hammersmith & City) are all close by offering swift and direct access to Canary Wharf, The City and West End.

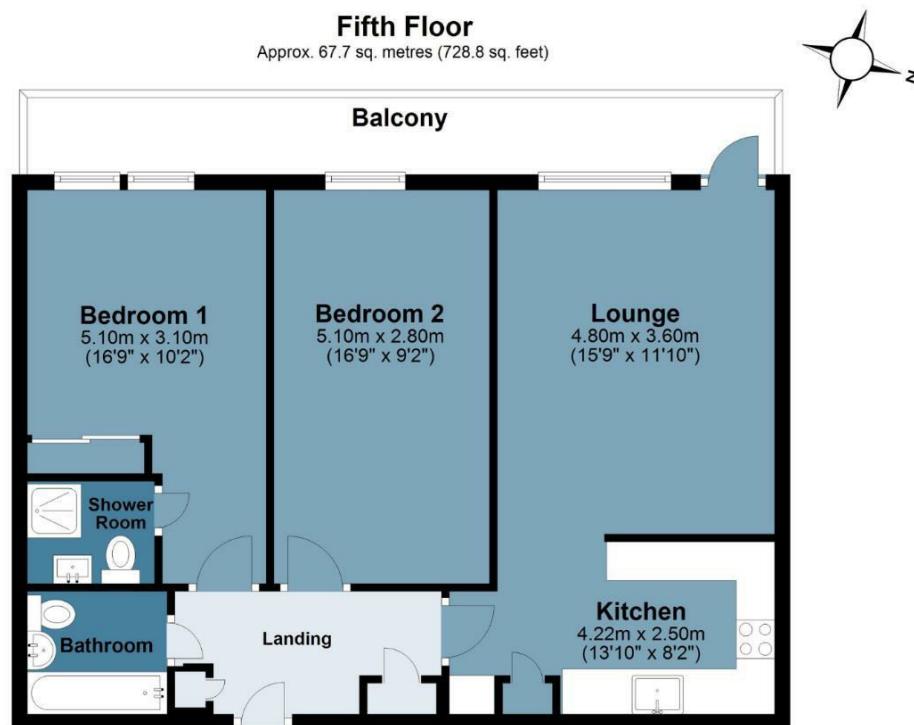




## Diagoras House

BUTLER & STAG

Approx. Gross Internal Area 67.7 sq. metres (728.8 sq. feet)



Measurements are approximate and for illustration purposes only. While we do not doubt the accuracy and completeness, we advise you conduct a careful independent assessment of the property to determine monetary value  
© @modephoto.uk www.modephoto.co.uk

IMPORTANT NOTICE - These particulars have been prepared in good faith and they are not intended to constitute part of an offer or contract. We have not performed a structural survey on this property and the services, appliances and specific fittings have not been tested. All photographs, measurements, floor plans and distances referred to are given as a guide and should not be relied upon.

BUTLER & STAG

☎ 020 8102 1236

🏠 508 Roman Road, Bow, London, E3 5LU

✉ bow@butlerandstag.com

[www.butlerandstag.uk](http://www.butlerandstag.uk)