



Cendal Crescent, London, E1

BUTLER & STAG



**Welcome to Bouchon Point, a charming Apartment located in the heart of Whitechapel, London. This property boasts a prime location in the Silk District E1, offering convenience and style to its residents.**

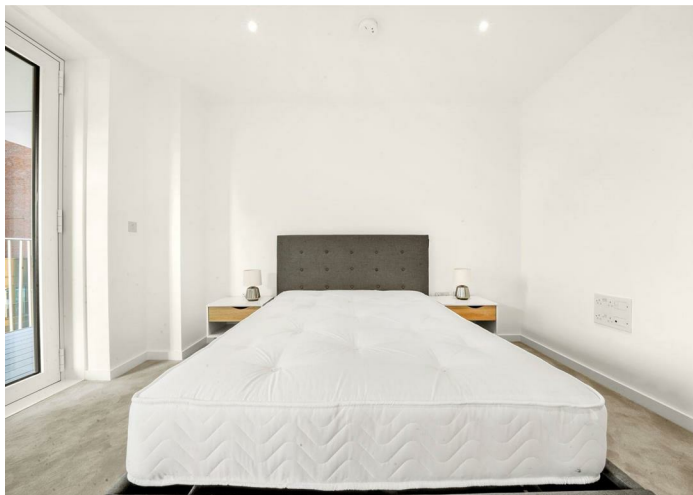


- One Double Bedroom
- Silk District
- Close to London Underground Station
- Communal Gardens
- Cinema Room
- Concierge Service
- Residents Gym
- Fitted Kitchen

Step inside this lovely Apartment to discover a cosy one-bedroom space that is perfect for a single professional or a couple looking for a comfortable home in the city. The property features modern amenities, including access to a residents cinema room, communal garden and a gym where you can stay active without leaving the comfort of your home.

One of the standout features of this property is the concierge service, adding a touch of luxury to your everyday life. Imagine coming home to a warm welcome and having your needs taken care of by the friendly concierge team.

Whether you're looking to rent a stylish urban retreat or seeking a convenient base in London, Bouchon Point offers the best of both worlds. Don't miss out on the opportunity to make this Apartment your new home in the vibrant Whitechapel neighbourhood.





IMPORTANT NOTICE - These particulars have been prepared in good faith and they are not intended to constitute part of an offer or contract. We have not performed a structural survey on this property and the services, appliances and specific fittings have not been tested. All photographs, measurements, floor plans and distances referred to are given as a guide and should not be relied upon.

A large, dark blue silhouette of a stag's head with prominent antlers, positioned on the right side of the page.

**BUTLER & STAG**

 **020 8102 1236**

 **508 Roman Road, Bow, London, E3 5LU**

 **bow@butlerandstag.com**

**[www.butlerandstag.uk](http://www.butlerandstag.uk)**