



Brady Street, London, E1

BUTLER & STAG



Set in a vibrant location in Whitechapel is this modern spacious apartment being just a short walk from Whitechapel Station, the street market and all the local amenities.



- One Bedroom
- Available 19th September 2024
- Modern Fitted Kitchen
- Large Double Bedroom
- Walking Distance to Whitechapel Station
- Premier Development
- Furnished
- Secure Entrance

Being set within a premier modern development is this one bed stunning apartment it is located within a short walk of Whitechapel Underground Station and the vibrant surrounding bars, cafes, and multi cultural restaurants.

The property benefits from a large open plan living area with light in abundance, a fully fitted modern kitchen, a modern bathroom suite and a double bedroom, the property is available from the 19th of September 2024.

The location is within the vibrant district of Whitechapel and within walking distance of Whitechapel Station and the surrounding bars, cafes, and restaurants.

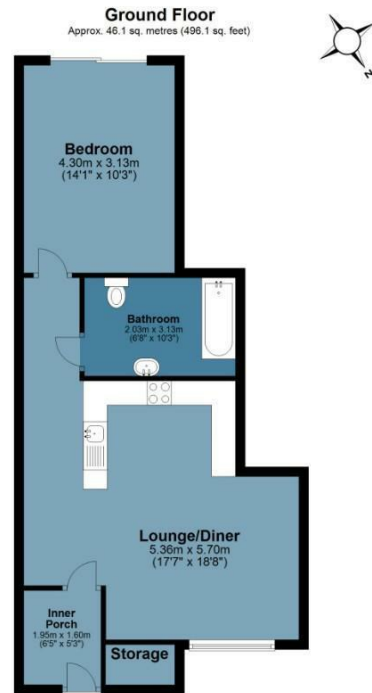




Brady Street

Approx. Gross Internal Area 46.1 Sq M (496.1 Sq Ft)

BUTLER & STAG



Floor plan is for illustrative purposes only and is not to scale. Every attempt has been made to ensure the accuracy of the floor plan shown, however all measurements, fixtures, fittings and data shown are an approximate interpretation for illustrative purposes only.

IMPORTANT NOTICE - These particulars have been prepared in good faith and they are not intended to constitute part of an offer or contract. We have not performed a structural survey on this property and the services, appliances and specific fittings have not been tested. All photographs, measurements, floor plans and distances referred to are given as a guide and should not be relied upon.

BUTLER & STAG

☎ 020 8102 1236

🏠 508 Roman Road, Bow, London, E3 5LU

✉ bow@butlerandstag.com

www.butlerandstag.uk