



Menai Place, London, E3

BUTLER & STAG



This delightful property boasts two bedrooms and two bathrooms, providing ample space for professionals looking for a convenient living arrangement. The secure parking and gated development ensure peace of mind and a sense of exclusivity for residents.



- Two Bedroom
- Secure Parking Space
- Great Location
- Modern Fitted Kitchen
- Gated Development
- Two Bathrooms
- Light and Open Living Space
- Furnished

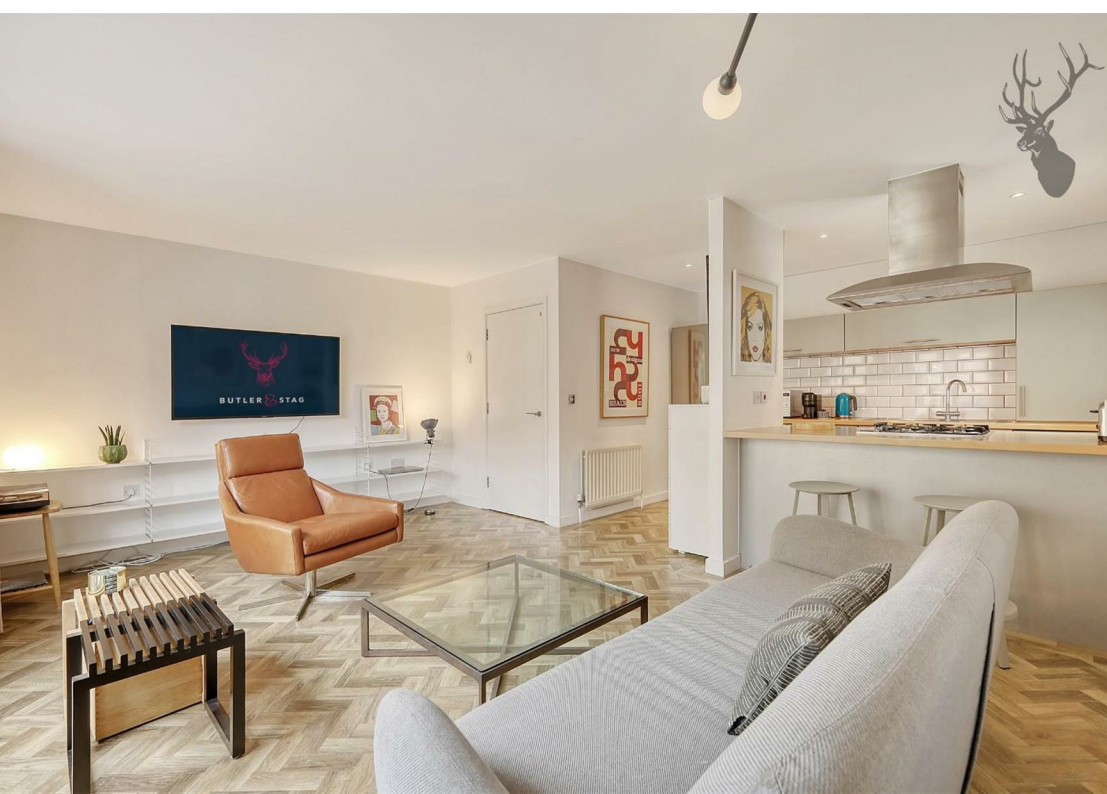
Welcome to Menai Place, a charming location in the heart of London where this delightful 2-bedroom, 2-bathroom apartment is waiting for you to call it home. Situated in a modern apartment block, this property offers a comfortable living space spanning 700 sq ft.

One of the standout features of this property is the convenience of car parking, ensuring you never have to worry about finding a spot after a long day out in the city. Whether you're a busy professional or a small family, this house provides the perfect blend of modern living in a bustling urban setting.

Located in a sought-after area, this rental property offers a fantastic opportunity to experience the vibrant lifestyle that London has to offer. With its prime location and contemporary amenities, this apartment is sure to appeal to those looking for a stylish and convenient place to live.

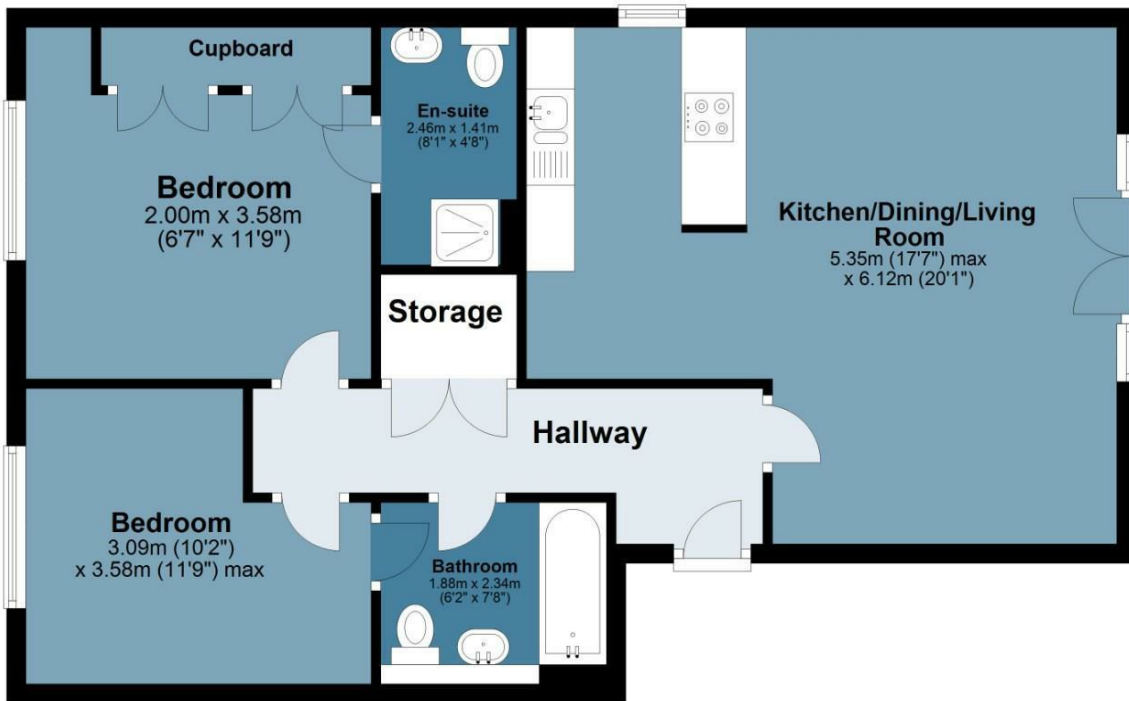
Don't miss out on the chance to make Menai Place your new address and experience the best of London living in this lovely 2-bedroom apartment. Contact us today to arrange a viewing and secure your spot in this desirable location.





First Floor

Approx. 69.3 sq. metres (745.5 sq. feet)



Total area: approx. 69.3 sq. metres (745.5 sq. feet)

Menai Place

IMPORTANT NOTICE - These particulars have been prepared in good faith and they are not intended to constitute part of an offer or contract. We have not performed a structural survey on this property and the services, appliances and specific fittings have not been tested. All photographs, measurements, floor plans and distances referred to are given as a guide and should not be relied upon.

BUTLER & STAG

☎ 020 8102 1236

🏠 508 Roman Road, Bow, London, E3 5LU

✉ bow@butlerandstag.com

www.butlerandstag.uk