



Bow Common Lane, London, E3

BUTLER & STAG



## Generously sized two bedroom apartment with outside space close to Mile End station & Victoria Park. Available now, please call to book a viewing!



- Two Bedrooms
- One Bathroom
- Walking Distance to Mile End
- Large garden
- Large storage cellar
- Close to Local Amenities
- Available 23rd August
- Period Conversion

The reception/kitchen comes with ample floor space, large windows providing a wealth of natural light, exposed brick, high ceilings, fully integrated appliances and a Smeg fridge. The bedrooms are of a good size. One features exposed brick, carpeted floors and access to the large cellar below the property which is perfect for storage. The larger bedroom is carpeted, has fitted wardrobes has access to the garden through. The second entrance to the garden area is through the hallway. The garden itself is almost the same size as the entire property, perfect for summer BBQs.

With a wealth of local amenities, the property is ideally situated close to Mile End Park, Victoria Park and Victoria Park Village. Mile End underground station (Central, District and Hammersmith & City) is a short walk away offering quick access to the city.

Available 23/08/2024



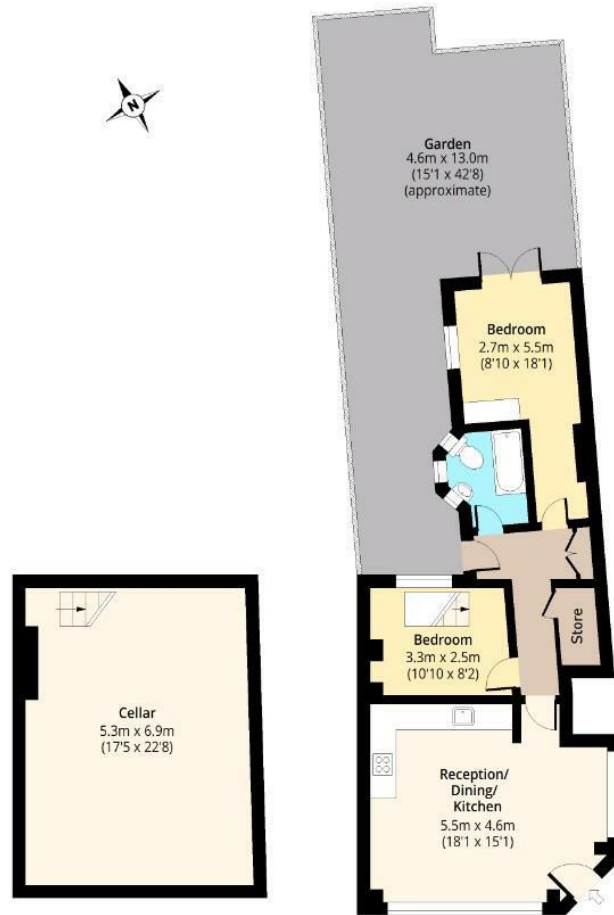


## Bow Common Lane, E3



**Cellar**  
Approx. 35.86 Sq. meters (386 Sq. feet)

**Ground Floor**  
Approx. 56.58 Sq. meters (609 Sq. feet)



Total area: approx. 92.44 Sq. meters (995 Sq. feet)  
For illustration purposes only - not to scale  
[www.jpaplus.com](http://www.jpaplus.com)

IMPORTANT NOTICE - These particulars have been prepared in good faith and they are not intended to constitute part of an offer or contract. We have not performed a structural survey on this property and the services, appliances and specific fittings have not been tested. All photographs, measurements, floor plans and distances referred to are given as a guide and should not be relied upon.

# BUTLER & STAG

☎ 020 8102 1236

🏠 508 Roman Road, Bow, London, E3 5LU

✉ [bow@butlerandstag.com](mailto:bow@butlerandstag.com)

[www.butlerandstag.uk](http://www.butlerandstag.uk)