



Cudworth Street, London, E1

BUTLER & STAG



**Welcome to this charming one-bedroom flat located on Cudworth Street in the heart of London. Situated in the vibrant area of Bethnal Green, this property offers a perfect blend of comfort and convenience.**



- One Bedroom
- Light Spacious Living Area
- Modern Bathroom
- Fitted Kitchen
- Available From 12th August
- Close to Bethnal Green Tube Station

As you step into this modern apartment, you are greeted by a cosy reception room that is perfect for relaxing. The property boasts a well-appointed bedroom, ideal for a good night's rest after a long day in the bustling city.

The flat features a sleek bathroom, adding a touch of luxury to your daily routine. With a total of 581 sq ft of living space, this apartment offers a comfortable and manageable layout for easy living.

Built in 2011, this property combines contemporary design with practicality, providing a stylish and functional living space. Its prime location in the E2 area of Bethnal Green means you are just a stone's throw away from excellent transport links, making it easy to explore all that London has to offer.

Don't miss out on the opportunity to make this lovely flat your new home. Contact us today to arrange a viewing and experience the convenience and charm of living in this desirable London location.

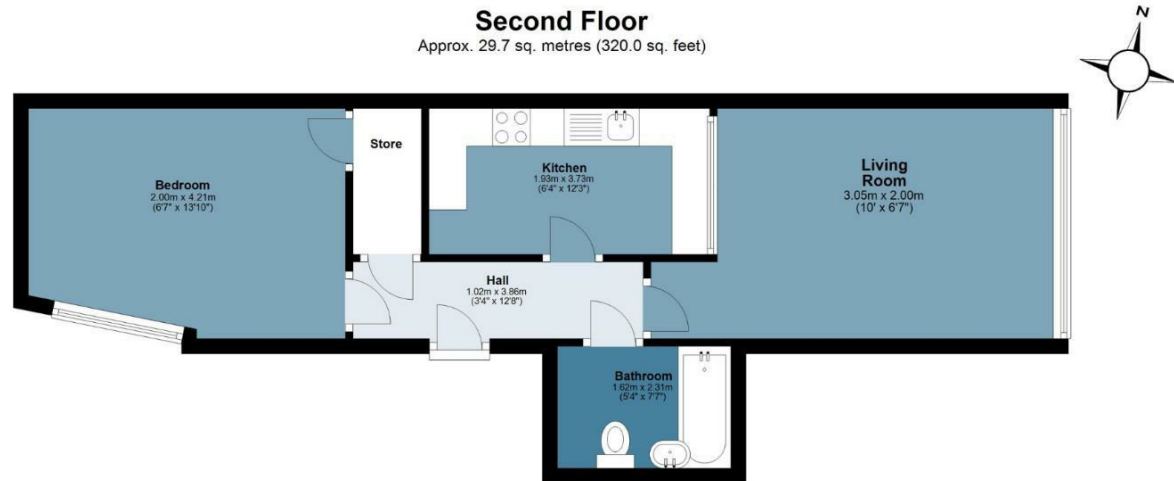




## Bookbinders Court

Approx. Gross Internal Area 29.7 sq. metres 320 sq. feet)

BUTLER & STAG



Measurements are approximate and for illustration purposes only. While we do not doubt the accuracy and completeness, we advise you conduct a careful independent assessment of the property to determine monetary value  
© @modephoto.uk www.modephoto.co.uk

BUTLER & STAG

☎ 020 8102 1236

🏠 508 Roman Road, Bow, London, E3 5LU

✉ bow@butlerandstag.com

IMPORTANT NOTICE - These particulars have been prepared in good faith and they are not intended to constitute part of an offer or contract. We have not performed a structural survey on this property and the services, appliances and specific fittings have not been tested. All photographs, measurements, floor plans and distances referred to are given as a guide and should not be relied upon.

www.butlerandstag.uk