



Usher Road, London, E3

BUTLER & STAG



Two Bedroom apartment located in a great location walking distance from Roman Road and all amenities including local transport.



- Long Term Let 24 Months
- Convenient Location
- Dual Aspect Living Room
- Two Bedroom Apartment
- Available 19th September
- Nicely Decorated
- Secure Gated Entrance
- Walking Distance to Roman Road

Excellent two bedroom apartment set within this purpose built modern development on Roman Road Market. Accessed off Usher Road the property sits on the first floor and boasts a dual aspect living room which is partly open plan to the fully fitted kitchen. There is a large double bedroom with fitted wardrobes and a smaller second bedroom, plus a three piece bathroom suite with wall mounted shower attachment.

Usher Road is a great little location allowing occupants to take advantage of the bustling market which operates on Tuesday, Thursday and Saturday and Roman Road which boasts some excellent cafe's, coffee shops and restaurants. It's a short stroll to Victoria Park whilst transport links can be found nearby at Mile End Station (Central, District and Hammersmith & City) and Bow Church DLR.

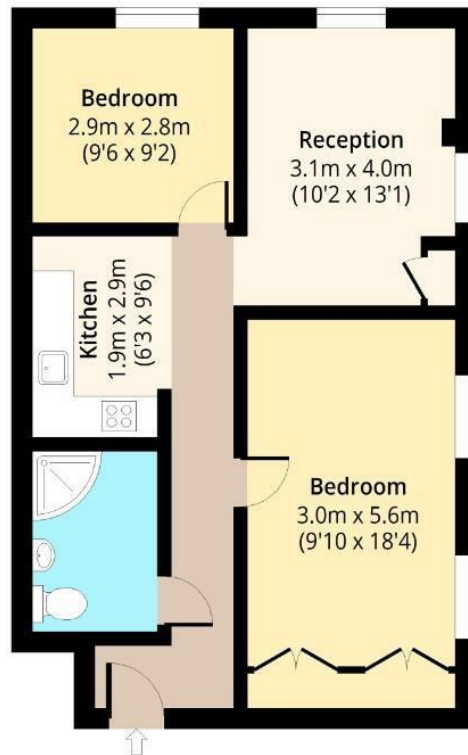




Usher Road, E3

First Floor

Approx. 58.81 Sq. meters (633 Sq. feet)



Total area: approx. 58.81 Sq. meters (633 Sq. feet)
For illustration purposes only - not to scale
www.lpaplus.com

BUTLER & STAG

☎ 020 8102 1236

🏠 508 Roman Road, Bow, London, E3 5LU

✉ bow@butlerandstag.com

www.butlerandstag.uk

IMPORTANT NOTICE - These particulars have been prepared in good faith and they are not intended to constitute part of an offer or contract. We have not performed a structural survey on this property and the services, appliances and specific fittings have not been tested. All photographs, measurements, floor plans and distances referred to are given as a guide and should not be relied upon.