



Killowen Road, London, E9

BUTLER & STAG



A fantastic Victorian period 5/6 bedroom home set in one of Hackney's premier roads close to Victoria Park and its surrounding amenities, available 21st of August.



- 5/6 Bedroom
- Two Kitchens
- Two Bathrooms
- Rear Garden
- Close to Victoria Park
- Available 21st of August
- Four Floors
- Sharers Accepted
- Period Property
- Walking Distance to Transport

Offered to the market is this impressive 5/6 bedroom Victorian Period Home that is located in one of Hackney's premier roads.

Comprising of 5/6 bedrooms, a study, 2 kitchens, 2 bathrooms, a conservatory, large living area, a rear garden and all over 4 floors of this glorious home.

Located close to Victoria Park and the vibrant Victoria Park Village the location benefits from good transport connections and a lifestyle of diversity.

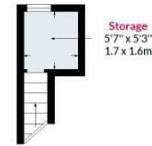
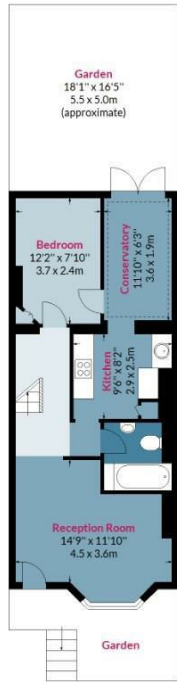




Killowen Road, E9

Approx. Gross Internal Area 1565 Sq Ft - 145.39 Sq M

BUTLER & STAG



Floor plan is for illustrative purposes only and is not to scale. Every attempt has been made to ensure the accuracy of the floor plan shown, however all measurements, fixtures, fittings and data shown are an approximate interpretation for illustrative purposes only.
lpaplus.com

BUTLER & STAG

☎ 020 8102 1236

🏠 508 Roman Road, Bow, London, E3 5LU

✉ bow@butlerandstag.com

IMPORTANT NOTICE - These particulars have been prepared in good faith and they are not intended to constitute part of an offer or contract. We have not performed a structural survey on this property and the services, appliances and specific fittings have not been tested. All photographs, measurements, floor plans and distances referred to are given as a guide and should not be relied upon.

www.butlerandstag.uk