



Tredegar Road, London, E3

BUTLER & STAG



**Located close to Roman Road and a walk to Victoria Park is this charming two bedroom split level apartment benefiting from its own garden, available 14th of August 2024.**



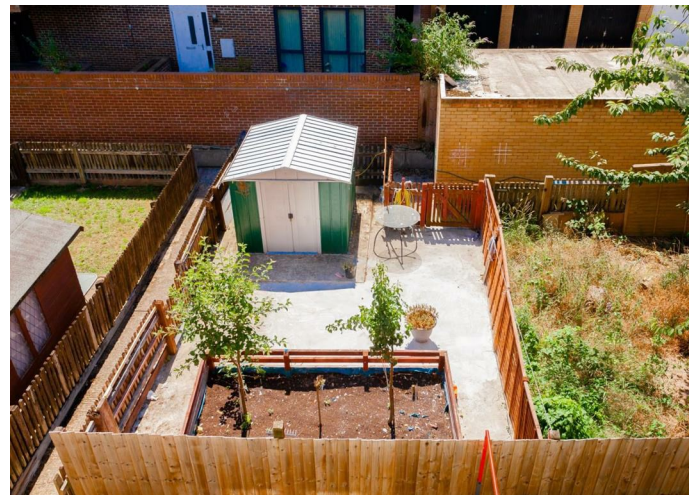
- Two Bedroom
- Available 14th August
- Part Furnished
- Mile End Station Nearby
- Split Level
- Private Garden
- Close To Roman Road
- Close To Transport

Situated close to the East End's iconic market Roman Road and a walk to Victoria Park is this split level maisonette.

The Property consists of two double bedrooms and a fitted bathroom on the second floor, whilst on the first floor there is a light spacious and airy living area with a fitted kitchen.

The apartment also benefits from a private garden to the rear making this a very desirable property. It is within walking distance of Mile End Station and all local amenities that this vibrant area has to offer.

Available 14th of August 2024.





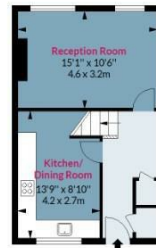
## Stavers House, Tredegar Road, E3

Approx. Gross Internal Area 742 Sq Ft - 68.93 Sq M

BUTLER & STAG

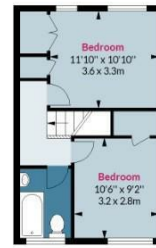


Ground Floor



First Floor

Floor Area 371 Sq Ft - 34.47 Sq M



Second Floor

Floor Area 371 Sq Ft - 34.47 Sq M

Floor plan is for illustrative purposes only and is not to scale. Every attempt has been made to ensure the accuracy of the floor plan shown, however all measurements, fixtures, fittings and data shown are an approximate interpretation for illustrative purposes only.  
lpaplus.com

BUTLER & STAG

☎ 020 8102 1236

🏠 508 Roman Road, Bow, London, E3 5LU

✉ bow@butlerandstag.com

IMPORTANT NOTICE - These particulars have been prepared in good faith and they are not intended to constitute part of an offer or contract. We have not performed a structural survey on this property and the services, appliances and specific fittings have not been tested. All photographs, measurements, floor plans and distances referred to are given as a guide and should not be relied upon.

www.butlerandstag.uk