



Coopers Close, London, E1

BUTLER & STAG



Situated in a peaceful cul-de-sac in the heart of Stepney Green, this studio flat presents an exciting opportunity for those looking to put their personal touch on a property. With a long lease and ample potential, this flat is perfect for first-time buyers and investors.



Leasehold - Share of



- Studio Flat
- Close To Whitechapel Station
- Close To Amenities
- 900+ Lease Length
- Allocated Parking
- Cul-De-Sac
- Quiet Location
- Chain Free

Key Features

Living Area: A well-proportioned open-plan space with the potential for a comfortable living and sleeping area.

Kitchen: Basic kitchen area, offering a blank canvas for a contemporary upgrade.

Bathroom: Functional bathroom, ready for modern fixtures and fittings. **Windows:** Generous windows that provide good natural light, with scope for updating to improve insulation and efficiency.

Location

Stepney Green: A desirable area known for its rich history and vibrant community atmosphere.

Transport Links: Conveniently located near Stepney Green Underground Station, offering easy access to Central London and beyond.

Local Amenities: Close to local shops, cafes, restaurants, and parks, including the picturesque Stepney Green Park.

Additional Information

Lease: Long lease, providing a secure investment for the future.

Community: Situated in a friendly neighborhood, ideal for those seeking a community-oriented environment.

Potential

This studio flat is perfect for buyers with a vision. With some modernisation, it can be transformed into a stylish and contemporary living space, increasing its value and appeal.





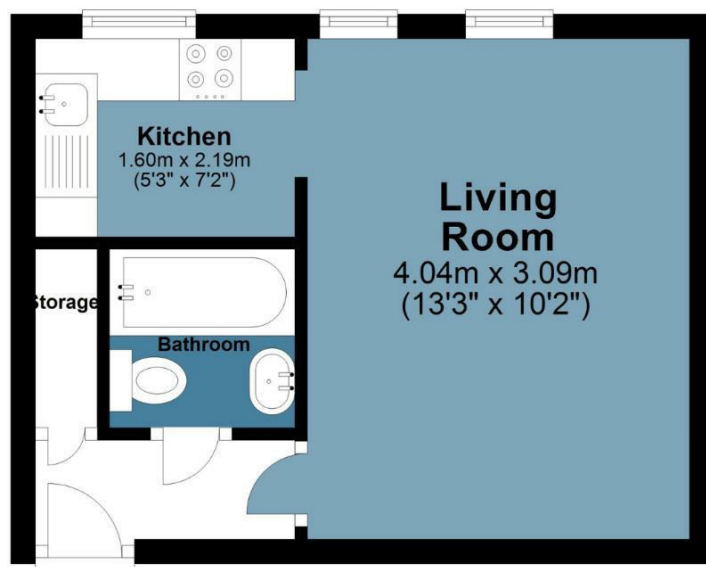
Coopers Close

Approx. Gross Internal Area 21.9 sq. metres (235.6 sq. feet)

BUTLER & STAG

Ground Floor

Approx. 21.9 sq. metres (235.6 sq. feet)



Measurements are approximate and for illustration purposes only. While we do not doubt the accuracy and completeness, we advise you conduct a careful independent assessment of the property to determine monetary value
© @modephotouk www.modephoto.co.uk

BUTLER & STAG

☎ 020 8102 1236

🏠 508 Roman Road, Bow, London, E3 5LU

✉ bow@butlerandstag.com

IMPORTANT NOTICE - These particulars have been prepared in good faith and they are not intended to constitute part of an offer or contract. We have not performed a structural survey on this property and the services, appliances and specific fittings have not been tested. All photographs, measurements, floor plans and distances referred to are given as a guide and should not be relied upon.

www.butlerandstag.uk