



Mile End Road, London, E1

BUTLER & STAG



Welcome to urban luxury at The Chronos Building, where contemporary design meets unparalleled convenience. Nestled in the heart of Whitechapel, this two-bedroom apartment offers a stylish retreat in one of London's most vibrant neighbourhoods.



Leasehold - Share of

- First Floor Apartment
- Share Of Freehold
- Secure Underground Parking Space
- Chain Free
- Whitechapel Tube Station A Moments Walk Away (Queen Elizabeth Line)
- 639 Sq/Ft Internal Living Accomodation
- Private South Facing Balcony
- Two Bedrooms

Upon entering, you're greeted by an open-plan living space adorned with sleek, minimalist decor and expansive windows that flood the rooms with natural light. The living area seamlessly blends with a state-of-the-art kitchen featuring high-end appliances, sleek countertops, and ample storage space, perfect for entertaining guests.

The principal bedroom exudes tranquility with its spacious layout and plush carpeting. The second bedroom is equally inviting, ideal for guests or as a comfortable home office.

Located just moments away from Whitechapel Station, commuting is a breeze, whether you're headed to work in the City or exploring the vibrant markets and cultural hotspots that define the area. With a plethora of trendy cafes, fine dining establishments, and shopping boutiques at your doorstep, The Chronos Building offers a lifestyle that effortlessly combines modern luxury with urban convenience.

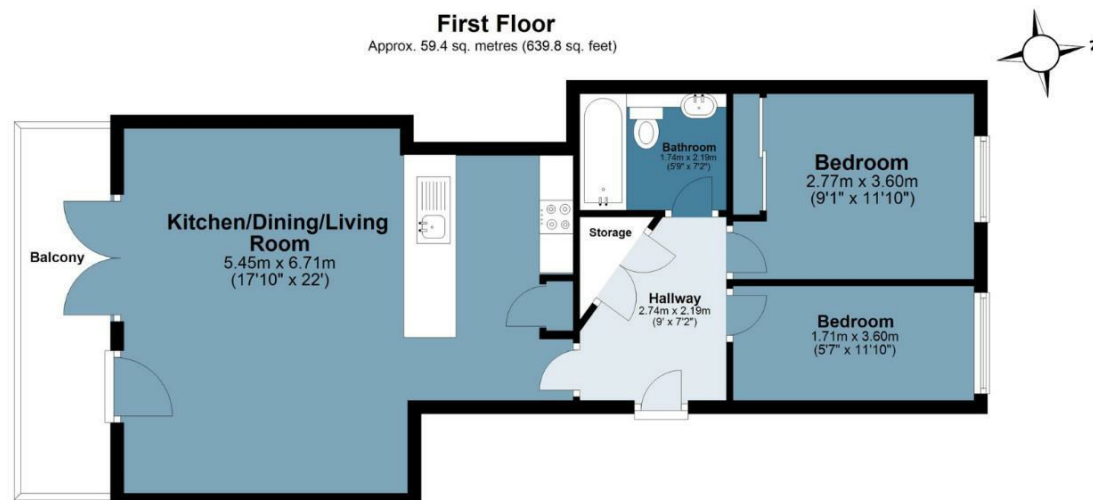




Mile End Road

Approx. Gross Internal Area 59.4 sq. metres (639.8 sq. feet)

BUTLER & STAG



Measurements are approximate and for illustration purposes only. While we do not doubt the accuracy and completeness, we advise you conduct a careful independent assessment of the property to determine monetary value
© @modephoto.uk www.modephoto.co.uk

IMPORTANT NOTICE - These particulars have been prepared in good faith and they are not intended to constitute part of an offer or contract. We have not performed a structural survey on this property and the services, appliances and specific fittings have not been tested. All photographs, measurements, floor plans and distances referred to are given as a guide and should not be relied upon.

BUTLER & STAG

☎ 020 8102 1236

🏠 508 Roman Road, Bow, London, E3 5LU

✉ bow@butlerandstag.com

www.butlerandstag.uk