



Hoxton Square, London, N1

BUTLER & STAG



**Welcome to your contemporary urban retreat in the heart of Hoxton Square, where style meets convenience. This spacious 2-bedroom apartment offers the perfect blend of modern living and vibrant city life.**



## Leasehold

- Modern Development
- Two Bathrooms
- Iconic Hoxton Square On Your Door Step
- Old Spitalfields Market Close By
- Two Bedrooms
- 707 Sq/Ft Internal Living Space
- Old Street Station A Moments Walk Way
- Chain Free

Situated in the trendy Hoxton Square, known for its artistic vibe and eclectic dining scene. You'll be surrounded by cafes, galleries, and boutiques, with easy access to Shoreditch and Old Street.

The apartment boasts a sleek, modern design with high ceilings and large windows that flood the space with natural light. The open-plan living area is perfect for entertaining or relaxing, featuring a fully equipped kitchen with modern appliances and a stylish dining area.

There are two spacious bedrooms each offering comfort and ample storage space. Perfect for individuals and couples.

Excellent transport links with Old Street station nearby, connecting you to the rest of London via the Northern line and Overground services.

Experience the vibrant Hoxton Square with its buzzing nightlife, cultural hotspots, and a variety of dining options ranging from casual eateries to fine dining establishments.

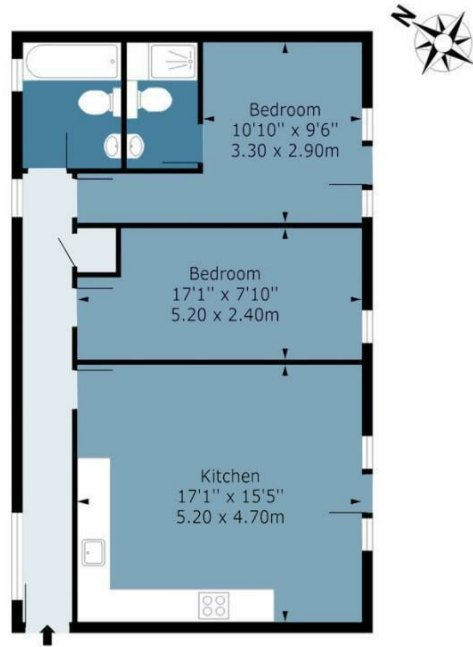




## Hoxton Square

Approx. Gross Internal Area 65.68 Sq M ( 707 Sq Ft )

BUTLER & STAG



First Floor

Measurements are approximate and for illustration purposes only. While we do not doubt the accuracy and completeness, we advise you conduct a careful independent assessment of the property to determine monetary value.  
© @modephotouk www.modephoto.co.uk

BUTLER & STAG

☎ 020 8102 1236

🏠 508 Roman Road, Bow, London, E3 5LU

✉ bow@butlerandstag.com

[www.butlerandstag.uk](http://www.butlerandstag.uk)

IMPORTANT NOTICE - These particulars have been prepared in good faith and they are not intended to constitute part of an offer or contract. We have not performed a structural survey on this property and the services, appliances and specific fittings have not been tested. All photographs, measurements, floor plans and distances referred to are given as a guide and should not be relied upon.