



Wrights Road, London, E3

BUTLER & STAG



**Guide Price - £375,000 to £425,000**  
**Nestled in the vibrant heart of Bow, this charming two-bedroom ex-local authority ground-floor duplex flat offers a blend of urban & convenience. Perfectly positioned near the picturesque Victoria Park, this property promises a convenient and enjoyable lifestyle in one of East London's most sought-after neighborhoods.**



## Leasehold

- Two Double Bedrooms
- Duplex Apartment
- Close To Victoria Park
- Duel Aspect
- EWS1 Compliant
- Close to Amenities

Upon entering this delightful duplex flat, you are greeted by a welcoming hallway leading to the bright and airy living room, which serves as the heart of the home. The kitchen offers a practical and stylish space for culinary creations.

Ascending to the upper level, you will find two well-proportioned bedrooms, each offering a peaceful retreat from the hustle and bustle of city life. The bathroom is conveniently located to serve both bedrooms.

The flat's proximity to Victoria Park, known for its beautiful landscapes and recreational facilities, adds immense value, making it a perfect choice for nature lovers and families alike. Additionally, the excellent transport links and a plethora of local amenities ensure a convenient and vibrant lifestyle.

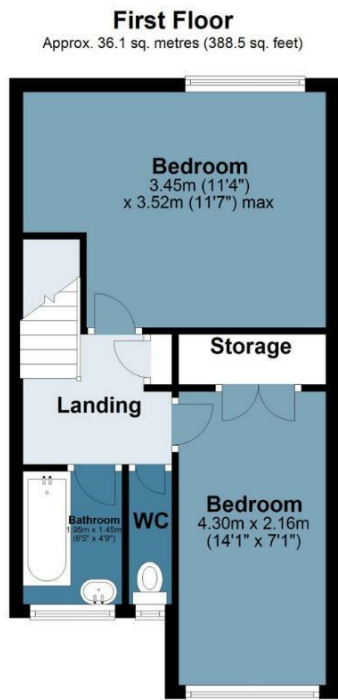
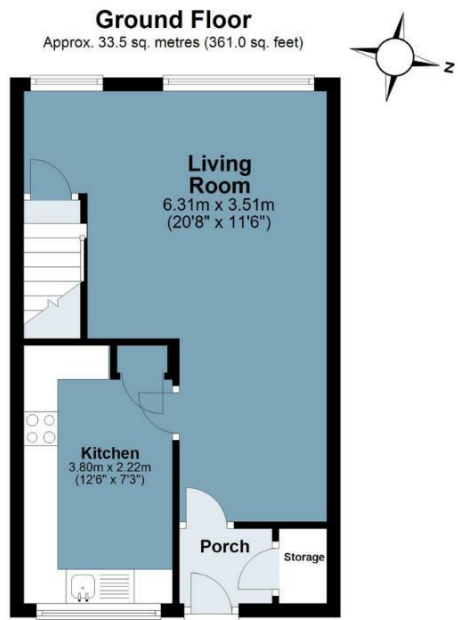
This two-bedroom ex-local ground floor duplex flat in Bow is an exceptional opportunity for those seeking a comfortable and stylish home in a prime East London location. With its amenities, and close proximity to Victoria Park, it offers the perfect balance of urban living and natural tranquility.





# Mckenna House

Approx. Gross Internal Area 69.6 sq. metres (749.5 sq. feet)



Measurements are approximate and for illustration purposes only. While we do not doubt the accuracy and completeness, we advise you conduct a careful independent assessment of the property to determine monetary value  
© @modephotouk www.modephoto.co.uk



☎ 020 8102 1236

🏠 508 Roman Road, Bow, London, E3 5LU

✉ bow@butlerandstag.com

[www.butlerandstag.uk](http://www.butlerandstag.uk)

IMPORTANT NOTICE - These particulars have been prepared in good faith and they are not intended to constitute part of an offer or contract. We have not performed a structural survey on this property and the services, appliances and specific fittings have not been tested. All photographs, measurements, floor plans and distances referred to are given as a guide and should not be relied upon.