



St. Pauls Way, London, E3

BUTLER & STAG



Discover the epitome of modern living in this exquisite **Three-bedroom, two-bathroom split-level apartment** located in the heart of Bow. This stunning **ground floor and lower ground floor apartment** spans over **1100 square feet** and features **two private courtyards**, offering ample outdoor space and a **unique blend of style and comfort.**



Leasehold

- Duplex Apartment
- Two Bathrooms
- Private Courtyard
- Modern Finish
- Spanning Over 1100 Sq. ft.
- EWS1 Compliant
- Three Bedrooms

Prime Location: Nestled in the vibrant Bow area, this apartment provides easy access to a wide range of local amenities, including trendy cafes, diverse restaurants, boutique shops, and lush parks. Excellent transport links ensure quick and convenient travel across London.

Split-Level Design: The innovative split-level layout enhances the sense of space and privacy, with distinct areas for living, dining, and sleeping.

Modern Interiors: The apartment features contemporary interiors with high-quality finishes. The open-plan design ensures a seamless flow between the living, dining, and kitchen areas.

Three Bedrooms: All bedrooms are generously sized, with large windows that let in plenty of natural light. The master bedroom includes an en-suite bathroom for added convenience.

Two Bathrooms: In addition to the master en-suite, there is a second modern bathroom, both equipped with stylish fittings and fixtures.

Bow is renowned for its historical charm and vibrant community. Residents enjoy proximity to green spaces like Victoria Park and the Olympic Park, as well as a variety of local markets and cultural attractions. The area is well-served by public transport, including the Bow Road Underground Station and several bus routes, facilitating easy commutes to Central London and beyond.

This three-bedroom, two-bathroom split-level apartment in Bow offers a rare combination of modern luxury, spacious living, and private outdoor areas. With its prime location, contemporary design, and extensive amenities, it presents an exceptional opportunity for those seeking a stylish and comfortable home in one of London's most sought-after neighborhoods. Don't miss the chance to make this remarkable property your own.

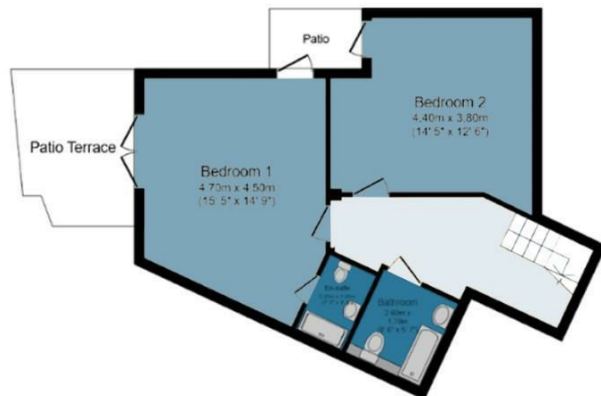




Flat G01, Sphere Apartments

Approx. Gross Internal Area 104 Sq M (1119 Sq Ft)

BUTLER & STAG



Lower Ground Floor



Ground Floor

Measurements are approximate and for illustration purposes only. While we do not doubt the accuracy and completeness, we advise you conduct a careful independent assessment of the property to determine monetary value.
© @modephotouk www.modephoto.co.uk

IMPORTANT NOTICE - These particulars have been prepared in good faith and they are not intended to constitute part of an offer or contract. We have not performed a structural survey on this property and the services, appliances and specific fittings have not been tested. All photographs, measurements, floor plans and distances referred to are given as a guide and should not be relied upon.

BUTLER & STAG

☎ 020 8102 1236

🏠 508 Roman Road, Bow, London, E3 5LU

✉ bow@butlerandstag.com

www.butlerandstag.uk