



Old Ford Road, London, E3

BUTLER & STAG



**Guide Price £400,000 - £425,000**  
**Nestled in the vibrant neighbourhood of Bow on the fringe of the award winning Victoria Park, this stunning warehouse conversion offers a unique blend of contemporary living and industrial charm. This one-bedroom apartment embodies the essence of modern urban living while preserving the character of its industrial heritage.**



## Leasehold

- Warehouse Conversion
- One Bedroom
- Victoria Park On Your Door Step
- Historical Roman Road Market Close By
- Exposed Brick Work / Double Height Ceilings
- Offered Chain Free
- First Floor Apartment
- Mile End And Bow Road Tube Stations A Short Walk Away

Upon entering, you're greeted by an expansive living space characterized by soaring ceilings, exposed brick walls, and large factory-style windows that flood the interior with natural light, creating a bright and airy ambiance. The open-plan layout seamlessly integrates the living, dining, and kitchen areas, providing the perfect setting for entertaining guests or enjoying quiet evenings at home.

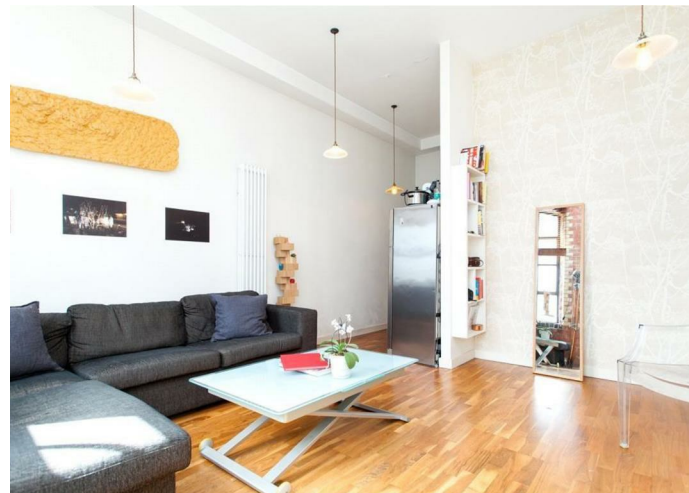
The stylish kitchen boasts sleek cabinetry, premium appliances, and ample counter space.

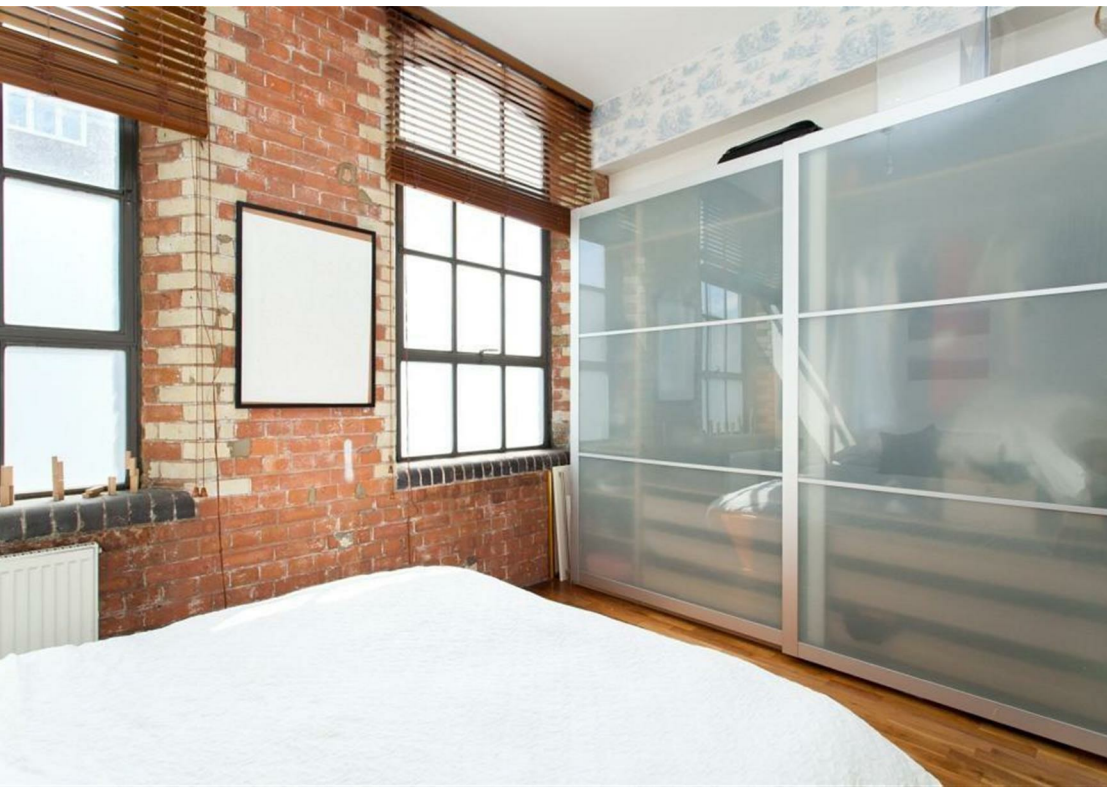
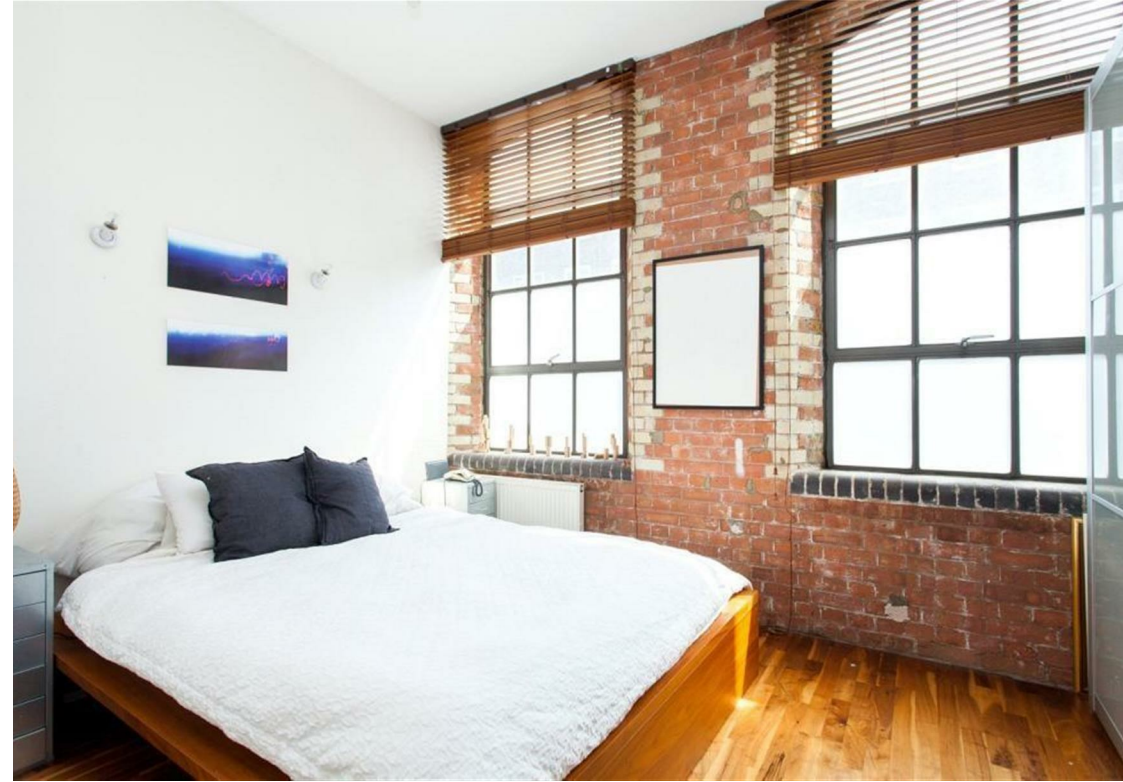
The apartment features a generously sized bedroom, offering comfort and privacy.

Connaught Works also offers residents access to a range of amenities, including a communal courtyard, secure entry system, and bicycle storage, enhancing convenience and security.

Beyond the walls of this exceptional apartment, you'll find an array of amenities and attractions right at your doorstep. From trendy cafes and artisanal eateries to boutique shops and cultural venues, E3 offers an eclectic mix of experiences to suit every taste and interest. With excellent transport links nearby, including Mile End and Bow Road Underground stations, as well as numerous bus routes, exploring the rest of London is effortless.

Experience the best of East London living at Connaught Works – where industrial heritage meets contemporary luxury. Don't miss your chance to call this exceptional apartment home.

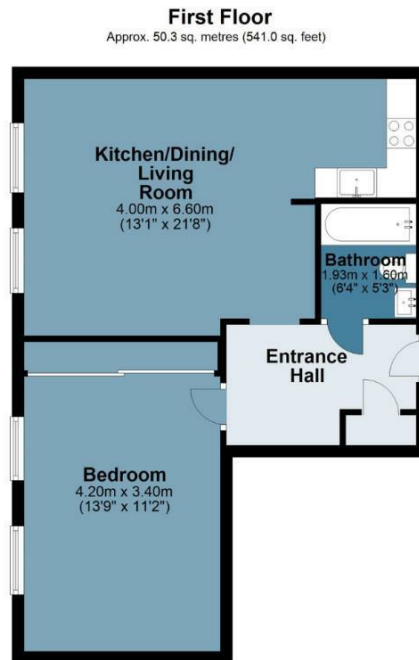




## Old Ford E3

Approx. Gross Internal Area 50.3 sq. metres 541 sq. feet)

**BUTLER & STAG**



Measurements are approximate and for illustration purposes only. While we do not doubt the accuracy and completeness, we advise you conduct a careful independent assessment of the property to determine monetary value  
© @modephotouk www.modephoto.co.uk

**BUTLER & STAG**

☎ 020 8102 1236

🏠 508 Roman Road, Bow, London, E3 5LU

✉ bow@butlerandstag.com

[www.butlerandstag.uk](http://www.butlerandstag.uk)

IMPORTANT NOTICE - These particulars have been prepared in good faith and they are not intended to constitute part of an offer or contract. We have not performed a structural survey on this property and the services, appliances and specific fittings have not been tested. All photographs, measurements, floor plans and distances referred to are given as a guide and should not be relied upon.