



747 Commercial Road, London, E14

BUTLER & STAG



Large 700 sq ft two bedroom apartment in the Mission Building. A grade II listed building formerly known as the Empire Memorial Sailors' Hostel. Water rates included in the rental price!



- Two bedrooms
- Furnished/unfurnished
- Residents BBQ
- Water rates included!
- Council Tax Band C
- One bathroom
- Communal garden
- Small-scale gym
- Portage

Comprising of a fully integrated kitchen, open plan to a large reception. Both bedrooms are almost identical in size and feature fitted wardrobes. Meaning its perfect for sharers! There is also ample storage near the entrance.

The Mission Building is a secure development with phone-operated entry system, lift access, communal garden with a residents BBQ, a large roof terrace with panoramic views of London and cycle stores. There's also an internal small-scale gym that's exclusive to tenants and a porter working Monday to Friday.

Located within walking distance of Limehouse DLR station and just a short walk to the Limehouse Cut canal. Offering quick access to the City and Canary Wharf.

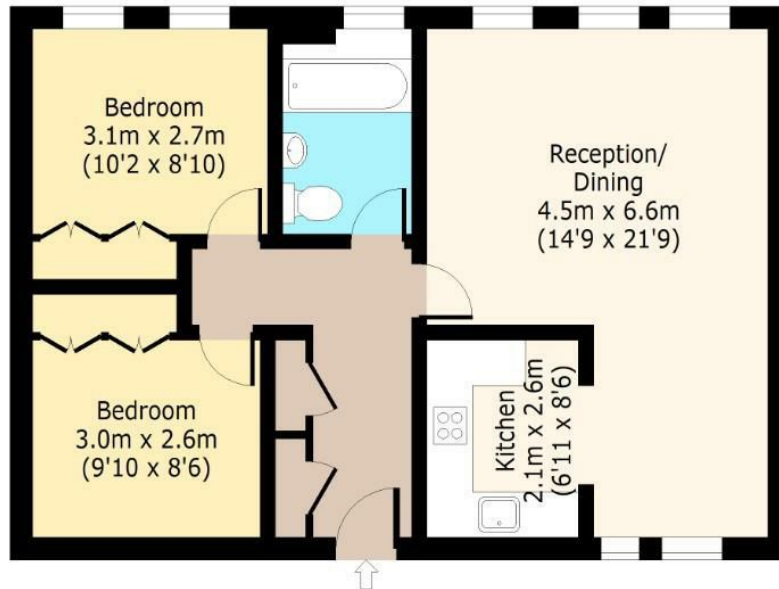




The Mission Building, Commercial Road, E14

Second Floor

Approx. 65.03 Sq. meters (700 Sq. feet)



Total area: approx. 65.03 Sq. meters (700 Sq. feet)

For illustration purposes only - not to scale

www.lpaplus.com

BUTLER & STAG

☎ 020 8102 1236

🏠 508 Roman Road, Bow, London, E3 5LU

✉ bow@butlerandstag.com

www.butlerandstag.uk

IMPORTANT NOTICE - These particulars have been prepared in good faith and they are not intended to constitute part of an offer or contract. We have not performed a structural survey on this property and the services, appliances and specific fittings have not been tested. All photographs, measurements, floor plans and distances referred to are given as a guide and should not be relied upon.