



Ordell Road, London, E3

BUTLER & STAG



Price Guide £350,000 - £375,000
Welcome to contemporary urban living at Ordell Court in Bow. This stylish one bedroom, first floor apartment offers a perfect blend of comfort, convenience, and sophistication, ideal for modern city dwellers seeking a vibrant lifestyle.



Leasehold

- Secure Allocated Parking
- First Floor Apartment
- One Bedroom
- Historical Roman Road Market and Victoria Park Close By
- Juliette Balcony
- Secure Entry System
- Chain Free
- Bow Road / Mile End And Bow Church Stations A Moments Walk Away

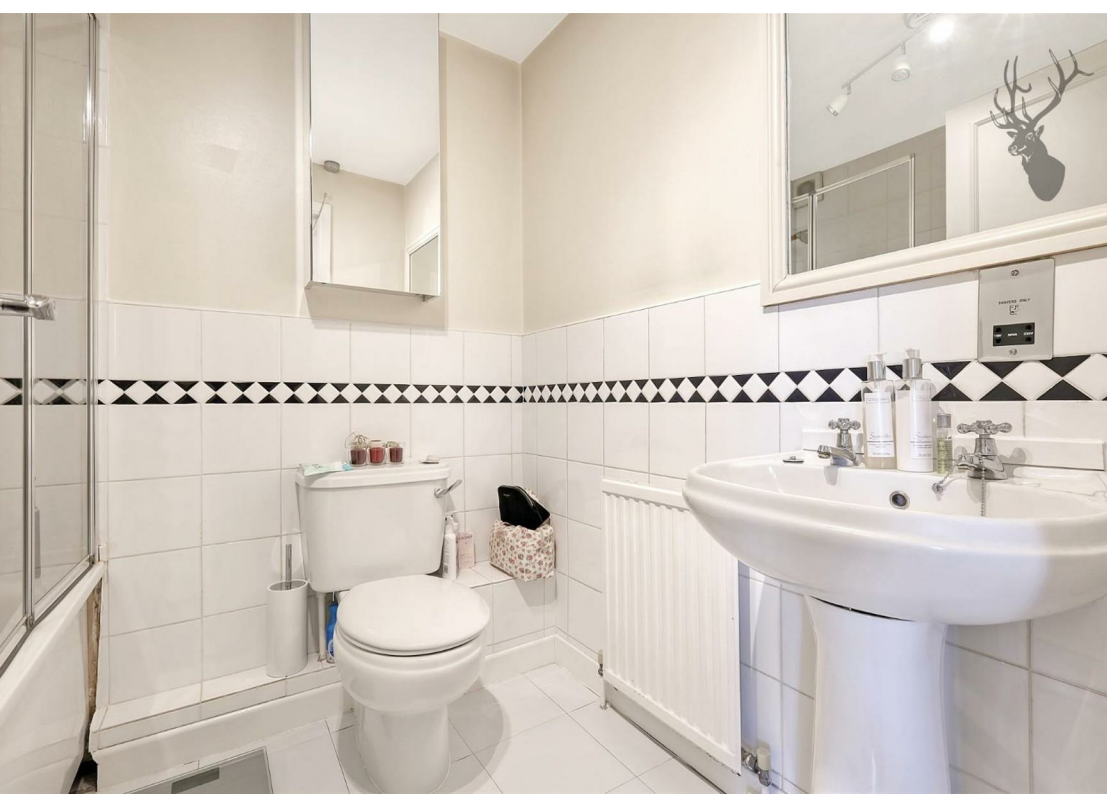
Located in the heart of Bow, Ordell Court enjoys proximity to an array of amenities, making it a prime choice for those who crave convenience. Roman Road is a moments walk away where the streets are lined with trendy cafes, diverse restaurants, and eclectic shops. With excellent transport links including Bow Road and Mile End stations nearby, commuting to Central London and beyond is effortless.

This apartment boasts sleek modern interiors. The open-plan living space is bathed in natural light, creating a welcoming ambiance. The fully-equipped kitchen features premium appliances and ample storage and counter space.

The well-appointed bedroom offers ample space.

Discover the perfect balance of urban convenience and contemporary comfort at Ordell Court. With its prime location, stylish interiors, and an array of amenities.

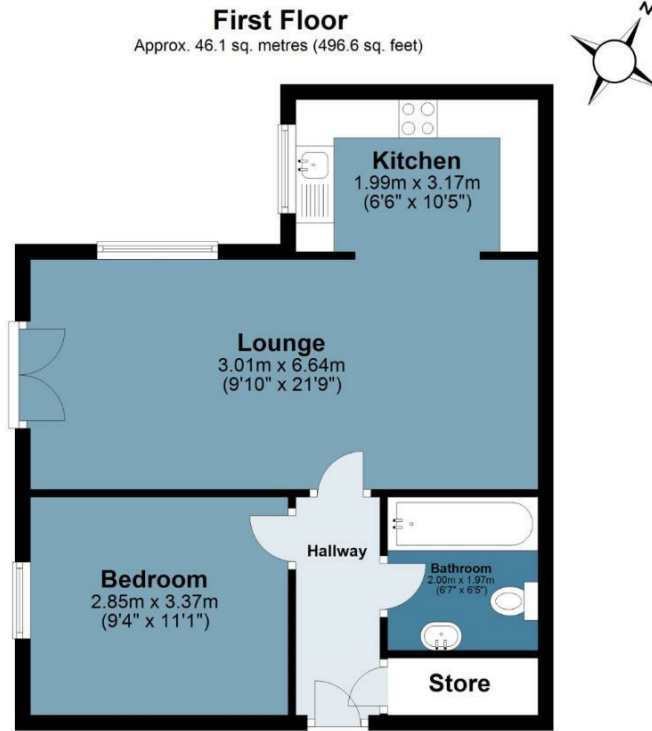




Ordell Court

Approx. Gross Internal Area 4601 sq. metres (496.6 sq. feet)

BUTLER & STAG



Measurements are approximate and for illustration purposes only. While we do not doubt the accuracy and completeness, we advise you conduct a careful independent assessment of the property to determine monetary value
© @modephoto.uk www.modephoto.co.uk

BUTLER & STAG

☎ 020 8102 1236

🏠 508 Roman Road, Bow, London, E3 5LU

✉ bow@butlerandstag.com

www.butlerandstag.uk

IMPORTANT NOTICE - These particulars have been prepared in good faith and they are not intended to constitute part of an offer or contract. We have not performed a structural survey on this property and the services, appliances and specific fittings have not been tested. All photographs, measurements, floor plans and distances referred to are given as a guide and should not be relied upon.