



Gopsall Street, London, N1

BUTLER & STAG



**Guide Price £600,000 - £650,000**  
**Perched atop Mawson Court in the vibrant heart of Hoxton, this top-floor gem offers a haven of modern living with breath-taking views overlooking the lush expanse of Shoreditch Park. Step into a world where contemporary design meets urban elegance, where every detail is crafted to elevate your lifestyle.**



## Leasehold

- Top Floor Apartment
- 827 Sq/Ft Internal Living Space
- Panoramic Views of Shoreditch Park
- Secure Allocated Parking
- Polished Cork Flooring / Modern Interiors
- Two Generous Sized Bedrooms
- EWS1 Compliant
- Hoxton Station Close By

Upon entering this stylish two-bedroom apartment, you're greeted by an abundance of natural light cascading through expansive windows, illuminating the spacious open-plan living area. The seamless fusion of polished cork flooring and neutral tones creates an inviting ambiance, perfect for both relaxation and entertainment.

The living space seamlessly transitions into the kitchen, equipped with fitted appliances and ample countertop space.

As you wander through the flat, you'll discover two generously sized bedrooms, each offering a tranquil retreat.

Step outside onto the private balcony, where panoramic views of Shoreditch Park unfold before you.

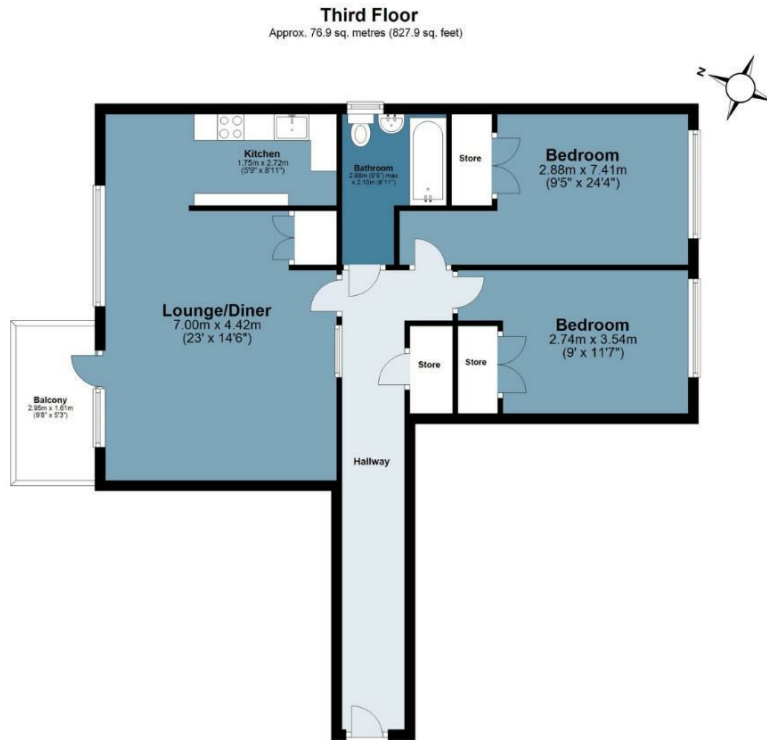
With its prime location in Hoxton, residents of Mawson Court enjoy easy access to an array of trendy cafes, eclectic boutiques, and world-class dining options. Explore the vibrant street art of Shoreditch, soak up the cultural energy of Brick Lane, or simply take a leisurely stroll through the park.





# Mawson Court

Approx. Gross Internal Area 76.9 sq. metres (827.9 sq. feet)



Measurements are approximate and for illustration purposes only. While we do not doubt the accuracy and completeness, we advise you conduct a careful independent assessment of the property to determine monetary value  
© @modephoto.uk www.modephoto.co.uk



📞 020 8102 1236

🏠 508 Roman Road, Bow, London, E3 5LU

✉ bow@butlerandstag.com

[www.butlerandstag.uk](http://www.butlerandstag.uk)

IMPORTANT NOTICE - These particulars have been prepared in good faith and they are not intended to constitute part of an offer or contract. We have not performed a structural survey on this property and the services, appliances and specific fittings have not been tested. All photographs, measurements, floor plans and distances referred to are given as a guide and should not be relied upon.