



Royal Crest Avenue, London, E16

BUTLER & STAG



located in the heart of London's Royal Docks development is this stylish two bedroom, two bathroom modern contemporary furnished apartment.



- Two Double Bedrooms
- Gym
- Furnished
- Waterside Living
- 24hr Concierge
- Swimming Pool and Spa
- Available Now
- Two Bathrooms

Available now is this spectacular two-bedroom apartment in the heart of the newly built Riverscape development, E16.

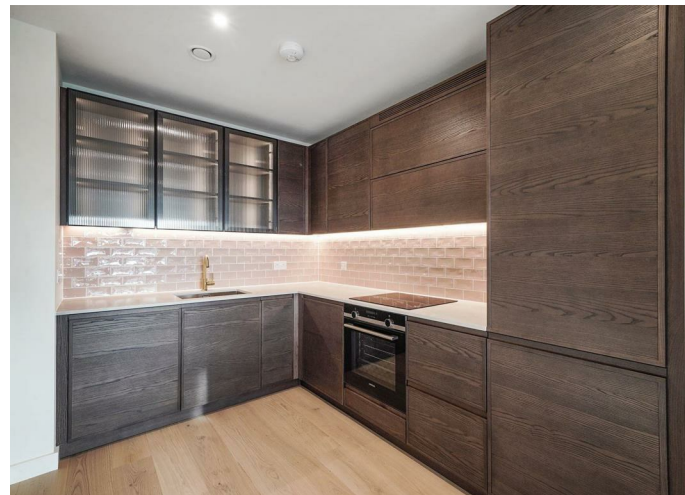
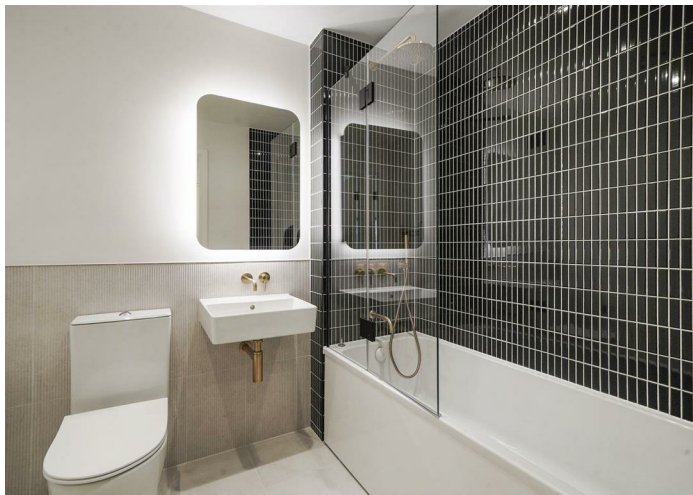
The property comprises two double bedrooms, an open concept living area with a large, fully fitted kitchen and two spacious bathrooms. The apartments benefits from 2 private balconies.

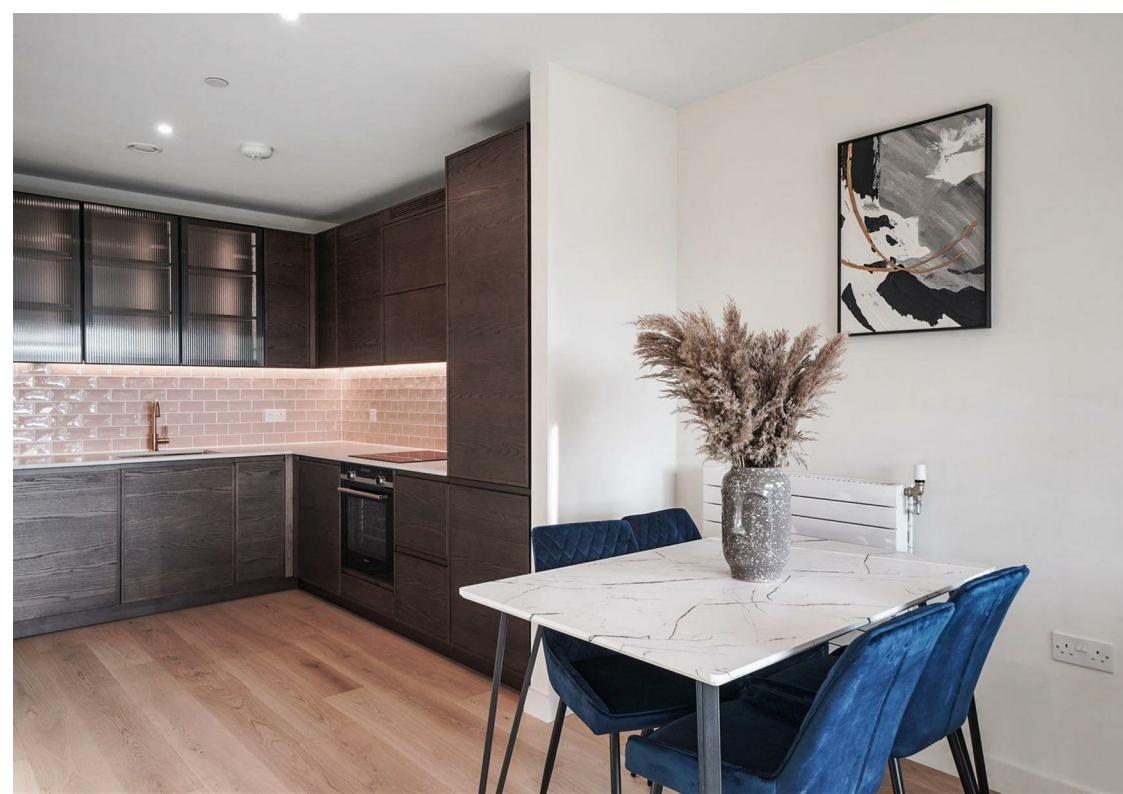
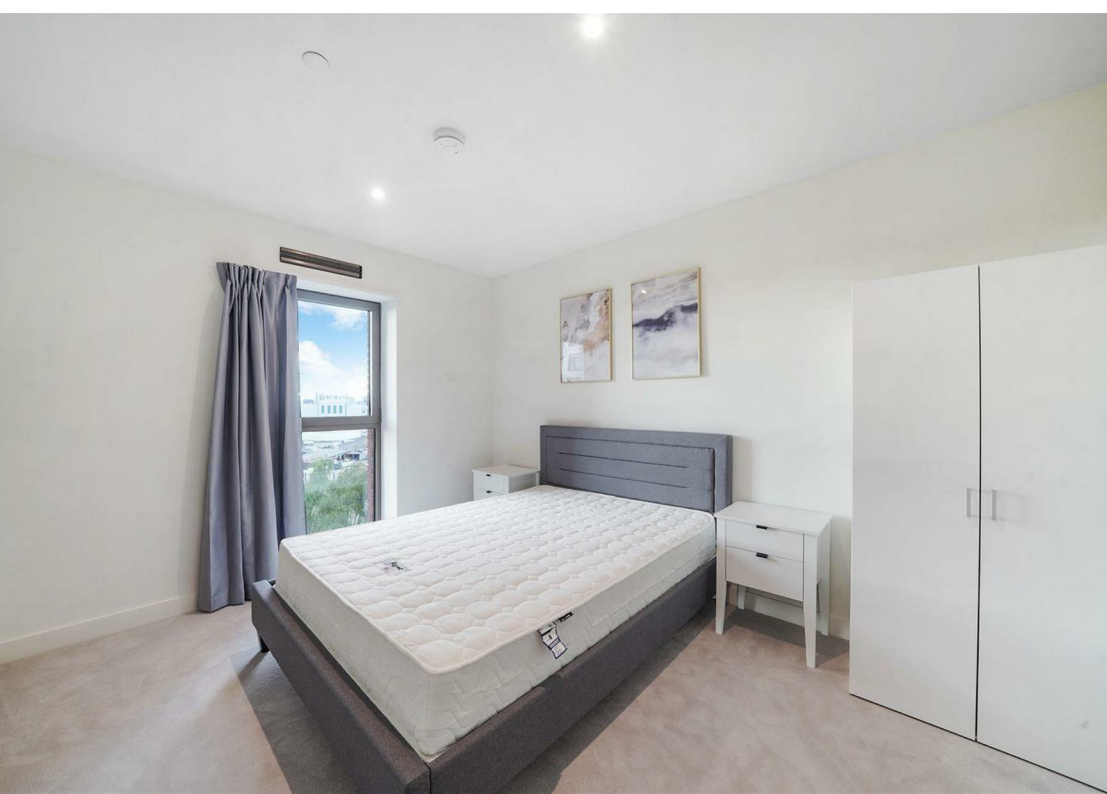
Residents will further benefit from access to amenities such as residents gym, spa and 25m pool at The Clubhouse, an outstanding Royal Wharf Primary School, Nest nursery, concierge team, 24/7 security, dentist, pharmacy, shops, a local pub and the 16th floor Sky Lounge anything you need is right on your doorstep.

Riverscape is Ballymore and Oxley's latest joint venture, a new riverfront development in the heart of the Royal Docks, adjacent to the 40-acre Royal Wharf estate. Riverscape is one of the capital's greenest and best-connected developments, located at the meeting point of the River Thames and Lyle Park, just a short walk to Crossrail.

Wide riverside promenades link the development to the Royal Wharf estate, while the Royal Wharf Pier allows residents to catch the Uber by Thames Clippers from their doorstep.

Located just moments from Royal Albert Dock business district, Riverscape's connectivity is exceptional, by road, rail, water or even air. Two DLR stations are just minutes away, with fast links to Canary Wharf, and reaching London City Airport in just three minutes. The Crossrail station Custom House is also reachable in less than 10-minutes' walk, meaning residents can reach Heathrow Airport in just 41 minutes, and the West End in 15 minutes.





IMPORTANT NOTICE - These particulars have been prepared in good faith and they are not intended to constitute part of an offer or contract. We have not performed a structural survey on this property and the services, appliances and specific fittings have not been tested. All photographs, measurements, floor plans and distances referred to are given as a guide and should not be relied upon.

A large, dark blue silhouette of a stag's head with prominent antlers, positioned on the right side of the page.

BUTLER & STAG

 **020 8102 1236**

 **508 Roman Road, Bow, London, E3 5LU**

 **bow@butlerandstag.com**

www.butlerandstag.uk