



Globe Road, London, E2

BUTLER & STAG



**Available from the 13th of May is this large 519 Sq ft one bedroom apartment with outside space and a separate kitchen in a fantastic location.**

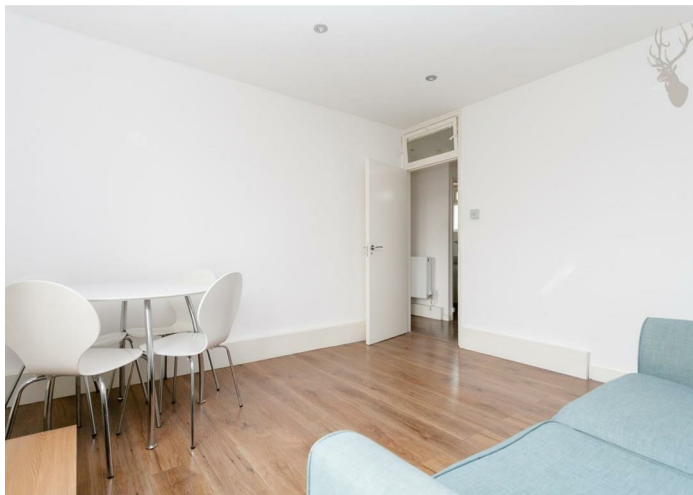


- One Double Bedroom
- Private balcony
- Fantastic location
- Walking Distance to Bethnal Green Underground
- One Bathroom
- Separate kitchen
- Furnished
- Available 13th of May

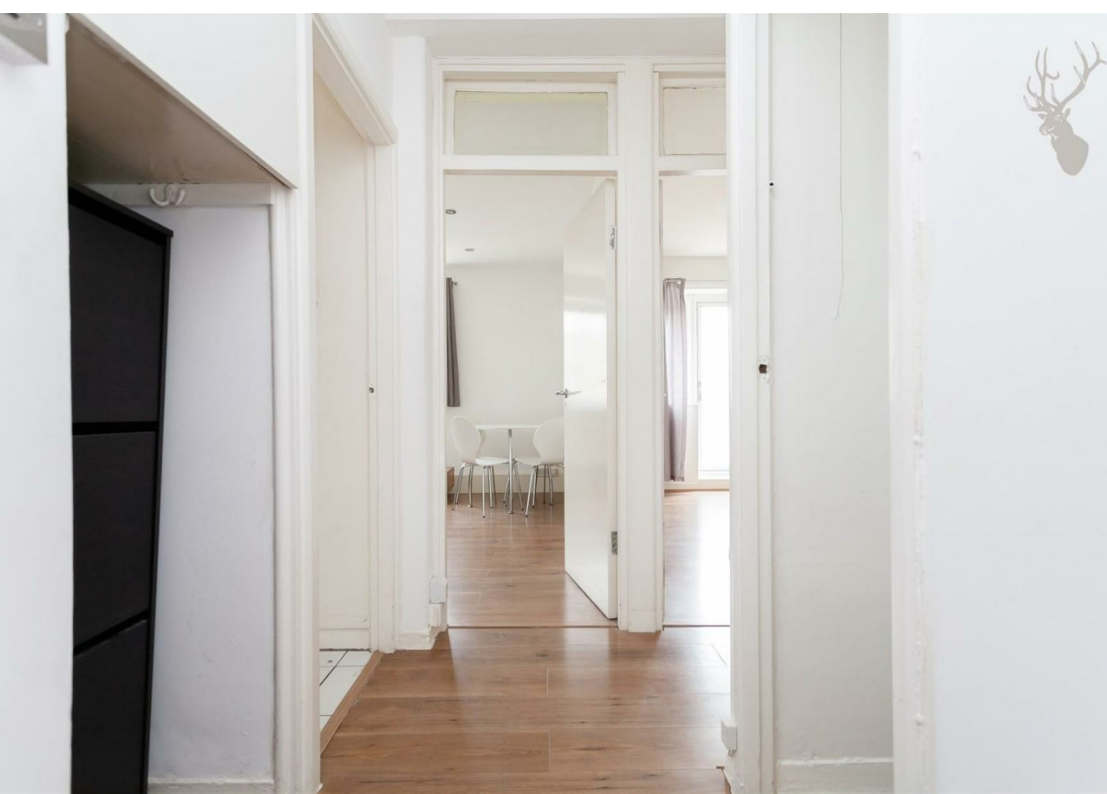
Internally the property offers a large living area with ample storage, wooden floors throughout three piece bathroom and separate kitchen with integrated appliances. The block that the property is situated in has the added benefit of a communal lift.

As well as the picturesque Regents Canal, Mile End and Victoria Parks being close by, you are also only minutes away from Roman Road, Spitalfields and Broadway Markets as well as an abundance of local amenities

Ideally located, this property is just a short walk from Bethnal Green Tube Station (Central Line), Bethnal Green Overground Station, Stepney Green and Whitechapel Tubes (District and Hammersmith & City Lines).



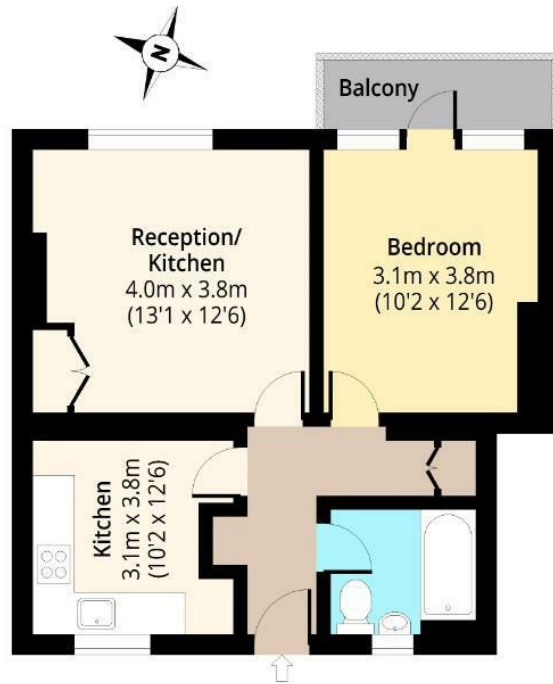




# Rogers Estate, Globe Road, E2



**Third Floor**  
Approx. 48.22 Sq. meters (519 Sq. feet)



Total area: approx.48.22 Sq. meters (519 Sq. feet) (Excluding Balcony)

Total area: approx. 49.87 Sq. meters (537 Sq. feet) (Including Balcony)

For illustration purposes only - not to scale

[www.lpaplus.com](http://www.lpaplus.com)

**BUTLER & STAG**

☎ 020 8102 1236

🏠 508 Roman Road, Bow, London, E3 5LU

✉ [bow@butlerandstag.com](mailto:bow@butlerandstag.com)

[www.butlerandstag.uk](http://www.butlerandstag.uk)

IMPORTANT NOTICE - These particulars have been prepared in good faith and they are not intended to constitute part of an offer or contract. We have not performed a structural survey on this property and the services, appliances and specific fittings have not been tested. All photographs, measurements, floor plans and distances referred to are given as a guide and should not be relied upon.