



Fuller Close, London, E2

BUTLER & STAG



## A truly stunning two bedroom modern apartment, set within this private gated development located off Cheshire Street and Brick Lane. Available furnished



- Two Bedrooms
- Oak Floors
- High Standard Finish
- Off Street Parking
- Furnished
- Brick Lane Location
- Top Floor
- Gated Development

Available now and located in one of East London's most vibrant areas is this modern two bedroom apartment.

Finished to a high standard throughout, the property boasts a large south facing open plan kitchen and living overlooking the communal gardens that incorporates oak flooring, fully fitted kitchen with quartz work surface and integrated appliances. Further comprising two good sized bedrooms, a contemporary bathroom with walk-in shower.

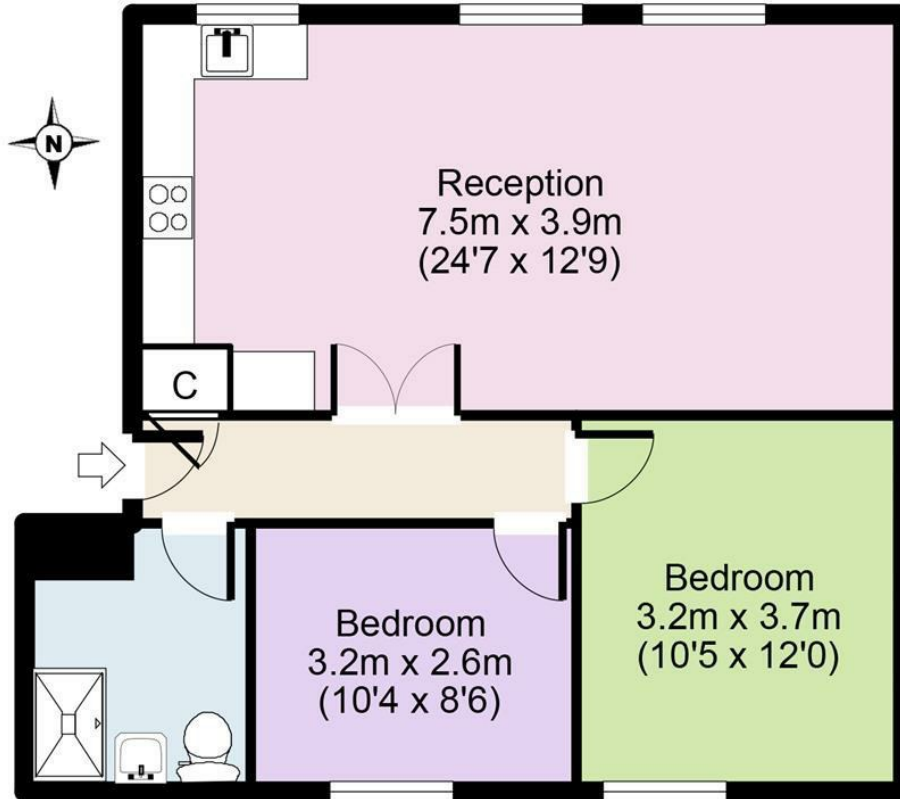
Fuller Close is located very close Brick Lane and within walking distance to fabulous Spitalfields and Columbia Road markets as well as vibrant Shoreditch and Hoxton Square. The closest stations are Shoreditch (East London Line) and Liverpool Street (Hammersmith & City, Circle, District and Central lines, British Rail).





## Second Floor

Approx. 59 sq. meters (639 sq. feet)



Total area: approx. 59 sq. meters (639 sq. feet)  
For illustration purposes only - not to scale

IMPORTANT NOTICE - These particulars have been prepared in good faith and they are not intended to constitute part of an offer or contract. We have not performed a structural survey on this property and the services, appliances and specific fittings have not been tested. All photographs, measurements, floor plans and distances referred to are given as a guide and should not be relied upon.

# BUTLER & STAG

☎ 020 8102 1236

🏠 508 Roman Road, Bow, London, E3 5LU

✉ bow@butlerandstag.com

[www.butlerandstag.uk](http://www.butlerandstag.uk)