



Rookwood Way, London, E3

BUTLER & STAG





**Price Guide £450,000 - £475,000**  
**Forming part of this vibrant canal side complex, comprising an eclectic mix of modern apartments, dynamic courtyards allowing for intimate and diverse social areas to live, work and play is this one bedroom residence.**



## Leasehold

- Dynamic Communal Courtyard Gardens
- Canal Side Setting Development
- Resident Only Gymnasium
- Ultra High Specification
- Inset Balcony
- Concierge
- Urban Living Meets Community Play Space
- Hackney Wick Station A Moments Walk Away

The open-plan layout optimizes space and functionality, seamlessly integrating the living, dining, and kitchen areas. This versatile space is ideal for both relaxing and entertaining.

The well-appointed bedroom offers a serene retreat. With plush carpeting, ample closet space, providing the perfect setting for restful nights.

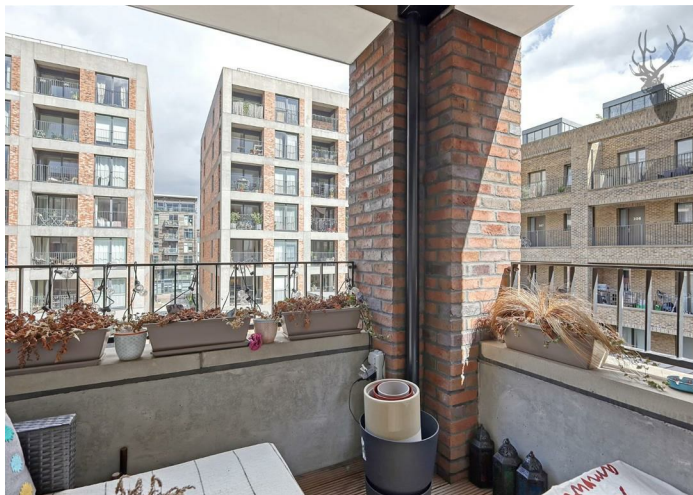
The stylish bathroom features designer fixtures, elegant tiling, and a luxurious bathtub/shower combination.

Step outside and soak up the vibrant atmosphere from your private balcony.

Fish Island Village is on the edge of Hackney Wick, which is now a thriving, cultural creative hub comprising independent cafes, bars and warehouse pop-up art galleries, this energetic neighbourhood will be a truly inspiring place to live. Ideal for both budding entrepreneurs and anyone looking to embrace the creative vibe of this hidden gem.

Building on the area's legacy, this bold vision of a village fuses traditional industrial architecture with forward-thinking design. The creation of a sustainable and supportive environment for all that live and work here is front of mind and this vision has been conceptualised in partnership with Whitemantle Court. You'll have everything you need to live, work and play with an exclusive gym with state-of-the-art-equipment, a concierge and a number of underground parking spaces.

Retail therapy's covered when dusk falls in nearby Stratford, grab a cocktail at the Print House or head to funky urban hangout Roof East. Situated on the roof of the Stratford Centre's multi-storey car park, the venue hosts regular open-air cinema







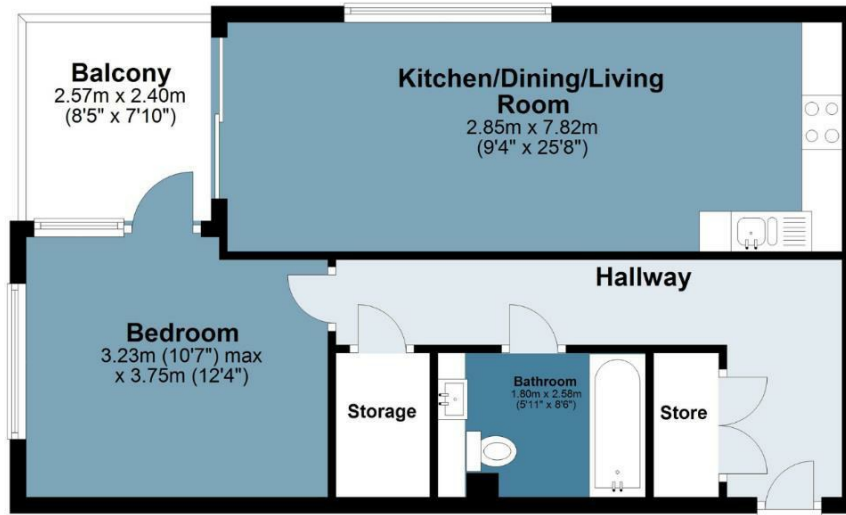
# Whitemantle Court



Approx. Gross Internal Area 55 sq. metres (592 sq. feet)

## Second Floor

Approx. 53.6 sq. metres (576.9 sq. feet)



Measurements are approximate and for illustration purposes only. While we do not doubt the accuracy and completeness, we advise you conduct a careful independent assessment of the property to determine monetary value  
© @modephotouk www.modephoto.co.uk



📞 020 8102 1236

🏠 508 Roman Road, Bow, London, E3 5LU

✉ bow@butlerandstag.com

[www.butlerandstag.uk](http://www.butlerandstag.uk)

IMPORTANT NOTICE - These particulars have been prepared in good faith and they are not intended to constitute part of an offer or contract. We have not performed a structural survey on this property and the services, appliances and specific fittings have not been tested. All photographs, measurements, floor plans and distances referred to are given as a guide and should not be relied upon.