



Shoreditch High Street, London, E1

BUTLER & STAG



**Price Guide - £425,000 -
£450,000**

High ceilings, flooded with natural light and a fantastic location are just a few of the features of this superb second floor, one bedroom conversion in the heart of Shoreditch.

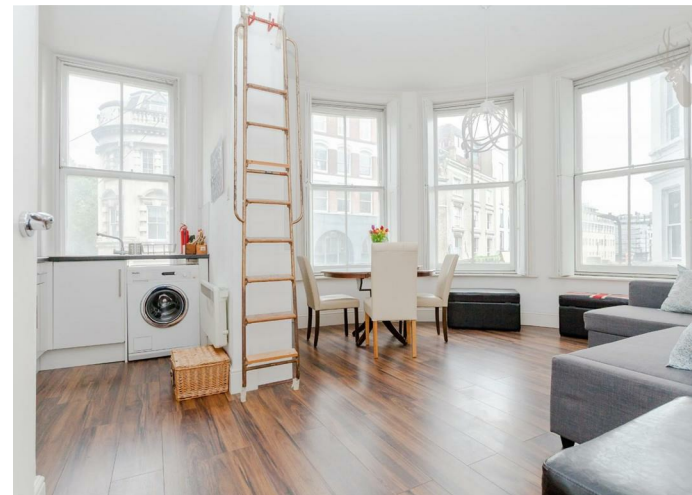


Leasehold

- High Ceilings
- Large Sash Windows
- Walking Distance To The Iconic Brick Lane and Old Spitalfields Market
- Chain Free
- Bright and Airy
- Shoreditch High Street Station A Moments Walk Away
- One Bedroom
- Open Plan Concept Living Area

Situated on the first floor of an imposing Victorian residence on the corner of Shoreditch High Street and vibrant Rivington Street, the property boasts a bright reception with a number of large sash windows, semi open plan modern kitchen, contemporary bathroom and a generous double bedroom.

Whether it be a first time residential purchase or a buy to let investment, this property is conveniently located for easy access to the City and moments from the wealth of fashion boutiques, cafes, bars and award winning restaurants of Shoreditch, Brick Lane and Hoxton Square. This property is also in close proximity to excellent transport links including Shoreditch High Street Station (Overground), Old Street Station (Northern Line) and Liverpool Street Station (Metropolitan, Central, Hammersmith & City and Circle lines, National Rail).





Shoreditch High Street, EC1

Approx. Gross Internal Area 463 Sq Ft - 43.01 Sq M

BUTLER & STAG



Second Floor

Floor Area 463 Sq Ft - 43.01 Sq M

Floor plan is for illustrative purposes only and is not to scale. Every attempt has been made to ensure the accuracy of the floor plan shown, however all measurements, fixtures, fittings and data shown are an approximate interpretation for illustrative purposes only.
lpaplus.com

BUTLER & STAG

☎ 020 8102 1236

🏠 508 Roman Road, Bow, London, E3 5LU

✉ bow@butlerandstag.com

www.butlerandstag.uk

IMPORTANT NOTICE - These particulars have been prepared in good faith and they are not intended to constitute part of an offer or contract. We have not performed a structural survey on this property and the services, appliances and specific fittings have not been tested. All photographs, measurements, floor plans and distances referred to are given as a guide and should not be relied upon.