



3 Yeo Street, London, E3

BUTLER  STAG



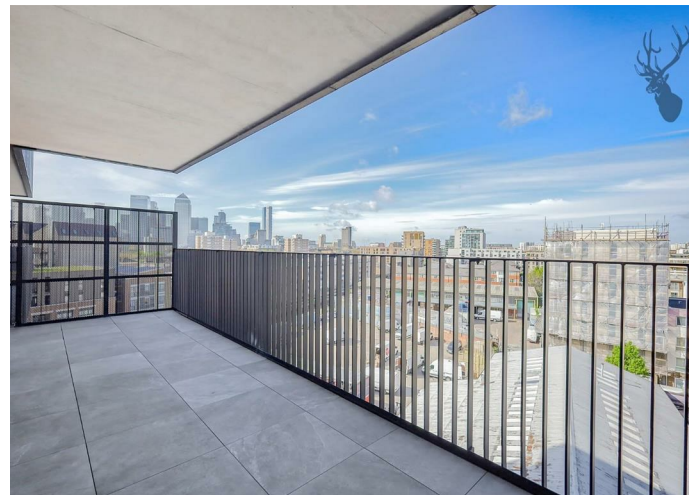
**Located within a brand new development is this light spacious two bedroom, two bathroom modern apartment available now.**



- New Development
- Private Balcony
- Fully Fitted Kitchen
- Secure Entry Phone System
- Unfurnished
- Two Double Bedrooms
- Two Modern Bathrooms
- Four Communal Terraces
- Available Now
- Close to Transport and Amenities

Coming to the first time to the market is this brand new apartment, located in a new development and offering all modern features including four communal terraces.

The property comprises of two light and spacious double bedrooms, a fully fitted kitchen with integrated appliances, two modern functional bathrooms, private large balcony with views over to Canary Wharf and a choice of four communal terraces. Situated with easy reach of local transport, Tesco and amenities.

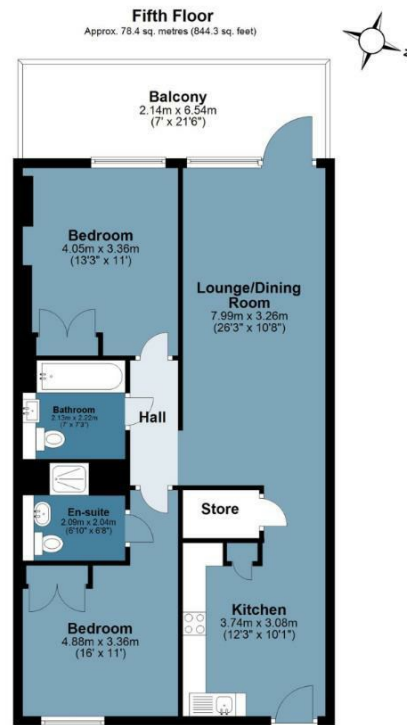




## Waters Edge Court

Approx. Gross Internal Area 78.4 sq. metres (844.3 sq. feet)

**BUTLER & STAG**



Measurements are approximate and for illustration purposes only. While we do not doubt the accuracy and completeness, we advise you conduct a careful independent assessment of the property to determine monetary value  
© @modephotouk www.modephoto.co.uk

**BUTLER & STAG**

☎ 020 8102 1236

🏠 508 Roman Road, Bow, London, E3 5LU

✉ bow@butlerandstag.com

IMPORTANT NOTICE - These particulars have been prepared in good faith and they are not intended to constitute part of an offer or contract. We have not performed a structural survey on this property and the services, appliances and specific fittings have not been tested. All photographs, measurements, floor plans and distances referred to are given as a guide and should not be relied upon.

[www.butlerandstag.uk](http://www.butlerandstag.uk)