



9, Goodluck Hope Walk, London, E14

BUTLER  STAG



Located in one of Docklands premier developments and offering views over the river and the city this modern apartment is available furnished and ready to move in now.



- Two Bedroom
- Two Bathrooms
- Available 23rd March
- Furnshed
- Canning Town Station 0.3 Miles
- 24 Hour Concierge
- Residents Gym
- Sauna Room
- Cinema Room
- Close to Canary Wharf

Offered to the market is this light and spacious two-bedroom apartment in the Goodluck Hope development by Ballymore located in E14.

The apartment comprises of a contemporary fully fitted kitchen with an open plan and light living area, benefiting from two spacious bedrooms and two modern contemporary bathrooms.

Residents will benefit from the full use of all Goodluck Hope amenities including a state-of-the-art gym, cinema room, indoor and outdoor swimming pools, and residents' lounge.

Living In this modern apartment you can easily explore the city, and every part of the development is designed for people to work, live, and relax.





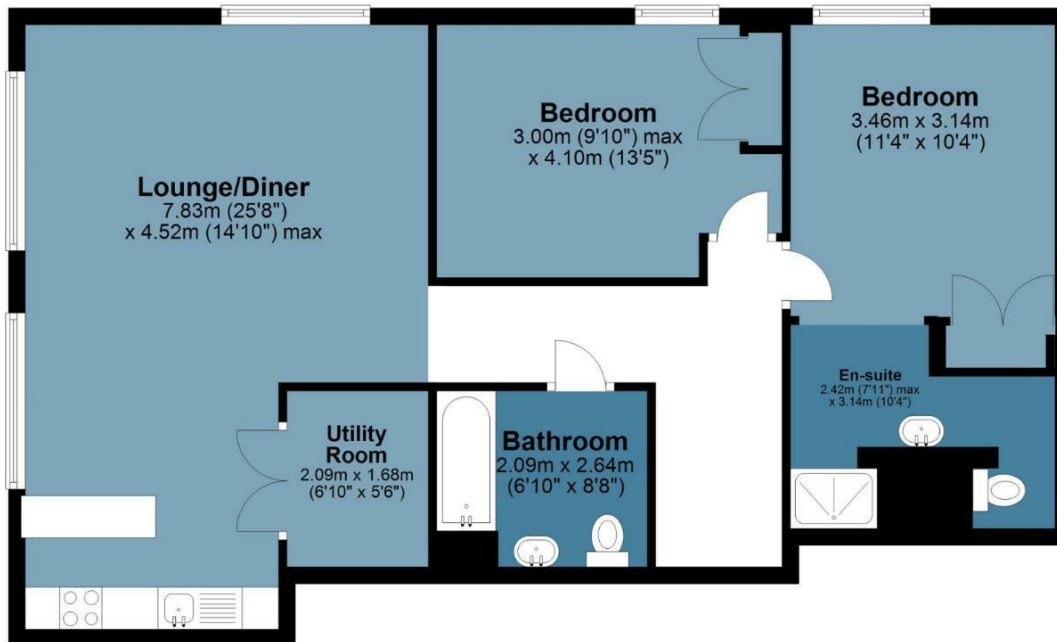
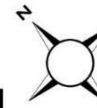
Douglass Tower

Approx. Gross Internal Area 77.7 sq. metres (836.3 sq. feet)

BUTLER & STAG

First Floor

Approx. 77.7 sq. metres (836.3 sq. feet)



Measurements are approximate and for illustration purposes only. While we do not doubt the accuracy and completeness, we advise you conduct a careful independent assessment of the property to determine monetary value
© @modephotouk www.modephoto.co.uk

BUTLER & STAG

☎ 020 8102 1236

🏠 508 Roman Road, Bow, London, E3 5LU

✉ bow@butlerandstag.com

IMPORTANT NOTICE - These particulars have been prepared in good faith and they are not intended to constitute part of an offer or contract. We have not performed a structural survey on this property and the services, appliances and specific fittings have not been tested. All photographs, measurements, floor plans and distances referred to are given as a guide and should not be relied upon.

www.butlerandstag.uk