



Palmers Road, London, E2

BUTLER & STAG



**Welcome to Caesar Court, where contemporary living meets the vibrant energy of Bethnal Green. This smartly presented two-bedroom apartment offers the perfect blend of style, comfort, and convenience, ideal for both professionals or buy to let investors seeking a prime London residence.**



## Leasehold

- Roof Terrace
- Fully-Equipped Modern Kitchen
- Spacious Bedrooms with Ample Storage
- Stylish Bathroom
- Secure Entry System
- Chain Free
- First Floor Apartment
- Restaurants, Cafes, and Bars within Walking Distance

Upon entering, you're greeted by a spacious living area designed for relaxation and entertainment. The apartment boasts large windows that flood the space with natural light, creating an inviting ambiance throughout the day. The separate modern kitchen features sleek countertops, high-quality appliances, and ample storage.

The two well-appointed bedrooms provide a peaceful retreat, each offering cozy atmospheres and generous space.

Nestled in the heart of Bethnal Green, Caesar Court offers unrivaled access to everything this vibrant neighborhood has to offer. Explore the eclectic mix of trendy cafes, restaurants, and bars lining the streets, or take a leisurely stroll through nearby parks for a breath of fresh air.

Commuting is a breeze with excellent transport links, including Bethnal Green Underground Station just a short walk away, providing easy access to central London and beyond. For those who prefer cycling, dedicated bike lanes make navigating the city a breeze.





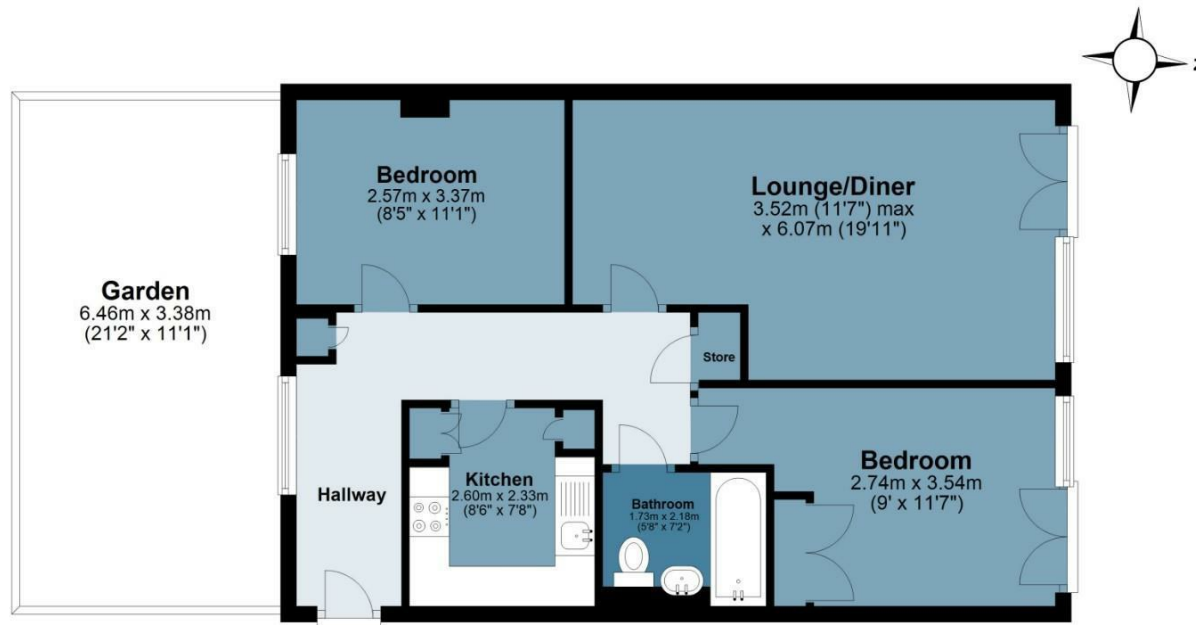
## Caesar Court

Approx. Gross Internal Area 61 Sq M ( 657 Sq Ft )

BUTLER & STAG

### First Floor

Approx. 61.0 sq. metres (657.0 sq. feet)



Measurements are approximate and for illustration purposes only. While we do not doubt the accuracy and completeness, we advise you conduct a careful independent assessment of the property to determine monetary value.

© @modephoto.uk www.modephoto.co.uk

BUTLER & STAG

☎ 020 8102 1236

🏠 508 Roman Road, Bow, London, E3 5LU

✉ bow@butlerandstag.com

IMPORTANT NOTICE - These particulars have been prepared in good faith and they are not intended to constitute part of an offer or contract. We have not performed a structural survey on this property and the services, appliances and specific fittings have not been tested. All photographs, measurements, floor plans and distances referred to are given as a guide and should not be relied upon.

www.butlerandstag.uk